

GESI art for chefs

PRICE LIST
NORTH AMERICA



INDEX

GESI art for chefs

PRICE LIST
NORTH AMERICA
22



35

- 21** GESSI 316
- 31** OFFICINE GESSI
- 35** PROTON
- 41** OXYGENE

- PILLAR TAPS **45**
- SOAP DISPENSER **47**
- TECHNICAL ACCESSORIES **49**



41

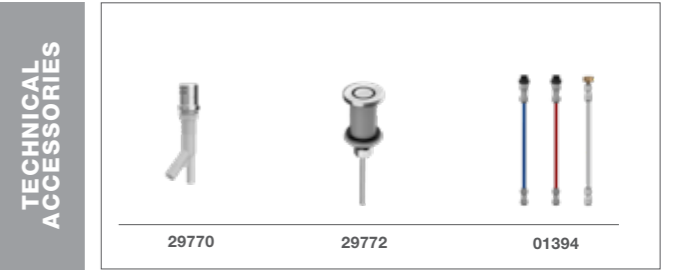


21



31

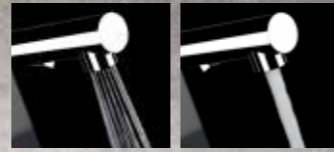
Item	Pag	Semi-Professional	Pull-Down	Pull-Down Prep	Instant Hot/Filtered Water	Cold Water Only	Soap/Lotion Dispenser	Air Switch	Air Gap	Boiler Connection KIT	Chrome	Finox	Steel Brushed	Matte Black	Copper Brushed PVD	Black Metal Brushed PVD	Warm Bronze Brushed PVD	Brass Brushed PVD
											#031	#149	#239	#299	#708	#707	#726	#727
GESI316	60120	21	•									•	•	•	•	•	•	•
GESI316	60220	23	•									•	•	•	•	•	•	•
GESI316	60024	25		•								•	•	•	•	•	•	•
GESI316	60124	25			•							•	•	•	•	•	•	•
GESI316	60548	27			•							•	•	•	•	•	•	•
GESI316	60546	29			•							•	•	•	•	•	•	•
OFFICINE	60058	31									•	•	•					
OFFICINE	60060	31		•	•						•	•	•					
OFFICINE	60544	33			•						•	•	•					
PROTON	17194	35	•								•	•	•					
PROTON	17156	37		•							•	•	•					
PROTON	17158	37			•						•	•	•					
PROTON	60540	39			•						•	•	•					
OXYGENE	37293	41		•							•	•						
OXYGENE	37231	43		•							•	•						
PILLAR TAPS	00915	45			•						•	•	•					
SOAP DISPENSER	29660	47				•					•	•	•	•	•	•	•	•
SOAP DISPENSER	29651	47				•					•	•	•					
SOAP DISPENSER	29654	47				•					•	•	•					
TECHNICAL ACCESSORIES	29770	49						•			•	•	•	•	•	•	•	•
TECHNICAL ACCESSORIES	29772	49					•				•	•	•	•	•	•	•	•
TECHNICAL ACCESSORIES	01394	49						•			•	•	•					



AT A GLANCE

EXTRACTIBLE HANDSHOWER

Pull out hand shower provides the greatest freedom of movement. Press the button to switch from the softer aerated flow to the forceful jet spray. The hand shower mixers (single and double jet) are equipped with specially designed components that minimize limestone deposits and also includes a non-return check valve.



TYPE OF SPRAY



GESSI SHINE SURFACE

The special Gessi plating process ensures surfaces are resistant to stains guaranteeing a long lasting and durable sheen to your finish.



SWIVELLING SPOUT

All kitchen mixers offer the possibility of orientation of the spout, up to a total freedom of movement at 360°.

ROTATION ANGLE



CARTRIDGES

All mixers contain ceramic disk cartridge and are tested to 70,000 opening/closing movements, this corresponds to 10 years of use by an average family of 4. In the tests performed by Gessi the cartridges failed after 200,000 opening and closing movements using medium/hard water.

A sample "hammer test" is performed, which consist of the rapid opening of the mixer which exposes the cartridge to a sudden shock caused by the water pressure. The test is classified as a pass when the cartridge still operates when opened at a water pressure of up to 50 bar.



Ø CARTRIDGE



Ø HOLE SIZE

FINISHINGS



031
Chrome



149
Finox Brushed
Nickel



239
Steel Brushed



299
Matte Black



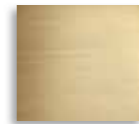
708
Copper Brushed



707
Black Metal
Brushed



726
Warm Bronze
Brushed



727
Brass Brushed



Gessi The Green Company.

Gessi belongs to its territory and since its inception has a mission to respect it. The factory, surrounded by 800.000smq of park, features high-efficiency lighting, ventilated eco-thermal panel systems, water recycling system, 4 hectares of photovoltaic panels that produce clean energy fuelling the workshop, avoiding any CO2 from emission.



A company of passionate people.

Gessi started as a small artisanal shop, and despite the rapid growth, always stays true to its primary values. Every employee has a strong sense of belonging and respect towards the company: this passionate spirit relates to everyone who takes part to the Gessi Family. Maximum care is reserved to all stakeholders: the continuous investment in welfare is a key success factor for Gessi.

A Family Story.

The company is a family story, born in 1992 from the genius of founders Umberto Gessi and his son Gian Luca, who believed in the mission of bringing a sense of private wellness through products with unprecedented technological innovation and iconic design style. In the recent times, Nicolò and Emanuele joined the family, who now comprises over 650 employees worldwide.





The Gessi integrated quality and environmental management system is a guarantee of quality: our unique production method is certified UNI EN ISO 9001 since 1996.

100% of our production undergoes over decades of quality controls before being shipped to our customers, to ensure we deliver only the best.

We strive for maximum excellence, that is why our portfolio achieved conformity certificates from the world's most renowned certification bodies. 100% of our kitchen portfolio is certifiable DVGW, hence perfectly suitable for the German market.

Product quality and European production guarantee.



Gessi operates ethically from the perspectives of quality, safety and environment. By using advanced technologies and by creating innovative processes in compliance with its own strict policies and often beyond the regulatory requirements, Gessi affirms every day its own goal to protect the environment, produced products of incomparable quality, and promote a healthy workplace.



Technology and Innovation.

Gessi believes in continuous improvement, that is why the company invests in R&D over 10% of our profits every year to fuel technological innovation and upgrade our factory. We have an internal team of 25 people working on product R&D, new materials, process innovation, certifications and quality improvement

100% made in Gessi.

Gessi maintains strong roots in its home territory and carries out each production phase in-house, ensuring 100% of its product components are made in Europe. The Company boasts high levels standards of technology, ensuring the highest standards of product quality.



Best service before and after the sale.

Gessi operates in the market with a team of employees who are always ready to satisfy all the needs of our customers.

The company owns a high-bay automatic warehouse with a capacity of more than 100,000 m³, which enables our staff to ensure fast deliveries.

Gessi offers its service after the sale in all parts of world and guarantees a fast technical assistance.



Gessi style available worldwide.



- Canada
- USA
- Latino America
- Spain
- UK
- France
- Benelux
- Germany
- Austria
- Switzerland
- Italy
- Ukraine
- MEA
- Russia
- India
- China
- Hongkong
- Thailand
- Singapore
- Australia



Casa Gessi worldwide.

Innovative concept stores in which the Gessi philosophy, emotion and style can be experienced

Gessi Milano
Via Manzoni 16A
20121 Milan - Italy

Boutique Gessi Dubai
7 2a St - Al Quoz
Sheikh Zayed Road
Dubai, EAU

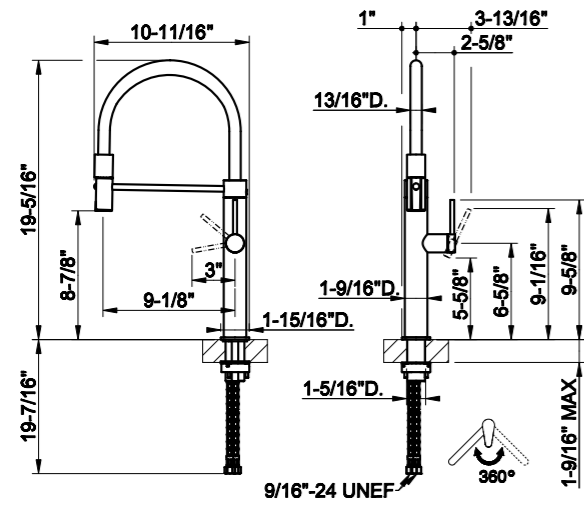
Casa Gessi Singapore
165 Penang Road
238465 Singapore

Casa Gessi London
Old Sessions House
4 Farringdon Ln
EC1R 0DU London – UK



GESSart for chefs

316 KITCHEN FLESSA



60120

Semi-professional sink mixer

- Black flexible hose
- Spout projection 9-1/8"
- Height 19-5/16"
- Two-function Spray
- Hole for installation 1-5/16" D.
- Spout swivels 360°
- Drain not included
- Max flow rate 1.75 GPM
- ADA compliant
- Optional custom color hose to be purchased separately and to be installed on site

60120	239	Steel Brushed	2,000
60120	707	Black Metal Brushed	3,760
60120	708	Copper Brushed	3,760
60120	726	Warm Bronze Brushed	3,760
60120	727	Brass Brushed	3,760
60120	299	Matte Black	2,700

SP01791	852	Gray RAL 7006	250
SP01791	853	Orange RAL 2009	250
SP01791	855	White RAL 9010	250

ART FOR CHEFS



FLEXIBLE

SP01791#854

CUSTOM OPTIONS

SP01791#855

SP01791#852

SP01791#853



#707 BLACK METAL BRUSHED

#239 STEEL BRUSHED

#299 MATTE BLACK

#727 BRASS BRUSHED

#708 COPPER BRUSHED

#726 WARM BRONZE BRUSHED

316 KITCHEN MECCANICA



FLEXIBLE

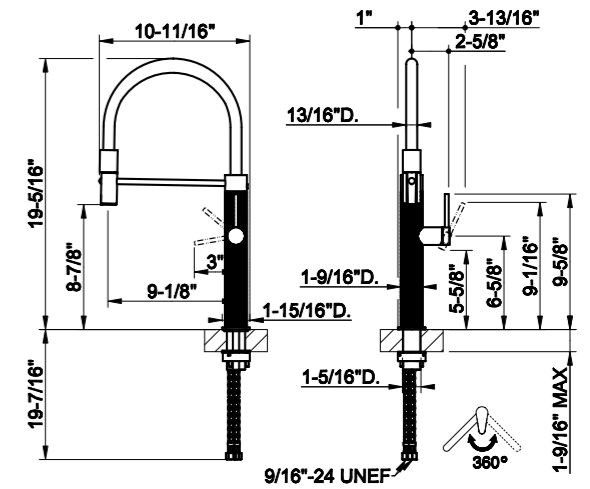
SP01791#854

CUSTOM OPTIONS

SP01791#855

SP01791#852

SP01791#853



60220

Semi-professional sink mixer

- Black flexible hose
- Spout projection 9-1/8"
- Height 19-5/16"
- Two-function Spray
- Hole for installation 1-5/16" D.
- Spout swivels 360°
- Drain not included
- Max flow rate 1.75 GPM
- ADA compliant
- Optional custom color hose to be purchased separately and to be installed on site

60220	239	Steel Brushed	2,100
60220	707	Black Metal Brushed	3,950
60220	708	Copper Brushed	3,950
60220	726	Warm Bronze Brushed	3,950
60220	727	Brass Brushed	3,950
60220	299	Matte Black	2,835

SP01791	852	Gray RAL 7006	250
SP01791	853	Orange RAL 2009	250
SP01791	855	White RAL 9010	250



#707 BLACK METAL BRUSHED

#239 STEEL BRUSHED

#299 MATTE BLACK

#727 BRASS BRUSHED

#708 COPPER BRUSHED

#726 WARM BRONZE BRUSHED

KITCHEN MECCANICA
316



#707 BLACK METAL BRUSHED



#239 STEEL BRUSHED



#299 MATTE BLACK



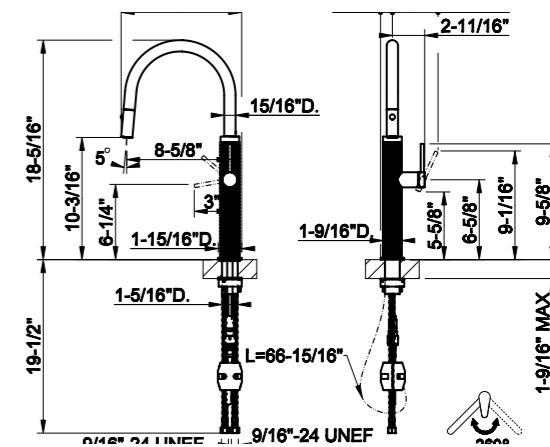
#727 BRASS BRUSHED



#708 COPPER BRUSHED



#726 WARM BRONZE BRUSHED

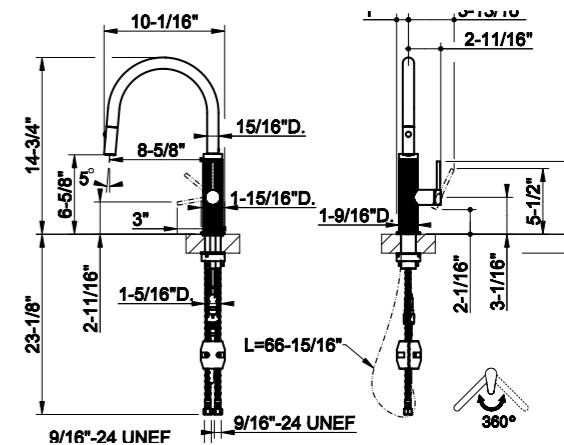


60024

Pull-Down Sink mixer

- Spout projection 8-5/8"
- Height 18-5/16"
- Two-function Spray
- Hole for installation 1-5/16" D.
- Spout swivels 360°
- Drain not included
- Max flow rate 1.75 GPM
- ADA compliant

60024	239	Steel Brushed	1,950
60024	707	Black Metal Brushed	3,670
60024	708	Copper Brushed	3,670
60024	726	Warm Bronze Brushed	3,670
60024	727	Brass Brushed	3,670
60024	299	Matte Black	2,635



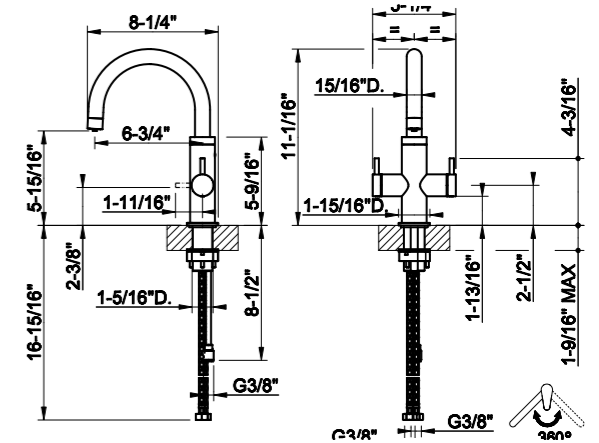
60124

Pull-Down Prep Sink mixer

- Spout projection 8-5/8"
- Height 14-3/4"
- Two-function Spray
- Hole for installation 1-5/16" D.
- Spout swivels 360°
- Drain not included
- Max flow rate 1.75 GPM
- ADA compliant

60124	239	Steel Brushed	1,855
60124	707	Black Metal Brushed	3,485
60124	708	Copper Brushed	3,485
60124	726	Warm Bronze Brushed	3,485
60124	727	Brass Brushed	3,485
60124	299	Matte Black	2,500

316 KITCHEN FLESSA



60548

Instant Hot/Filtered Water sink mixer

- Spout projection 6-3/4"
- Height 11-1/16"
- Hole for installation 1-5/16" D.
- Spout swivels 360°
- Drain not included
- Requires boiler connection KIT 01394

Engineered to function with MT641-3 MOUNTAIN "Little Gourmet" Instant Hot Water Tank Tank and filter must be purchased separately and are not available from the Gessi Company

60548	239	Steel Brushed	2,015
60548	707	Black Metal Brushed	3,970
60548	708	Copper Brushed	3,970
60548	726	Warm Bronze Brushed	3,970
60548	727	Brass Brushed	3,970
60548	299	Matte Black	2,790

01394

Boiler Connection KIT REQUIRED
Engineered to function with MT641-3 MOUNTAIN "Little Gourmet" Instant Hot Water Tank Tank and filter must be purchased separately and are not available from the Gessi Company.

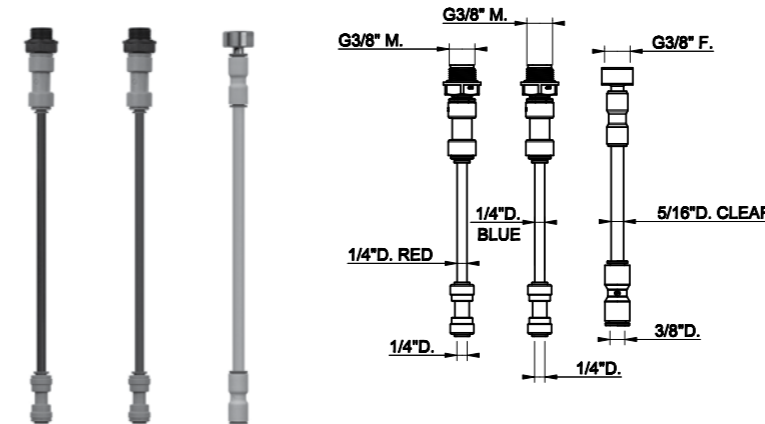
- Connection Tubing:
- Supply - 1/4" Blue x48"
- To Hot Tank Inlet - 1/4" Red x36"
- To Hot Tank Outlet - 3/8" Clear x36"

01394	031	Chrome	300
-------	-----	--------	-----

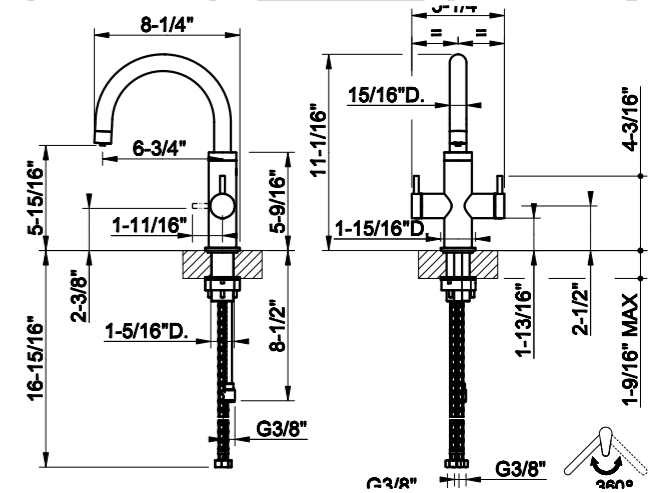


#707 BLACK METAL BRUSHED #239 STEEL BRUSHED #299 MATTE BLACK #727 BRASS BRUSHED #708 COPPER BRUSHED #726 WARM BRONZE BRUSHED

ART FOR CHEFS



316 KITCHEN MECCANICA



60546

Instant Hot/Filtered Water sink mixer

- Spout projection 6-3/4"
- Height 11-1/16"
- Hole for installation 1-5/16" D.
- Spout swivels 360°
- Drain not included
- Requires boiler connection KIT 01394

Engineered to function with MT641-3 MOUNTAIN "Little Gourmet" Instant Hot Water Tank Tank and filter must be purchased separately and are not available from the Gessi Company

60546	239	Steel Brushed	2,130
60546	707	Black Metal Brushed	4,190
60546	708	Copper Brushed	4,190
60546	726	Warm Bronze Brushed	4,190
60546	727	Brass Brushed	4,190
60546	299	Matte Black	2,950

01394

Boiler Connection KIT REQUIRED
Engineered to function with MT641-3 MOUNTAIN "Little Gourmet" Instant Hot Water Tank Tank and filter must be purchased separately and are not available from the Gessi Company.

- Connection Tubing:
- Supply - 1/4" Blue x48"
- To Hot Tank Inlet - 1/4" Red x36"
- To Hot Tank Outlet - 3/8" Clear x36"

01394 031 Chrome

300

#707 BLACK METAL BRUSHED

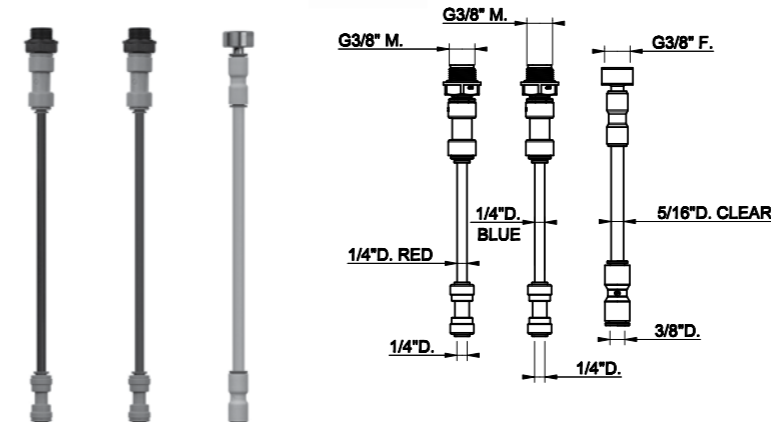
#239 STEEL BRUSHED

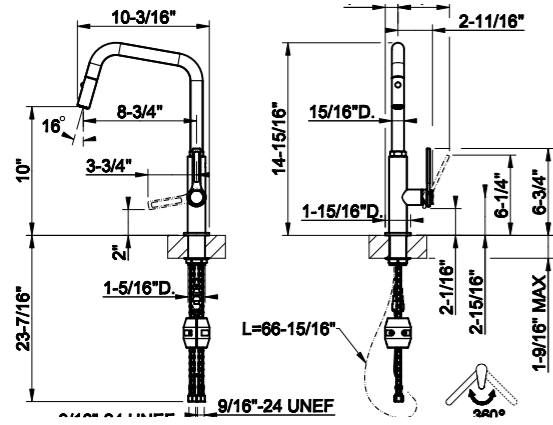
#299 MATTE BLACK

#727 BRASS BRUSHED

#708 COPPER BRUSHED

#726 WARM BRONZE BRUSHED



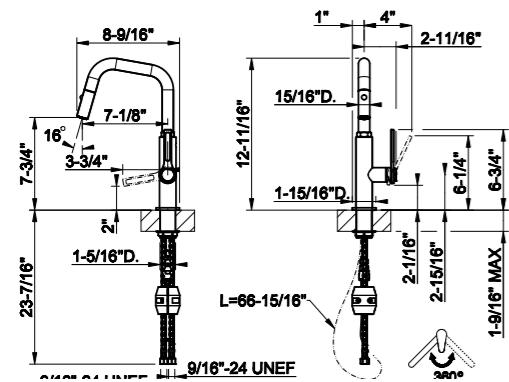


60058

Pull-Down Sink mixer

- Spout projection 8-3/4"
- Height 14-15/16"
- Two-function Spray
- Hole for installation 1-5/16" D.
- Spout swivels 360°
- Drain not included
- Max flow rate 1.75 GPM
- ADA compliant

60058	031	Chrome	945
60058	149	Finox Brushed Nickel	1,275
60058	299	Matte Black	1,275



60060

Pull-Down Prep Sink mixer

- Spout projection 7-1/8"
- Height 12-11/16"
- Two-function Spray
- Hole for installation 1-5/16" D.
- Spout swivels 360°
- Drain not included
- Max flow rate 1.75 GPM
- ADA compliant

60060	031	Chrome	900
60060	149	Finox Brushed Nickel	1,215
60060	299	Matte Black	1,215



OFFICINE - GESSI



#031 CHROME

#149 FINOX BRUSHED NICKEL

#299 MATTE BLACK

OFFICINE - GESSI



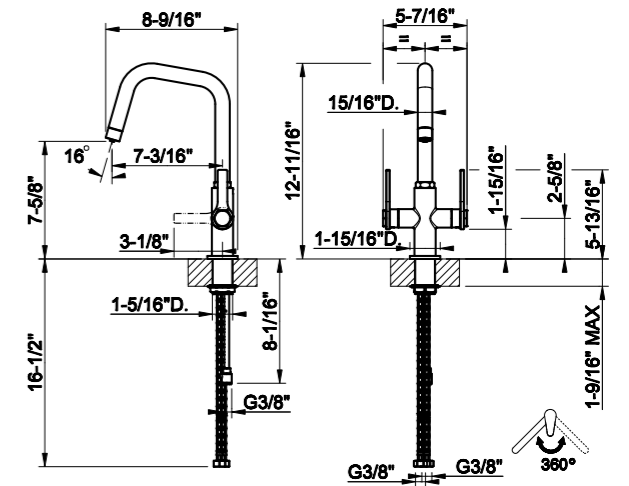
#031 CHROME



#149 FINOX BRUSHED NICKEL



#299 MATTE BLACK



60544

Instant Hot/Filtered Water sink mixer

- Spout projection 7-3/16"
- Height 12-11/16"
- Hole for installation 1-5/16" D.
- Spout swivels 360°
- Drain not included
- Requires boiler connection KIT 01394
- ADA compliant

Engineered to function with MT641-3 MOUNTAIN "Little Gourmet" Instant Hot Water Tank and filter must be purchased separately and are not available from the Gessi Company

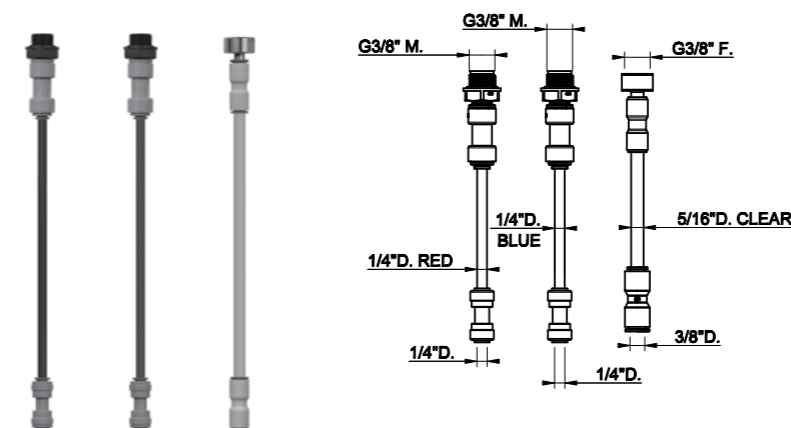
60544	031	Chrome	925
60544	149	Finox Brushed Nickel	1,320
60544	299	Matte Black	1,320

01394

Boiler Connection KIT REQUIRED
Engineered to function with MT641-3 MOUNTAIN "Little Gourmet" Instant Hot Water Tank and filter must be purchased separately and are not available from the Gessi Company.

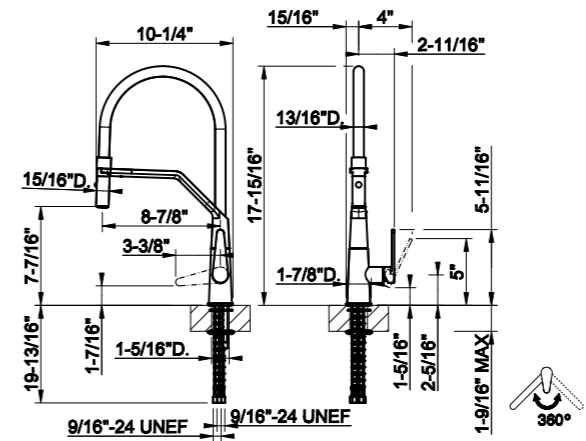
- Connection Tubing:
- Supply - 1/4" Blue x48"
- To Hot Tank Inlet - 1/4" Red x36"
- To Hot Tank Outlet - 3/8" Clear x36"

01394	031	Chrome	300
-------	-----	--------	-----



PROTON

COLLECTION



17194

Semi-professional sink mixer

- Spout projection 8-7/8"
- Height 17-15/16"
- Two-function Spray
- Hole for installation 1-5/16" D.
- Spout swivels 360°
- Drain not included
- Max flow rate 1.75 GPM
- ADA compliant

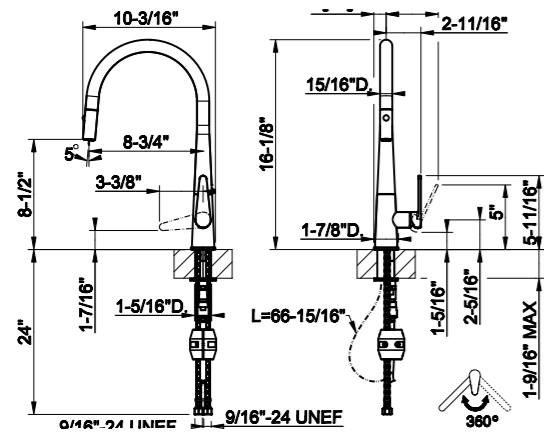
17194	031	Chrome	900
17194	149	Finox Brushed Nickel	1,215
17194	299	Matte Black	1,215



#031 CHROME

#149 FINOX BRUSHED NICKEL

#299 MATTE BLACK

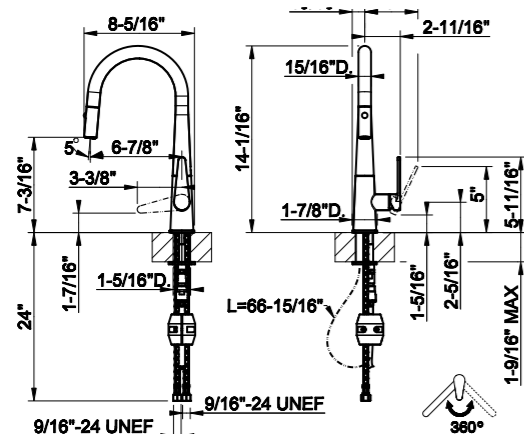


17156

Pull-Down Sink mixer

- Spout projection 8-3/4"
- Height 16-1/8"
- Two-function Spray
- Hole for installation 1-5/16" D.
- Spout swivels 360°
- Drain not included
- Max flow rate 1.75 GPM
- ADA compliant

17156	031	Chrome	905
17156	149	Finox Brushed Nickel	1,220
17156	299	Matte Black	1,220



17158

Pull-Down Prep Sink mixer

- Spout projection 6-7/8"
- Height 14-1/16"
- Two-function Spray
- Hole for installation 1-5/16" D.
- Spout swivels 360°
- Drain not included
- Max flow rate 1.75 GPM
- ADA compliant

17158	031	Chrome	860
17158	149	Finox Brushed Nickel	1,160
17158	299	Matte Black	1,160



ART
FOR
CHEFS

Soft shape
for a linear
design



#031 CHROME



#149 FINOX BRUSHED NICKEL

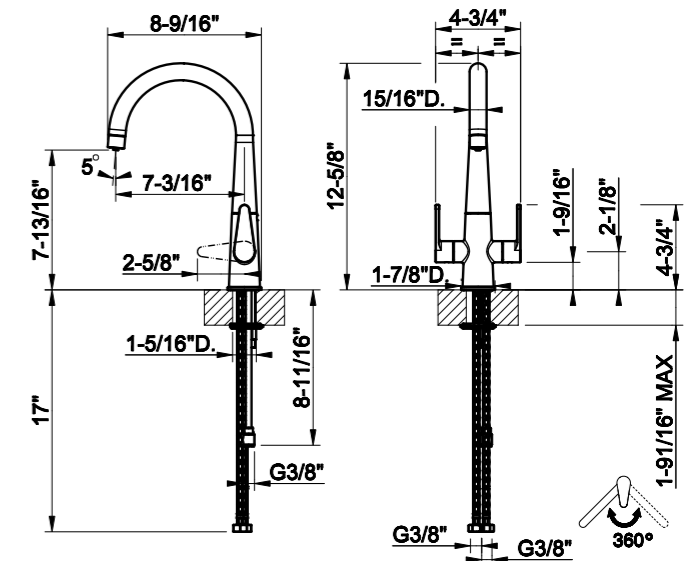


#299 MATTE BLACK

PROTON COLLECTION



#031 CHROME #149 FINOX BRUSHED NICKEL #299 MATTE BLACK



60540

Instant Hot/Filtered Water sink mixer

- Spout projection 7-3/16"
- Height 12-5/8"
- Hole for installation 1-5/16" D.
- Spout swivels 360°
- Drain not included
- Requires boiler connection KIT 01394
- ADA compliant

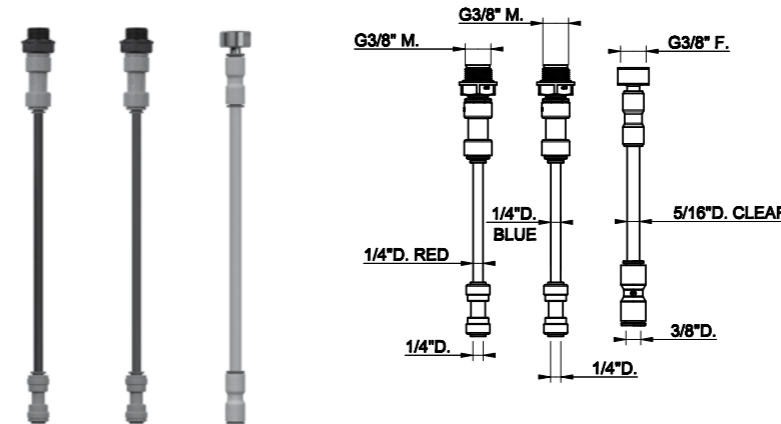
Engineered to function with MT641-3 MOUNTAIN "Little Gourmet" Instant Hot Water Tank Tank and filter must be purchased separately and are not available from the Gessi Company

60540	031	Chrome	875
60540	149	Finnox Brushed Nickel	1,255
60540	299	Matte Black	1,255

01394

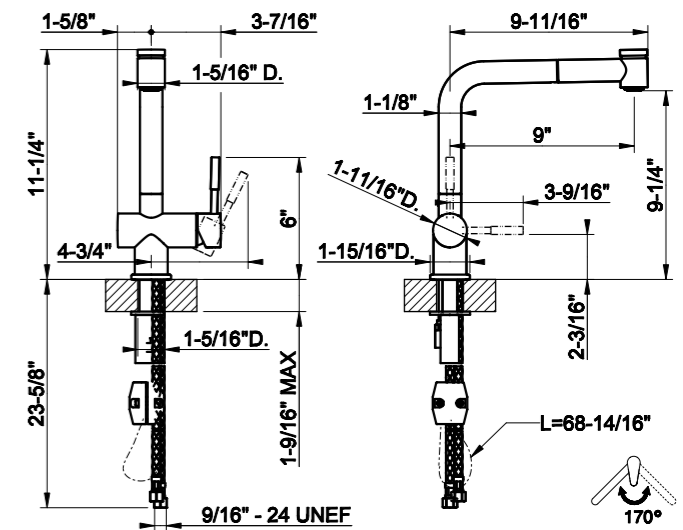
Boiler Connection KIT REQUIRED
Engineered to function with MT641-3 MOUNTAIN "Little Gourmet" Instant Hot Water Tank Tank and filter must be purchased separately and are not available from the Gessi Company.

- Connection Tubing:
- Supply - 1/4" Blue x48"
- To Hot Tank Inlet - 1/4" Red x36"
- To Hot Tank Outlet - 3/8" Clear x36"



01394	031	Chrome	300
-------	-----	--------	-----

OXYGENE COLLECTION



37293

- Pull-Down Sink mixer
- Spout projection 9"
 - Height 11-1/4"
 - Two-function Spray
 - Hole for installation 1-5/16" D.
 - Spout swivels 170°
 - Drain not included
 - Max flow rate 1.75 GPM
 - ADA compliant

37293	031	Chrome	844
37293	149	Finnox Brushed Nickel	1,086



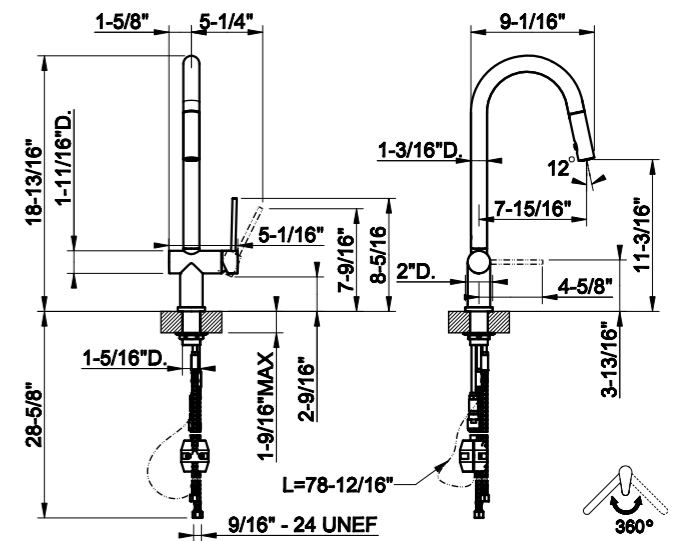
#031 CHROME



#149 FINNOX BRUSHED NICKEL

OXYGENE

COLLECTION



37231

- Pull-Down Sink mixer
- Spout projection 7-15/16"
 - Height 18-13/16"
 - Two-function Spray
 - Hole for installation 1-5/8" D.
 - Spout swivels 360°
 - Drain not included
 - Max flow rate 1.75 GPM
 - ADA compliant

37231	031 Chrome	1,329
37231	149 Finox Brushed Nickel	1,730

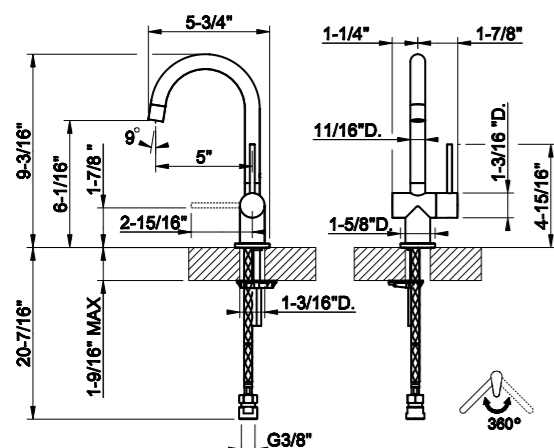


#031 CHROME



#149 FINOX BRUSHED NICKEL

PILLAR TAPS



00915

Cold Water Only Faucet

- Spout projection 5"
- Height 9-3/16"
- Hole for installation 1-3/16" D.
- Spout swivels 360°
- Drain not included



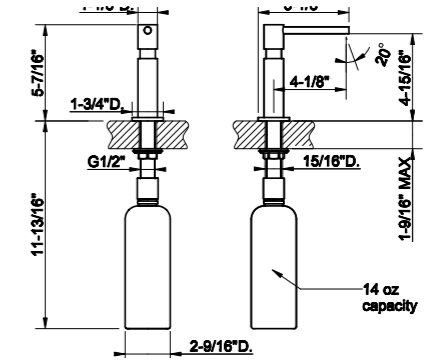
00915 031	Chrome	710
00915 149	Finnox Brushed Nickel	960
00915 299	Matt Black	960



#031 CHROME #149 FINNOXBRUSHED NICKEL

#299 MATTE BLACK

SOAP DISPENSER

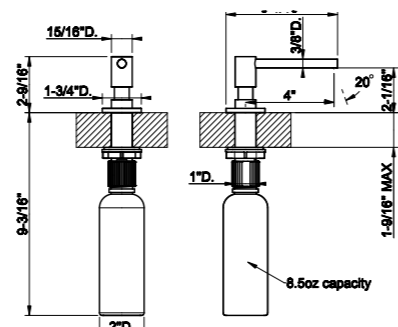


29651

Soap/Lotion dispenser

- Refillable from above the deck
- 14oz bottle capacity
- Hole for installation 15/16" D.

29651	031	Chrome	450
29651	149	Finnox Brushed Nickel	610
29651	299	Matte Black	610

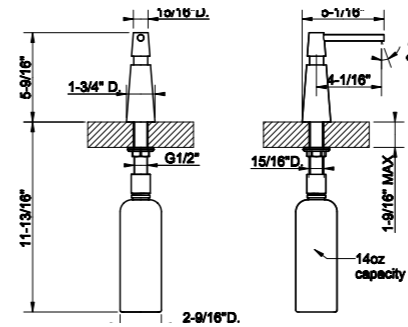


29660

Soap/Lotion dispenser

- Refillable from above the deck
- 6.5oz bottle capacity
- Hole for installation 1" D.

29660	239	Steel Brushed	440
29660	707	Black Metal Brushed	830
29660	708	Copper Brushed	830
29660	726	Warm Bronze Brushed	830
29660	727	Brass Brushed	830
29660	299	Matte Black	595



29654

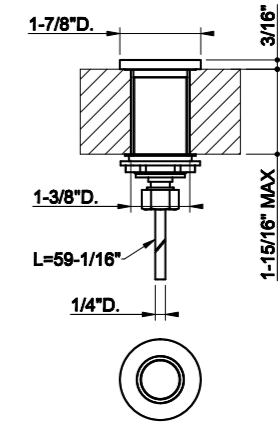
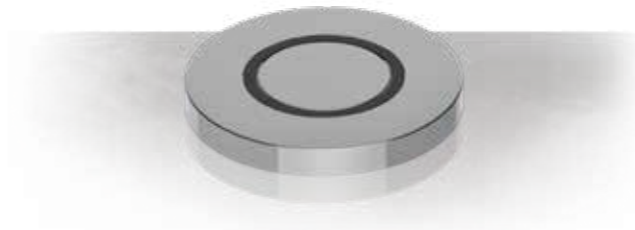
Soap/Lotion dispenser

- Refillable from above the deck
- 14oz bottle capacity
- Hole for installation 15/16" D.

29654	031	Chrome	480
29654	149	Finnox Brushed Nickel	650
29654	299	Matte Black	650



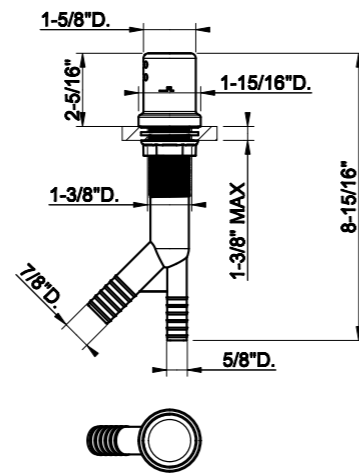
TECHNICAL ACCESSORIES



29772

Air Switch for Waste Disposal
 • Hole for installation 1-3/8" D.

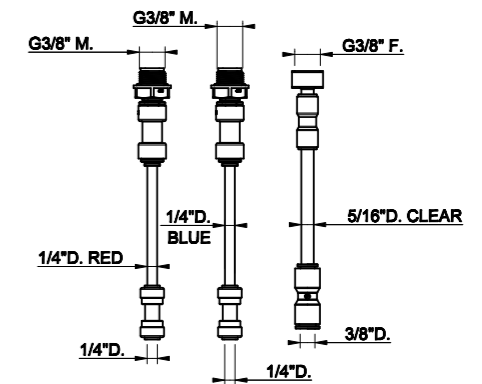
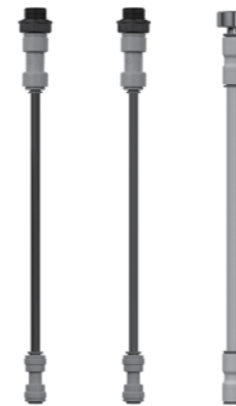
29772	031	Chrome	405
29772	149	Finox Brushed Nickel	545
29772	299	Matt Black	545
29772	707	Black Metal Brushed	760
29772	708	Copper Brushed	760
29772	726	Warm Bronze Brushed	760
29772	727	Brass Brushed	760



29770

Air gap
 • Hole for installation 1-3/8" D.
 • 5/8" inlet
 • 7/8" outlet

29770	031	Chrome	315
29770	149	Finox Brushed Nickel	430
29770	299	Matt Black	430
29770	707	Black Metal Brushed	595
29770	708	Copper Brushed	595
29770	726	Warm Bronze Brushed	595
29770	727	Brass Brushed	595



01394

Boiler Connection KIT REQUIRED
 Engineered to function with MT641-3 MOUNTAIN "Little Gourmet" Instant Hot Water Tank
 Tank and filter must be purchased separately and are not available from the Gessi Company.
 • Connection Tubing:
 • Supply - 1/4" Blue x48"
 • To Hot Tank Inlet - 1/4" Red x36"
 • To Hot Tank Outlet - 3/8" Clear x36"

01394	031	Chrome	300
-------	-----	--------	-----



PRODUCT CERTIFICATION STANDARDS

GESSI IN THE WORLD Gessi believes strongly in maintaining a compassionate responsibility to the environment and humane treatment of its employees. This vision has helped establish Gessi as a world leader in developing and encouraging new forms of humane capitalism.

Gessi also takes great pride in implementing sophisticated manufacturing techniques in its quest to preserve balance and focus in creating fashionable collections of luxury kitchen and bath faucets, matching accessories, decorative sinks and mirrors.

At its very core, Gessi sees itself as a socially and environmentally responsible company.



Gessi the ethical company, attentive to quality, employees and the environment.

Employing advanced technology, and sometimes inventing its own new processes, adhering to its own strict policies, often far beyond regulations, every day Gessi affirms its goal of preserving the environment, manufacturing creations of unparalleled quality and promoting a healthy workplace.

These is what Gessi strives for, in the belief these values should be shared by all those who want to foster a culture of the product that goes beyond simple appearances.

Certificate Management System: Environment



Gessi has been for years on the forefront of “green” production; in fact the Company has since long engaged in very serious R&D aimed at introducing technological or technical solutions in its products and processes, whose goal is the to minimize resources consumption and the overall impact on the environment, while still preserving outstanding aesthetics and proposing innovative designs at every new season.

Certificate Management System: Safety



The production philosophy of Gessi sets people at the centre of its ideal system as it pursue a concept of “total overall quality” of its processes, products and working conditions. The Company is also extremely attentive to safety and comfort of the environment where it’s people work.

Certificate Management System: Quality



The added value of a genuine, integrally “Made in Italy – Made in Gessi” production, is apparent of Gessi’s creations.

GENERAL TERMS & CONDITIONS

CONDITIONS OF SALE

All products become the buyer's responsibility when delivered by the carrier. All merchandise is shipped at customers' risk. Gessi North America reserves the right to modify specifications, design, pricing, and packaging, and weight of any item at our option without prior notice. All orders are subject to acceptance in writing by Gessi North America.

NOTE: The possession of this price list is not an obligation to offer or to sell any goods listed herein. This price list supersedes all prior price lists and their quotations and is subject to change without notice. All prices in this price list are published in US dollars. Existing trade terms remain in effect.

SPECIAL ORDERS

Items noted as 'special order' in the US catalog or sourced from the European catalog may not meet North America/CANADIAN building codes or any product approval certification standards for residential or other commercial applications in the Territory. It is the responsibility of the purchaser to check with the local building code departments to determine conformity before purchasing. Adaptors may be required for proper installation of the product. The purchase order for the product will only be released with the full understanding and compliance of these terms, conditions and limitations provided herein. This understanding must be acknowledged in writing with the signature of an authorized representative of the end user. Gessi S.p.A. or Gessi North America, Inc. will not be held liable for any claims regarding approvals. Special Order products are not returnable.

PRICES

All orders will be priced according to the prevailing prices at time of shipment.

Trade discounts from this price list are extended upon the condition of timely payment by the Buyer. Trade discounts for accounts past due are subject to being rescinded by Gessi North America, and at Gessi North America's sole and absolute discretion. Upon demand by the Gessi North America, the full list price for past due invoices shall become due, subject to monthly finance charges, as indicated below.

TERMS

Unless otherwise mutually agreed in writing, terms are Net 30 days from date of shipment. Past due accounts will be placed on a "Hold" status until the account is brought current. Gessi North America reserves the right to ship on a C.O.D. basis where deemed necessary. A finance charge of 1.5% per month will be charged on all past due accounts. Upon such time as Gessi North America has received full payment for all Products provided by Gessi North America, Gessi North America shall retain sufficient title to the Products that remain within the possession or control of the Buyer and shall be subject to on a demand of return by Gessi North America at any time pursuant to Gessi North America's security in of such Products having been fully satisfied.

RETURNED CHECKS

A \$40 service charge will be invoiced on all returned checks.

FREIGHT

All freight is F.O.B. Anaheim, California unless other arrangement are made in writing. Additional freight/handling charges may apply to Special Orders or expedited shipment requests on out of stock items via Air from Italy. Special order merchandise (non catalogue items) are non cancellable, non returnable and non refundable.

DELIVERIES

Gessi North America is not responsible for delays in deliveries due to circumstances beyond its control such as fires, strikes, transportation delays, material shortages, accidents or any other contingencies of similar nature.

RETURNS MODIFICATIONS AND CANCELLATIONS OF ORDERS

Merchandise cannot be returned without prior written authorization in the form of a RGA (returned goods authorization). Please include a copy of the invoice or packing slip and indicate the reason for the return. Returns must be shipped back freight pre-paid. Returns, other than for defects, are subject to a minimum 25% re-stocking charge and must be returned in its original packaging in new, resalable condition. Ceiling spouts in all series are non-returnable. Once an Order Confirmation is submitted, cancellations are allowed only for 10 working days from submission. Modifications to Orders are allowed for 10 working days from order confirmation.

WEBSITE TERMS & CONDITIONS OF USE

LEGAL NOTICE GESSI North America, INC.

Gessi North America, Inc.
704 North Valley Street, Suite E
Anaheim, California 92801
Voice 714.808.0099 – Fax 714.808.0973

Copyrights & Ownership of Intellectual Property

Gessi S.p.A. Parco Gessi, Vercelli (Italy) and its authorized North American distributor, Gessi North America Inc. reserves all rights for this Website, and owns the copyrights and intellectual property rights associated with the Site. This includes but is not limited to its design structure, logos, texts, pictures, sounds, animations and Site. Contents of this Website may not be copied, modified or distributed or made accessible to third parties without prior written consent. In some cases, copyrights for certain items on this Website belong to third parties. By giving access to this site, we do not intend to provide you a license or other interest in any intellectual property rights.

Trademarks

All Gessi trademarks, products descriptions and names on our Websites are protected under trademark law. This is particularly true of the brand name Gessi, Gessi logo and Gessi products names. The lack of identification of names and logos as trademarks cannot automatically be interpreted as meaning that they are not protected by applicable trademark law.

Accuracy of information and Control over Content

Gessi S.p.A. or its authorized North American distributor, Gessi North America Inc., shall not be held liable for any errors or modifications of information contained in this website. Gessi will not accept any liability for losses suffered directly or indirectly in connection with the use of this website.

Showroom Dealer Referral Disclaimer

Gessi S.p.A. or its authorized North American distributor, Gessi North America Inc., may list on its website, refer or supply information on where Gessi products may be purchased directly to the consumer or to the trade. All authorized Gessi showroom dealers are independent businesses. And as such, Gessi S.p.A. or Gessi North America shall not be held liable for any contractual disputes between the purchaser of Gessi products and its authorized showroom dealers regarding price, payments of merchandise, delivery, unethical conduct or acts of God. The purchaser is not under any obligation to acquire Gessi products from any specific referral by Gessi S.p.A. or Gessi North America, its independent sales agents or subsidiaries.

Internet Purchase and Unauthorized Sellers:

Gessi and its authorized North American distributor Gessi North America warns against buying its products from any reseller or retailer that is not an authorized Gessi reseller located within or outside the US and Canada. Sometimes the price(s) quoted may be lower in order to induce customers to purchase, especially in the case of Internet sales. However, products offered for sale by unauthorized resellers may be non-genuine Gessi products or may not be modified to US / Canadian standards, resulting in installation and performance-related problems.

ONLY GESSI PRODUCTS SOLD BY AUTHORIZED DEALERS AND RESELLERS IN THE UNITED STATES AND CANADA ARE COVERED BY THE GESSI WARRANTY.

To obtain warranty repair or replacement service, write to **Gessi North America, Inc.**

Please include in your letter

- date of purchase and installation
- model, serial number of product and description of affected part(s)
- description of the defect
- copy of original sales receipt (without a sales receipt Gessi will not honor this warranty; the warranty rights are not valid).

ANY MODIFICATION TO THE PRESENT WARRANTY IS VALID ONLY IF IN WRITING EXECUTED BY GESSI. GESSI AND GESSI North America's SALES PERSONELL AND /OR DISTRIBUTOR OR DEALERS MAY NOT MODIFY THIS WARRANTY IN ANY MANNER WHATSOEVER. GESSI AND GESSI North America RESERVE THE RIGHT TO MODIFY ITS PRODUCT(S) OFFERINGS AND WARRANTIES AT ANY TIME WITHOUT PRIOR NOTICE.

CARE & MAINTENANCE

Use Precautions / Maintenance / Suggestions

Cleaning recommendations for Gessi products:

Gessi products are manufactured with different materials to comply with the market needs, design and functionality.

- The surfaces of Gessi fittings are produced using the finest materials and manufacturing processes and are constantly improved by advanced quality assurance methods. To fully enjoy your Gessi products and to preserve their appearance, please note the following.

1. Water contains lime, to a greater or lesser extent, which is retained on the surface of the fitting, leaving deposits after the water has evaporated. You can prevent lime deposits forming and keep your fitting clean by always wiping the fitting dry immediately after use with a soft, dry cloth.

2. Do not to use detergents, solvents, chemical or abrasive agents, metallic sponges, alcohol, etc. to clean the surface of Gessi products: permanent damage to the surface of the product, its appearance and aesthetics, the brightness and the integrity of the finishing may be compromised. Clean only with a soft sponge and soapy water. Clean and properly dry the faucet in case of the presence of very hard water, whose deposits could damage the surface.

3. Periodically clean the filter of the aerator after unscrewing it and removing lime scale deposits that may obstruct the opening.

Cleaning instructions:

- Clean as and when required.
- The cleaning dosage and time the cleaner needs to take effect should be adjusted according to the product. Test cleaner on an inconspicuous part of the product before applying to the product
- Regular cleaning can prevent calcification.
- When using a spray cleaner, spray first into a cloth or sponge- never directly onto the product, as the spray could enter openings and gaps and causing damage
- After cleaning, rinse thoroughly with clean water to remove any residue.

IMPORTANT: residues of liquid soaps, shampoos and shower foams can also cause damage. Rinse with clean water after using. If the surface is already damaged, the effect of cleaning materials will cause further damage.

Precautions for Installation

- Before installing the faucet, flush the water supply lines of all debris.
- After installation, a plumber should check for any leakage, by leaving water running for two 15 -minute periods. After this procedure, it is suggested to inspect or have inspected the flexible supply hoses periodically for damage.
- Always turn water OFF on both hot and cold water supply lines before removing existing faucet or disassembling the valve. Open faucet handle to relieve water pressure and ensure that complete water shut – off has occurred.

Technical Data and Compliance Requirements

- Working pressure should not be lower than 0,5 bar (7,25 psi) and not be higher than 5 bar (72 Psi). In case of higher working pressure use a pressure reducer valve.
- Maximum test installation pressure: 8 bar (116 psi).
- Avoid major pressure differences between hot and cold water supply. Differences in pressure, water with high mineral content, and soapy substances can corrode the internal and external parts of the hoses and affect sealing joints, causing leakage.
- Maximum working temperature for Gessi products is 70 °C (158 °F).

FOR MORE DETAILED TECHNICAL INFORMATION, PLEASE REFER TO INSTALLATION INSTRUCTIONS INCLUDED IN THE PACKAGING OF EACH PRODUCT.

COMMERCIAL WARRANTY

MANUFACTURER'S LIMITED WARRANTY: COMMERCIAL WARRANTY

Gessi provides the following a limited warranty for commercial application of its products: Gessi warranties that its products shall be free from defects in finish, material and workmanship for a period of one (1) year from the date of commercial installation. Parts made of glass, porcelain or wood, and all finishes on lavatory and bath drains are excluded from this warranty.

Gessi warrants all widespread faucet ceramic disc valve cartridges and all other valves and to be free from defects in material and workmanship for a period of one (1) year from the date of installation.

This warranty does not include shipping cost for returning covered products for repairs or replacement under this limited warranty and labor or other cost incurred in connection with product removal or installation under this limited warranty.

Responsibility for compliance with local code requirements: since local code requirements vary greatly, distributors, retailers, dealers, installation contractors and users of plumbing products should determine whether there are any code restrictions on the installation or use of a specific product. This warranty does not apply in case of violation of local compliance rules.

THIS WARRANTY IS THE EXCLUSIVE COMMERCIAL WARRANTY GRANTED BY GESSI AND IS IN LIEU OF ALL OTHER WARRANTIES EXPRESSED OR IMPLIED, INCLUDING THE IMPLIED WARRANTY OF MERCHANTABILITY AND GESSI North America OR FITNESS FOR A PARTICULAR PURPOSE.

THIS WARRANTY IS LIMITED SOLELY TO THE ABOVE AND THIS WARRANTY AND ANY WARRANTIES IMPLIED BY STATE LAW; IF ANY WILL APPLY ONLY FOR THE APPLICABLE WARRANTY PERIOD SPECIFIED HEREIN. GESSI AND ITS US AUTHORIZED DISTRIBUTOR GESSI North America WILL NOT BE LIABLE FOR ANY LOSS, DAMAGE, EXPENSE OR INCIDENTAL OR CONSEQUENTIAL DAMAGES OF ANY KIND, WHETHER BASED ON WARRANTY, CONTRACT OR NEGLIGENCE AND ARISING IN CONNECTION WITH THE SALE USE OR REPAIR OF GESSI PRODUCTS . SOME STATES DO NOT ALLOW THE EXCLUSION OR LIMITATION OF CONSEQUENTIAL DAMAGE OR LIMITATIONS O HOW LONG AN IMPLIED WARRANTY LASTS. AS A RESULT, IN CERTAIN STATES THE ABOVE LIMITATIONS OR EXCLUSIONS MAY NOT APPLY. THIS WARRANTY GIVES YOU SPECIFIC LEGAL RIGHTS, AND YOU MAY ALSO HAVE OTHER RIGHTS WHICH VARY FROM STATE TO STATE, UNLESS OTHERWISE CONTRARY TO STATE LAW GOVERNING THE PURCHASE, GESSI LIABILITY WILL NOT EXCEED THE CONTRACT PRICE FOR THE PRODUCT CLAIMED TO BE COVERED UNDER A WARRANTY CLAIM.

For service under this warranty a claim should be made through the contractor or dealer from or through whom the covered product was purchased, or that a service request, including a description of the product model, of the defect and a request for RGA be sent to the following address

Gessi North America, Inc.
704 North Valley Street, Suite E
Anaheim, California 92801
Voice 714.808.0099 - Fax 714.808.0973

Please include in your letter:

- date of purchase and installation
- model, serial number of product and description of affected part(s)
- description of the defect
- copy of original sales receipt (without a sales receipt Gessi will not honor this warranty; the warranty rights are not valid).

APPLICABLE LAW

This warranty is governed by California without effect to its conflict of laws rules . If your purchase was made directly from Gessi S.p.A. the California Commercial Code applies and application of the UN Convention on International Sales of Goods is expressly excluded.

This is Gessi's exclusive commercial written warranty.

COMMERCIAL WARRANTY

Product Warnings and Recommendations

- DUE TO THE DESIGN OF SOME PARTS/PRODUCTS, SHARP EDGES MAY CAUSE INJURIES IF MISHANDLED OR TOUCHED.
- DO NOT LET CHILDREN PLAY WITH THE HANDLES OR LEVERS OF THE FAUCETS OR REVOLVING SPOUTS, HANDSPRAY. MISUSE SUCH AS CHILD' S PLAY MAY COMPROMISE THE CORRECT FUNCTION OF THE PRODUCTS OR RESULT IN BREAKAGE.
- DO NOT LEAVE CHILDREN UNATTENDED CLOSE TO BATH / SHOWER UNITS. SLIPPERY BATH/SHOWER FLOORS MAY RESULT IN SERIOUS INJURY INCLUDING CHILDREN OR ADULTS SLIPPING AND HITTING SHARP EDGES.
- OUR PRODUCTS HAVE SHARP EDGES: PLEASE HANDLE CAREFULLY TO AVOID POTENTIALLY SERIOUS INJURY.
- DO NOT LET FAUCETS DROP ON THE GROUND.
- DO NOT HIT FAUCETS WITH ANY OBJECT: ITS SURFACE AND THE SHAPE MAY BE DAMAGED.
- EXCESSIVE OR SUDDEN FORCE IN THE OPERATION OF THE LEVERS OF FAUCETS MAY BREAK THE INTERNAL COMPONENTS AND CAUSE CARTRIDGE LEAKS.
- KEEP YOUR PRODUCT SALE'S RECEIPT – MOUNTING INSTRUCTION AND THE WARRANTY – IN CASE OF DEFECT OR QUESTION. WITHOUT PURCHASE RECEIPTS WARRANTY CLAIMS WILL NOT BE HONORED.
- THE INSTRUCTIONS MANUAL SHOULD CAREFULLY READ BEFORE INSTALLATION AND THE INSTALLATION PROCEDURE PROVIDED THEREIN MUST BE PROPERLY FOLLOWED AND COMPLIED WITH
- ALL SHOWER UNITS EQUIPPED WITH A FLOW RESTRICTOR, PLEASE DO NOT REMOVE IT.
- WHEN YOU LEAVE HOME FOR MORE THAN ONE (1 DAY), REMEMBER TO SHUT OFF THE WATER MAIN SYSTEM – CHANGE IN PRESSURE MAY BREAK THE SUPPLY HOSES.
- USE ONLY ORIGINAL GESSI SPARE PARTS.
- DURING THE INSTALLATION THE USE OF EXCESSIVE FORCE SHOULD BE AVOIDED IN ORDER AVOID DAMAGES TO THE PRODUCT AND / OR ITS COMPONENTS AND PIECES. NEVER FORCE A COMPONENT OR PIECE INTO ANOTHER. NEVER FORCE SCREWS OR OVER TIGHTEN SCREWS.

Failure to follow the above warnings and recommendations may void your warranty.

CONSUMER WARRANTY

MANUFACTURER'S LIMITED WARRANTY: CONSUMER

RESIDENTIAL PRODUCTS

Warranty on Mechanical Parts

Gessi provides to the original purchaser of its products purchased and installed for residential application in the U.S. and Canada a limited lifetime warranty from the date of installation on all mechanical parts (except drains, for which only their chrome finishes are warranted) against manufacturing defects in material and workmanship under the terms and conditions set forth in this warranty.

Warranty on Valves and Cartridges

Gessi provides to the original purchaser of its valves purchased and installed for residential application in the U.S. and Canada the following limited warranties against manufacturing defects in material and workmanship during their normal North America: (1) ceramic disc valves carry a limited lifetime warranty; (2) single lever mixer cartridges: five (5) year limited warranty from the date of installation; (3) all other non-ceramic valve cartridges (pressure balance, thermostatic, diverter, etc.) are under a limited warranty for a two (2) year period from the date of installation.

Warranty on Finishes

Gessi provides to the original purchaser of its products a limited five (5) year warranty on all external plated finishes and a limited lifetime warranty on all PVD finishes from the date of installation for those faucets purchased and installed for residential application in the U.S. and Canada. Gloss staining and alkaline buildup may affect wear of the finish, over time and are not an indication of a defect, but of normal wear and tear; climate, atmospheric and other local conditions may increase normal wear. Products used under severe marine conditions and with heavy water are warranted for a period of one (1) year from the date of installation. All finishes on lavatory and bath drains and product installed outdoors are excluded from this warranty. Any possible imperfection in the natural materials employed to manufacture Gessi products is not to be considered as a defect, but as a normal feature of Gessi products handwork.

Remedies under Warranty

Gessi (through its US distributor Gessi North America) will provide free of charge and at its sole option, replacement part(s) or product (or if no longer available, a comparable product) to replace those which have proven defective in materials or workmanship. If you believe that you have a warranty claim for a Gessi product, the product must be returned to the dealer where originally purchased along with proof of purchase and a pertinent description of the problem and of your claim. A Return Goods Authorization ("RGA") Form must be requested and submitted to Gessi North America with an approved RGA number assigned by Gessi North America together with proper documentation for all warranty claims.

This warranty applies to the original consumer owner; IT DOES NOT COVER INSTALLATION OR ANY OTHER LABOR CHARGES AND SHALL NOT APPLY TO ANY PRODUCTS OR PARTS OF PRODUCTS WHEN:

- the repairs and/or installations covering the products were not made by an authorized licensed installer or were negligently performed, and/or Gessi spare parts, or parts that have been altered in any manner were used, unless previously approved in writing by Gessi North America; or sales receipt (without a sales receipt Gessi will not honor this warranty; the warranty rights are not valid).
- the covered products were damaged as a result of misuse, negligence, accident or faulty installation or maintenance performed by a plumber, contractor, service provider or member of the purchaser's household; or,
- the covered products were installed or used in a manner contrary to the product's printed instructions or this warranty's Instructions for filing a claim were not followed by the consumer; or,
- the covered products were damaged by the effects of severe air or water conditions, dirt, limescale or harsh, abrasive or aggressive cleaners and/or materials; or,
- the covered products were damaged as a result of conditions, malfunctions or defects derived from normal wear and tear; or,
- the covered products were damaged by ice and/or impurities present in water pipes; or,
- the covered products were used as a tool, hammer for any purpose other the one it has been designed for; or,
- electric cables were attached to the products; or,
- the warranty claim on the covered product(s) resulting from filter taps not being installed in the main water system or not installed before the supply hoses of the faucet.

CONSUMER WARRANTY

THIS WARRANTY IS THE SOLE AND EXCLUSIVE WARRANTY GRANTED BY GESSI AND IS IN LIEU OF ALL OTHER WARRANTIES EXPRESSED OR IMPLIED, INCLUDING THE IMPLIED WARRANTY OF MERCHANTABILITY AND GESSI North America OR FITNESS FOR A PARTICULAR PURPOSE, AND IS LIMITED TO DEFECTIVE PARTS REPLACEMENT ONLY. THE FOREGOING WARRANTIES ARE IN LIEU OF ALL OTHER WARRANTIES EXPRESS OR IMPLIED, INCLUDING BUT NOT LIMITED TO THE IMPLIED WARRANTIES OF MERCHANTABILITY AND FITNESS FOR A PARTICULAR PURPOSE.

THIS WARRANTY IS LIMITED SOLELY TO THE ABOVE AND THIS WARRANTY AND ANY WARRANTIES IMPLIED BY STATE LAW; IF ANY WILL APPLY ONLY FOR THE APPLICABLE WARRANTY PERIOD SPECIFIED HEREIN. GESSI AND ITS US AUTHORIZED DISTRIBUTOR GESSI North America WILL NOT BE LIABLE FOR ANY LOSS, DAMAGE, EXPENSE OR INCIDENTAL OR CONSEQUENTIAL DAMAGES OF ANY KIND, WHETHER BASED ON WARRANTY, CONTRACT OR NEGLIGENCE AND ARISING IN CONNECTION WITH THE SALE USE OR REPAIR OF GESSI PRODUCTS . SOME STATES DO NOT ALLOW THE EXCLUSION OR LIMITATION OF CONSEQUENTIAL DAMAGE OR LIMITATIONS ON HOW LONG AN IMPLIED WARRANTY LASTS. AS A RESULT, IN CERTAIN STATES THE ABOVE LIMITATIONS OR EXCLUSIONS MAY NOT APPLY. THIS WARRANTY GIVES YOU SPECIFIC LEGAL RIGHTS, AND YOU MAY ALSO HAVE OTHER RIGHTS WHICH VARY FROM STATE TO STATE, UNLESS OTHERWISE CONTRARY TO STATE LAW GOVERNING THE PURCHASE, GESSI LIABILITY WILL NOT EXCEED THE CONTRACT PRICE FOR THE PRODUCT CLAIMED TO BE COVERED UNDER A WARRANTY CLAIM.

For service under this warranty, a request should be made through the contractor or dealer from whom the product was purchased, or a service request (including a description of the product model and nature of the defect with a request for a RGA) be sent to the following address:

Please include in your letter:

- date of purchase and installation
- model, serial number of product and description of affected part(s)
- description of the defect
- copy of the original sales receipt (without a sales receipt this warranty will not be honored).

APPLICATION

If your purchase was made directly from Gessi S.p.A. the UCC applies and application of the UN Convention on International Sales of Goods is expressly excluded.

This is the Gessi exclusive written warranty to the consumer.



Gessi North America, Inc.
704 North Valley Street, Suite E
Anaheim, California 92801
Voice 714.808.0099 - Fax 714.808.0973

www.gessi.com

GESSI THE
PRIVATE
WELLNESS
COMPANY®



GESSI App



gessi.com

Gessi North America, Inc.
704 North Valley Street, Suite E
Anaheim, California 92801
Voice 714.808.0099 - Fax 714.808.0973

www.gessi.com