

2025 Pricebook

MA MODERN AIRE



Tarin Yankovich
Southwestern U.S. Sales Manager

Luxury Brands
INTERNATIONAL, NA

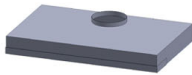
1 (855) 855.8030 x 626 • TARIN@LBINA.COM • WWW.LBINA.COM

Luxury Brands

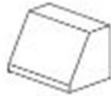
WALL HOODS

WALL MOUNT VENTILATION CANOPIES

For further information please select from a hood style below:



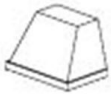
PS-04
NEW



PS-10



PS-11



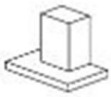
PS-12



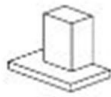
PS-13



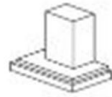
PS-15



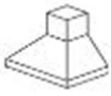
PS-16



PMW-16



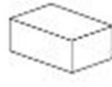
PS-19



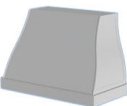
PS-20



PS-21



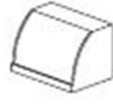
PS-22



PS-23
NEW



PS-24



PS-26



PS-29



PS-31



PS-32



PS-33



PS-35



Our warranty consists of 3 years parts and 3 years labor from the date of purchase.



M MODERN AIRE

STANDARD COLOR PALETTE

WHITES

GLOSS



Antique White



Dew White



Fluer De Sel



Pure White



Signal White



Traffic White

MATTE



Gardenia



Pita White



Pure White Matte



Signal White Matte



Swiss Coffee



Traffic White Matte

OFF-WHITES



Frangipane



Gray Moire



Ivory



Light Ivory



1317 Beige

BLACKS

GLOSS



Brilliant Black



Jet Black



Millennium Black



Signal Black



Traffic Black

MATTE



Black Magic Flat Matte



Fine Textured Black



Flat Black



Jet Black Matte



Millennium Black Matte



Solar Black



Textured Flat Black

GREYS

GLOSS



Basalt Grey



Dusty Grey



Kolbe Steel Grey



Light Grey

MATTE



Evo Grey



Graphite Grey



Gun Metal



Smoke Grey



Speckled Pewter

BRONZES



Aged Bronze



Low Lights Bronze



Oil Rubbed Bronze



Roman Bronze



Silver Bronze



Sun Bronze



Sun Kissed Bronze

BLUES

GLOSS



Bleu Cobalt



Bleu Royal



Dark Blue



Pigeon Blue



Steel Blue

MATTE



Interstate Blue



Pelagic Blue

OTHERS



Classic Green



Traffic Green



Textured Rust



Rouge Pourpre



Signal Red



Daffodil Yellow



Signal Yellow

All RAL Colors are available at no additional charge.

Non-standard colors and custom colors are available for an additional fee.

Finishes shown are for illustration purposes only and may not match actual finish. Please view samples to verify color selection prior to ordering.

Product Information and Specifications

Model Number Information

Model Number Decoding - Example Model Number - **PS1018-236**

PS - Professional Series (baffle filter) **PM** - Professional Mesh (mesh filter)

10 - Model Number / Shape of Canopy

18 - Height of Range Hood

2 - Type of blower Installed - 1=450cfm and below 2=600cfm 3=900cfm or 1200cfm 0=No Internal Motor

36 - Width of Hood

Electrical Information

600cfm or Smaller Internal Motor is	5amps	8 1/2" to right off C/L duct
900cfm & 1200cfm Internal Blower is	10amps	12 1/2" to right off C/L duct
836cfm Inline Blower is	10amps	8 1/2" to right off C/L duct
1266cfm Inline Blower is	10amps	8 1/2" to right off C/L duct
1400cfm Outside Roof or Wall Mount Blower is	10amps	8 1/2" to right off C/L duct
Set up for remote blower by others	10amps	8 1/2" to right off C/L duct

* Variable light (5amp) and fan speed switch (5amp) included

* U.L. Listed for indoor and outdoor (under roof) use.

Lighting

LED 3000K Lighting (30" - 36" = 2 lights) (42" - 54" = 3 lights) (60" - 66" = 4 lights)

Rear heat lamps available. Hood needs to be minimum 30" deep and 18" tall to accommodate.

Standard Canopy Duct Collar Locations

Wall Mount Hoods 1" From Back of Hood, Centered Left to Right

Island Mount Hoods Centered Front To Back and Left to Right

Recirculating Hoods 4" x 8" hole pattern on front of hood (600cfm only) includes charcoal filters

* Top vent is standard. Custom duct locations available upon request at additional charge

Construction

Standard Seams - Front and sides are bonded together leaving a small seam visible e.g. PS10

Seamless - Hood seams are welded then finished.

Seam caps - 1/2" (cannot change size) seam caps are used to hold hood together. e.g. PS15

Customizing Your Canopy

Modern-Aire will customize any canopy to your specific requirements

Customization Includes (at additional cost) - Custom Widths, Depths, Duct Locations and Materials

* 24" deep is standard for wall hoods - if 27" deep is wanted there is no additional cost.

Guidelines For Choosing The Correct CFM

100 CFM for every 10,000 BTU's

Guidelines For Choosing The Correct Mounting Height

Minimum Mounting Height 30" Above Cooking Surface

Maximum Mounting Height 36" Above Cooking Surface

Recommended Mounting Height 32" - 34" Above Cooking Surface

Expedite Program

35% up Charge Upon Availablity

Custom Hood Worksheet

Step 1	Pick size and base material finish Model No. and Finish: _____	\$ <input type="text"/>
Step 2	Add special finish if needed Special Finish (if Applies): _____	\$ <input type="text"/>
Step 3	If Internal motor is wanted add Motor Model #: _____	\$ <input type="text"/>
Step 4	If External motor is wanted add Motor Model #: _____	\$ <input type="text"/>
Step 5	If Ducting accessories wanted add List Accessories Wanted: _____	\$ <input type="text"/>
Step 6	If Lip Treatment is wanted add finish x width of hood and depth (both sides) if applies	\$ <input type="text"/>
Step 7	If Banding is wanted add per band price x qty	\$ <input type="text"/>
Step 8	If rivets on bands are wanted add number of bands x per band price	\$ <input type="text"/>
Step 9	If pot rail is wanted add finish x width of hood and depth (both sides) if applies	\$ <input type="text"/>
Step 10	If Crown is wanted add finish x width of hood and depth (both sides) if applies	\$ <input type="text"/>
	Total	\$ <input type="text"/>

Custom size hoods are quoted by Modern-Aire

TABLE OF CONTENTS

Wall Mount Canopies

PS04 (new)	4
PS1010	5
PS1018	6
PS1030	7
PS1118	8
PS1130	9
PS0930	10
PS1218	11
PS1230	12
PS1330	13
PS1518	14
PS1530	15
PMW1630	16
PS1630	17
PS1930	18
PS2030	19
PS2142	20
PS2218	21
PS2230	22
PS2330	23
PS2430	24
PS2618	25
PS2630	26
PS2918	27
PS2930	28
PS3118	29
PS3130	30
PS3230	31
PS3342	32
PS3542	33

Island Mount Canopies

PS1418	34
PS1430	35
PS1830	36
PS2730	37
PMI1630	38
PSI1630	39
PSI1930	40
PS1718	41
PS1730	42
PS3018	43
PS3030	44
PSI3342	45
PSI3230	46
PSI3542	47

Liner Enclosures

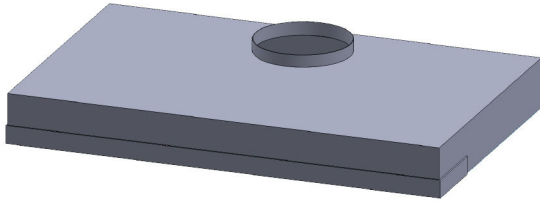
PSL	48
PSBL	49
PML	50

Modern Aire Ventilating

Fully Customizable. Built in the USA.



PS04 Spec Sheet



Available Standard Sizing

Model numbers below do not include a blower system.

PS0421-030	30" w x 4" h x 21.5" d
PS0421-036	36" w x 4" h x 21.5" d
PS0421-042	42" w x 4" h x 21.5" d
PS0421-048	48" w x 4" h x 21.5" d
PS0421-054	54" w x 4" h x 21.5" d
PS0421-060	60" w x 4" h x 21.5" d
PS0421-066	66" w x 4" h x 21.5" d

Available Material Choices

Brushed Stainless Steel
Polished Stainless Steel Band

Traffic White
Brushed Stainless Steel Band

Gold on Brushed Stainless
Brushed Stainless Steel Band

Flat Black
Brushed Stainless Steel Band

PS04 No Blower	600 CFM	1200 CFM	
30"	\$1800	\$2000	
36"	\$1800	\$2000	
42"	\$2000	\$2300	\$3000
48"	\$2000	\$2300	\$3000
54"	\$2300	\$2600	\$3300
60"	\$2300	\$2600	\$3300
66"	\$2700	\$3000	\$3700

Blower and Controls

Fan Type	Internal, Inline, External
CFM Options	200 CFM - 1400 CFM
Standard Venting	Top - Centered & 1" off rear
Fan Switch	Continuously Variable (5A Rheostat)
Fan Control Type	Variable Chrome Knob
Control Location	Underside

Lights and Controls

Light Type	3000K LED
Amount	2+ (varies based upon width)
Light Switch	Continuously Variable (5A Rheostat)
Light Control Type	Variable Chrome Knob
Control Location	Underside

Filters

Type	Brushed Stainless Steel Baffle Filters
Removable	Yes
Dishwasher Safe	Yes

Electrical

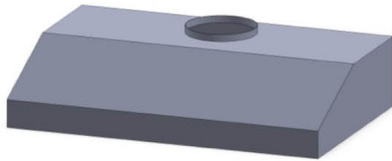
Circuit Breaker	10 Amps
Volts	120 Volts
Wiring	Hardwired
Standard Location	Top - Right of Blower

Warranty Information

Parts and Labor	3 Years
-----------------	---------



PS1010 Professional Series Hood Information



Width 30", 36", 42", 48", 54", 60", 66" 3000K LED Lighting

Bottom Depth 23" - Top Depth 12"

Height 10"

3" tall lip (front only)

1. PS1010 STANDARD SIZE PRICING - BLOWER NOT INCLUDED

Model #	Powder Coat <small>Non standard colors are an additional fee</small>	Brushed Stainless 304 #4	Brushed Copper - Brushed Brass
PS1010-030	\$1,179	\$1,179	\$3,483
PS1010-036	\$1,179	\$1,179	\$3,630
PS1010-042	\$1,467	\$1,467	\$3,849
PS1010-048	\$1,815	\$1,815	\$4,501
PS1010-054	\$2,433	\$2,433	\$4,725
PS1010-060	\$2,571	\$2,571	\$5,007
PS1010-066	\$2,746	\$2,746	\$5,368

2. SPECIAL FINISH (OPTIONAL - ADD TO STEP 1)

Hammer Tone (HM1)	Polished (Mirror)	Smoked
\$1,115	\$1,115	\$1,115
\$1,115	\$1,115	\$1,115
\$1,115	\$1,115	\$1,115
\$1,115	\$1,115	\$1,115
\$1,595	\$1,355	\$1,235
\$1,595	\$1,355	\$1,235
\$1,595	\$1,355	\$1,235

3. INTERNAL MOTOR OPTIONS

Item #	Description:	Each
	No Blower	\$0
IN200	Internal 200cfm (7" duct)	\$500
IN325	Internal 325cfm (7" duct)	\$500
IN450	Internal 450cfm (7" duct)	\$500
IN600	Internal 600cfm (8" duct)	\$500
RE600	Recirculating internal 600cfm	\$600
IN900	Internal 900cfm (10" duct)	\$1,200
IN1200	Internal 1200cfm (10" duct)	\$1,200

4. EXTERNAL MOTOR OPTIONS

Item #	Description:	Each
EMIL800	Inline blower only (8"duct)	\$905
EMIL800K	Inliner blower with duct accessories.	\$1,214
EMIL1200	Inline blower only (10" duct)	\$1,135
EMIL1200K	Inliner blower with duct accessories.	\$1,585
EMIL800 = 836cfm EMIL1200 = 1266cfm		
EM1400	External 1400cfm (10" duct)	\$1,200

5. DUCT ACCESSORIES

Item #	Description:	Each
S8	Duct Silencer 8"	\$227
S10	Duct Silencer 10"	\$350
BD8	inline Damper 8"	\$44
BD10	inline Damper 10"	\$55
MC8	Mounting Clamps 8"Duct	\$38
MC10	Mounting Clamps 10"Duct	\$45

6. HOOD ACCESSORIES (The pricing below is for all standard sizes, colors and finishes. Custom sizes and colors are available for an extra charge)

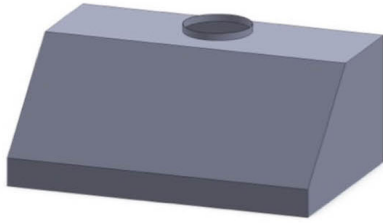
PRICED	Description:	PRICE
Per Inch	Crown 1 1/2" High	\$10
Per Inch	Tiered Crown - 3 1/2" High	\$12
Per Inch	Lip Treatment	\$12
Per Inch	Pot Rail	\$15
Each	Banding - 1 1/2" Wide	\$120
Per Band	Rivets - 4" Spacing	\$200
	CUSTOM DUCT LOCATION	\$240

PRICED	HM1 Hammertone	PRICE
Per Inch	Crown 1 1/2" High	\$12
Per Inch	Tiered Crown 3 1/2" High	\$15
Per Inch	Lip Treatment	\$15
Each	Banding - 1 1/2" Wide	\$180

STANDARD COLORS	
Over 200 powder coat colors in stock	
STANDARD FINISHES	
Stainless Steel: Brushed, Polished, Jitterbug	
Copper: Brushed, Polished, Smoked	
Brass: Brushed, Polished, Smoked	
We also offer clear coats for an extra charge	

FREIGHT

Zone Prices	
The freight charge is determined by what zone your state is in. Please refer to the zone map for the freight charge to your area.	
Oversized hoods are subject to additional pricing	



PS1018 Professional Series Hood Information

Width 30", 36", 42", 48", 54", 60", 66"

3000K LED Lighting

Bottom Depth 24" - Top Depth 12"

Height 18"

4" tall lip (front only)

1. PS1018 STANDARD SIZE PRICING - BLOWER NOT INCLUDED

Model #	Powder Coat Non standard colors are an additional fee	Brushed Stainless 304 #4	Brushed Copper - Brushed Brass
PS1018-030	\$2,479	\$2,479	\$3,725
PS1018-036	\$2,588	\$2,588	\$3,872
PS1018-042	\$2,691	\$2,691	\$4,104
PS1018-048	\$3,283	\$3,283	\$4,954
PS1018-054	\$3,932	\$3,932	\$5,590
PS1018-060	\$4,243	\$4,243	\$5,907
PS1018-066	\$4,447	\$4,447	\$6,200

2. SPECIAL FINISH (OPTIONAL - ADD TO STEP 1)

Hammer Tone (HM1)	Polished (Mirror)	Smoked
\$1,115	\$1,115	\$1,115
\$1,115	\$1,115	\$1,115
\$1,115	\$1,115	\$1,115
\$1,115	\$1,115	\$1,115
\$1,595	\$1,355	\$1,235
\$1,595	\$1,355	\$1,235
\$1,595	\$1,355	\$1,235

3. INTERNAL MOTOR OPTIONS

Item #	Description:	Each
	No Blower	\$0
IN200	Internal 200cfm (7" duct)	\$500
IN325	Internal 325cfm (7" duct)	\$500
IN450	Internal 450cfm (7" duct)	\$500
IN600	Internal 600cfm (8" duct)	\$500
RE600	Recirculating internal 600cfm	\$600
IN900	Internal 900cfm (10" duct)	\$1,200
IN1200	Internal 1200cfm (10" duct)	\$1,200

4. EXTERNAL MOTOR OPTIONS

Item #	Description:	Each
EMIL800	Inline blower only (8" duct)	\$905
EMIL800K	Inliner blower with duct accessories.	\$1,214
EMIL1200	Inline blower only (10" duct)	\$1,135
EMIL1200K	Inliner blower with duct accessories.	\$1,585
EMIL800 = 836cfm EMIL1200 = 1266cfm		
EM1400	External 1400cfm (10" duct)	\$1,200

5. *DUCT ACCESSORIES

Item #	Description:	Each
S8	Duct Silencer 8"	\$227
S10	Duct Silencer 10"	\$350
BD8	inline Damper 8"	\$44
BD10	inline Damper 10"	\$55
MC8	Mounting Clamps 8"Duct	\$38
MC10	Mounting Clamps 10"Duct	\$45

6. HOOD ACCESSORIES (The pricing below is for all standard sizes, colors and finishes. Custom sizes and colors are available for an extra charge)

PRICED	Description:	PRICE
Per Inch	Crown 1 1/2" High	\$10
Per Inch	Tiered Crown - 3 1/2" High	\$12
Per Inch	Lip Treatment	\$12
Per Inch	Pot Rail	\$15
Each	Banding - 1 1/2" Wide	\$120
Per Band	Rivets - 4" Spacing	\$200
	CUSTOM DUCT LOCATION	\$240

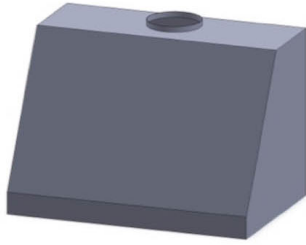
PRICED	HM1 Hammertone	PRICE
Per Inch	Crown 1 1/2" High	\$12
Per Inch	Tiered Crown 3 1/2" High	\$15
Per Inch	Lip Treatment	\$15
Each	Banding - 1 1/2" Wide	\$180

STANDARD COLORS
Over 200 powder coat colors in stock
STANDARD FINISHES
Stainless Steel: Brushed, Polished, Jitterbug
Copper: Brushed, Polished, Smoked
Brass: Brushed, Polished, Smoked
We also offer clear coats for an extra charge

FREIGHT

Zone Prices
The freight charge is determined by what zone your state is in. Please refer to the zone map for the freight charge to your area.
Oversized hoods are subject to additional pricing

Standing bands available upon request. Please contact us for more information.



PS1030 Professional Series Hood Information

Width 30", 36", 42", 48", 54", 60", 66"

3000K LED Lighting

Bottom Depth 24" - Top Depth 12"

Height 30"

4" tall lip (front only)

1. PS1030 STANDARD SIZE PRICING - BLOWER NOT INCLUDED

Model #	Powder Coat Non standard colors are an additional fee	Brushed Stainless 304 #4	Brushed Copper - Brushed Brass
PS1030-030	\$2,888	\$2,888	\$4,455
PS1030-036	\$3,023	\$3,023	\$4,744
PS1030-042	\$3,106	\$3,106	\$5,098
PS1030-048	\$3,660	\$3,660	\$6,167
PS1030-054	\$4,309	\$4,309	\$6,810
PS1030-060	\$4,620	\$4,620	\$7,120
PS1030-066	\$4,836	\$4,836	\$7,467

2. SPECIAL FINISH (OPTIONAL - ADD TO STEP 1)

Hammer Tone (HM1)	Polished (Mirror)	Smoked
\$1,115	\$1,115	\$1,115
\$1,115	\$1,115	\$1,115
\$1,115	\$1,115	\$1,115
\$1,115	\$1,115	\$1,115
\$1,595	\$1,355	\$1,235
\$1,595	\$1,355	\$1,235
\$1,595	\$1,355	\$1,235

3. INTERNAL MOTOR OPTIONS

Item #	Description:	Each
	No Blower	\$0
IN200	Internal 200cfm (7" duct)	\$500
IN325	Internal 325cfm (7" duct)	\$500
IN450	Internal 450cfm (7" duct)	\$500
IN600	Internal 600cfm (8" duct)	\$500
RE600	Recirculating internal 600cfm	\$600
IN900	Internal 900cfm (10" duct)	\$1,200
IN1200	Internal 1200cfm (10" duct)	\$1,200

4. EXTERNAL MOTOR OPTIONS

Item #	Description:	Each
EMIL800	Inline blower only (8" duct)	\$905
EMIL800K	Inliner blower with duct accessories.	\$1,214
EMIL1200	Inline blower only (10" duct)	\$1,135
EMIL1200K	Inliner blower with duct accessories.	\$1,585
EMIL800 = 836cfm EMIL1200 = 1266cfm		
EM1400	External 1400cfm (10" duct)	\$1,200

5. *DUCT ACCESSORIES

Item #	Description:	Each
S8	Duct Silencer 8"	\$227
S10	Duct Silencer 10"	\$350
BD8	inline Damper 8"	\$44
BD10	inline Damper 10"	\$55
MC8	Mounting Clamps 8"Duct	\$38
MC10	Mounting Clamps 10"Duct	\$45

6. HOOD ACCESSORIES (The pricing below is for all standard sizes, colors and finishes. Custom sizes and colors are available for an extra charge)

PRICED	Description:	PRICE
Per Inch	Crown 1 1/2" High	\$10
Per Inch	Tiered Crown - 3 1/2" High	\$12
Per Inch	Lip Treatment	\$12
Per Inch	Pot Rail	\$15
Each	Banding - 1 1/2" Wide	\$120
Per Band	Rivets - 4" Spacing	\$200
	CUSTOM DUCT LOCATION	\$240

PRICED	HM1 Hammertone	PRICE
Per Inch	Crown 1 1/2" High	\$12
Per Inch	Tiered Crown 3 1/2" High	\$15
Per Inch	Lip Treatment	\$15
Each	Banding - 1 1/2" Wide	\$180

STANDARD COLORS
Over 200 powder coat colors in stock
STANDARD FINISHES
Stainless Steel: Brushed, Polished, Jitterbug
Copper: Brushed, Polished, Smoked
Brass: Brushed, Polished, Smoked
We also offer clear coats for an extra charge

FREIGHT

Zone Prices
The freight charge is determined by what zone your state is in. Please refer to the zone map for the freight charge to your area.
Oversized hoods are subject to additional pricing

Standing bands available upon request. Please contact us for more information.



PS1118 Professional Series Hood Information

Width 30", 36", 42", 48", 54", 60", 66"

Two vertical bands same finish included

Bottom Depth 24" - Top Depth 12"

3000K LED Lighting

Height 18"

4" tall lip (front only)

1. PS1118 STANDARD SIZE PRICING - BLOWER NOT INCLUDED

Model #	Powder Coat Non standard colors are an additional fee	Brushed Stainless 304 #4	Brushed Copper - Brushed Brass
PS1118-030	\$2,817	\$2,817	\$3,986
PS1118-036	\$2,920	\$2,920	\$4,263
PS1118-042	\$3,036	\$3,036	\$4,532
PS1118-048	\$3,632	\$3,632	\$5,400
PS1118-054	\$4,282	\$4,282	\$6,036
PS1118-060	\$4,600	\$4,600	\$6,361
PS1118-066	\$4,814	\$4,814	\$6,668

2. SPECIAL FINISH (OPTIONAL - ADD TO STEP 1)

Hammer Tone (HM1)	Polished (Mirror)	Smoked
\$1,115	\$1,115	\$1,115
\$1,115	\$1,115	\$1,115
\$1,115	\$1,115	\$1,115
\$1,115	\$1,115	\$1,115
\$1,595	\$1,355	\$1,235
\$1,595	\$1,355	\$1,235
\$1,595	\$1,355	\$1,235

3. INTERNAL MOTOR OPTIONS

Item #	Description:	Each
	No Blower	\$0
IN200	Internal 200cfm (7" duct)	\$500
IN325	Internal 325cfm (7" duct)	\$500
IN450	Internal 450cfm (7" duct)	\$500
IN600	Internal 600cfm (8" duct)	\$500
RE600	Recirculating internal 600cfm	\$600
IN900	Internal 900cfm (10" duct)	\$1,200
IN1200	Internal 1200cfm (10" duct)	\$1,200

4. EXTERNAL MOTOR OPTIONS

Item #	Description:	Each
EMIL800	Inline blower only (8" duct)	\$905
EMIL800K	Inliner blower with duct accessories.	\$1,214
EMIL1200	Inline blower only (10" duct)	\$1,135
EMIL1200K	Inliner blower with duct accessories.	\$1,585
EMIL800 = 836cfm EMIL1200 = 1266cfm		
EM1400	External 1400cfm (10" duct)	\$1,200

5. *DUCT ACCESSORIES

Item #	Description:	Each
S8	Duct Silencer 8"	\$227
S10	Duct Silencer 10"	\$350
BD8	inline Damper 8"	\$44
BD10	inline Damper 10"	\$55
MC8	Mounting Clamps 8"Duct	\$38
MC10	Mounting Clamps 10"Duct	\$45

6. HOOD ACCESSORIES (The pricing below is for all standard sizes, colors and finishes. Custom sizes and colors are available for an extra charge)

PRICED	Description:	PRICE
Per Inch	Crown 1 1/2" High	\$10
Per Inch	Tiered Crown - 3 1/2" High	\$12
Per Inch	Lip Treatment	\$12
Per Inch	Pot Rail	\$15
Each	Banding - 1 1/2" Wide	\$120
Per Band	Rivets - 4" Spacing	\$200
	CUSTOM DUCT LOCATION	\$240

PRICED	HM1 Hammertone	PRICE
Per Inch	Crown 1 1/2" High	\$12
Per Inch	Tiered Crown 3 1/2" High	\$15
Per Inch	Lip Treatment	\$15
Each	Banding - 1 1/2" Wide	\$180

STANDARD COLORS
Over 200 powder coat colors in stock
STANDARD FINISHES
Stainless Steel: Brushed, Polished, Jitterbug
Copper: Brushed, Polished, Smoked
Brass: Brushed, Polished, Smoked
We also offer clear coats for an extra charge

FREIGHT

Zone Prices
The freight charge is determined by what zone your state is in. Please refer to the zone map for the freight charge to your area.
Oversized hoods are subject to additional pricing



PS1130 Professional Series Hood Information

Width 30", 36", 42", 48", 54", 60", 66"

Two vertical bands same finish included

Bottom Depth 24" - Top Depth 12"

3000K LED Lighting

Height 30"

4" tall lip (front only)

1. PS1130 STANDARD SIZE PRICING - BLOWER NOT INCLUDED

Model #	Powder Coat Non standard colors are an additional fee	Brushed Stainless 304 #4	Brushed Copper - Brushed Brass
PS1130-030	\$3,139	\$3,139	\$4,796
PS1130-036	\$3,293	\$3,293	\$5,014
PS1130-042	\$3,447	\$3,447	\$5,380
PS1130-048	\$4,047	\$4,047	\$6,333
PS1130-054	\$4,696	\$4,696	\$6,975
PS1130-060	\$5,007	\$5,007	\$7,293
PS1130-066	\$5,242	\$5,242	\$7,648

2. SPECIAL FINISH (OPTIONAL - ADD TO STEP 1)

Hammer Tone (HM1)	Polished (Mirror)	Smoked
\$1,115	\$1,115	\$1,115
\$1,115	\$1,115	\$1,115
\$1,115	\$1,115	\$1,115
\$1,115	\$1,115	\$1,115
\$1,595	\$1,355	\$1,235
\$1,595	\$1,355	\$1,235
\$1,595	\$1,355	\$1,235

3. INTERNAL MOTOR OPTIONS

Item #	Description:	Each
	No Blower	\$0
IN200	Internal 200cfm (7" duct)	\$500
IN325	Internal 325cfm (7" duct)	\$500
IN450	Internal 450cfm (7" duct)	\$500
IN600	Internal 600cfm (8" duct)	\$500
RE600	Recirculating internal 600cfm	\$600
IN900	Internal 900cfm (10" duct)	\$1,200
IN1200	Internal 1200cfm (10" duct)	\$1,200

4. EXTERNAL MOTOR OPTIONS

Item #	Description:	Each
EMIL800	Inline blower only (8" duct)	\$905
EMIL800K	Inliner blower with duct accessories.	\$1,214
EMIL1200	Inline blower only (10" duct)	\$1,135
EMIL1200K	Inliner blower with duct accessories.	\$1,585
EMIL800 = 836cfm EMIL1200 = 1266cfm		
EM1400	External 1400cfm (10" duct)	\$1,200

5. *DUCT ACCESSORIES

Item #	Description:	Each
S8	Duct Silencer 8"	\$227
S10	Duct Silencer 10"	\$350
BD8	inline Damper 8"	\$44
BD10	inline Damper 10"	\$55
MC8	Mounting Clamps 8"Duct	\$38
MC10	Mounting Clamps 10"Duct	\$45

6. HOOD ACCESSORIES (The pricing below is for all standard sizes, colors and finishes. Custom sizes and colors are available for an extra charge)

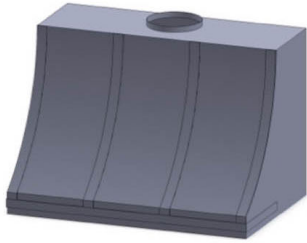
PRICED	Description:	PRICE
Per Inch	Crown 1 1/2" High	\$10
Per Inch	Tiered Crown - 3 1/2" High	\$12
Per Inch	Lip Treatment	\$12
Per Inch	Pot Rail	\$15
Each	Banding - 1 1/2" Wide	\$120
Per Band	Rivets - 4" Spacing	\$200
	CUSTOM DUCT LOCATION	\$240

PRICED	HM1 Hammertone	PRICE
Per Inch	Crown 1 1/2" High	\$12
Per Inch	Tiered Crown 3 1/2" High	\$15
Per Inch	Lip Treatment	\$15
Each	Banding - 1 1/2" Wide	\$180

STANDARD COLORS
Over 200 powder coat colors in stock
STANDARD FINISHES
Stainless Steel: Brushed, Polished, Jitterbug
Copper: Brushed, Polished, Smoked
Brass: Brushed, Polished, Smoked
We also offer clear coats for an extra charge

FREIGHT

Zone Prices
The freight charge is determined by what zone your state is in. Please refer to the zone map for the freight charge to your area.
Oversized hoods are subject to additional pricing



PS0930 Professional Series Hood Information

Width 30", 36", 42", 48", 54", 60", 66"	Bands in same finish as canopy included
Bottom Depth 24" - Top Depth 12"	3000K LED Lighting
Height 30"	
5" tall lip (front only)	

1. PS0930 STANDARD SIZE PRICING - BLOWER NOT INCLUDED

Model #	Powder Coat Non standard colors are an additional fee	Brushed Stainless 304 #4	Brushed Copper - Brushed Brass
PS0930-030	\$4,166	\$4,166	\$6,209
PS0930-036	\$4,320	\$4,320	\$6,427
PS0930-042	\$4,475	\$4,475	\$6,793
PS0930-048	\$5,152	\$5,152	\$7,853
PS0930-054	\$5,801	\$5,801	\$8,495
PS0930-060	\$6,112	\$6,112	\$8,813
PS0930-066	\$6,347	\$6,347	\$9,168

2. SPECIAL FINISH (OPTIONAL - ADD TO STEP 1)

Hammer Tone (HM1)	Polished (Mirror)	Smoked
\$1,115	\$1,115	\$1,115
\$1,115	\$1,115	\$1,115
\$1,115	\$1,115	\$1,115
\$1,115	\$1,115	\$1,115
\$1,595	\$1,355	\$1,235
\$1,595	\$1,355	\$1,235
\$1,595	\$1,355	\$1,235

3. INTERNAL MOTOR OPTIONS

Item #	Description:	Each
	No Blower	\$0
IN200	Internal 200cfm (7" duct)	\$500
IN325	Internal 325cfm (7" duct)	\$500
IN450	Internal 450cfm (7" duct)	\$500
IN600	Internal 600cfm (8" duct)	\$500
RE600	Recirculating internal 600cfm	\$600
IN900	Internal 900cfm (10" duct)	\$1,200
IN1200	Internal 1200cfm (10" duct)	\$1,200

4. EXTERNAL MOTOR OPTIONS

Item #	Description:	Each
EMIL800	Inline blower only (8" duct)	\$905
EMIL800K	Inliner blower with duct accessories.	\$1,214
EMIL1200	Inline blower only (10" duct)	\$1,135
EMIL1200K	Inliner blower with duct accessories.	\$1,585
EMIL800 = 836cfm EMIL1200 = 1266cfm		
EM1400	External 1400cfm (10" duct)	\$1,200

5. *DUCT ACCESSORIES

Item #	Description:	Each
S8	Duct Silencer 8"	\$227
S10	Duct Silencer 10"	\$350
BD8	inline Damper 8"	\$44
BD10	inline Damper 10"	\$55
MC8	Mounting Clamps 8"Duct	\$38
MC10	Mounting Clamps 10"Duct	\$45

6. HOOD ACCESSORIES (The pricing below is for all standard sizes, colors and finishes. Custom sizes and colors are available for an extra charge)

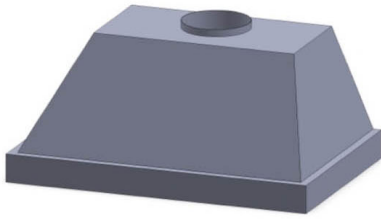
PRICED	Description:	PRICE
Per Inch	Crown 1 1/2" High	\$10
Per Inch	Tiered Crown - 3 1/2" High	\$12
Per Inch	Lip Treatment	\$12
Per Inch	Pot Rail	\$15
Each	Banding - 1 1/2" Wide	\$120
Per Band	Rivets - 4" Spacing	\$200
	CUSTOM DUCT LOCATION	\$240

PRICED	HM1 Hammertone	PRICE
Per Inch	Crown 1 1/2" High	\$12
Per Inch	Tiered Crown 3 1/2" High	\$15
Per Inch	Lip Treatment	\$15
Each	Banding - 1 1/2" Wide	\$180

STANDARD COLORS
Over 200 powder coat colors in stock
STANDARD FINISHES
Stainless Steel: Brushed, Polished, Jitterbug
Copper: Brushed, Polished, Smoked
Brass: Brushed, Polished, Smoked
We also offer clear coats for an extra charge

FREIGHT

Zone Prices
The freight charge is determined by what zone your state is in. Please refer to the zone map for the freight charge to your area.
Oversized hoods are subject to additional pricing



PS1218 Professional Series Hood Information

Width 30", 36", 42", 48", 54", 60", 66"	Top Width 12" Less Than Bottom
Bottom Depth 24" - Top Depth 12"	3000K LED Lighting
Height 18"	
4" tall lip	

1. PS1218 STANDARD SIZE PRICING - BLOWER NOT INCLUDED

Model #	Powder Coat Non standard colors are an additional fee	Brushed Stainless 304 #4	Brushed Copper - Brushed Brass
PS1218-030	\$2,655	\$2,655	\$4,501
PS1218-036	\$2,852	\$2,852	\$4,758
PS1218-042	\$3,001	\$3,001	\$5,164
PS1218-048	\$3,563	\$3,563	\$6,209
PS1218-054	\$4,154	\$4,154	\$6,749
PS1218-060	\$4,449	\$4,449	\$7,038
PS1218-066	\$4,655	\$4,655	\$7,379

2. SPECIAL FINISH (OPTIONAL - ADD TO STEP 1)

Hammer Tone (HM1)	Polished (Mirror)	Smoked
\$1,115	\$1,115	\$1,115
\$1,115	\$1,115	\$1,115
\$1,115	\$1,115	\$1,115
\$1,115	\$1,115	\$1,115
\$1,595	\$1,355	\$1,235
\$1,595	\$1,355	\$1,235
\$1,595	\$1,355	\$1,235

3. INTERNAL MOTOR OPTIONS

Item #	Description:	Each
	No Blower	\$0
IN200	Internal 200cfm (7" duct)	\$500
IN325	Internal 325cfm (7" duct)	\$500
IN450	Internal 450cfm (7" duct)	\$500
IN600	Internal 600cfm (8" duct)	\$500
RE600	Recirculating internal 600cfm	\$600
IN900	Internal 900cfm (10" duct)	\$1,200
IN1200	Internal 1200cfm (10" duct)	\$1,200

4. EXTERNAL MOTOR OPTIONS

Item #	Description:	Each
EMIL800	Inline blower only (8" duct)	\$905
EMIL800K	Inliner blower with duct accessories.	\$1,214
EMIL1200	Inline blower only (10" duct)	\$1,135
EMIL1200K	Inliner blower with duct accessories.	\$1,585
EMIL800 = 836cfm EMIL1200 = 1266cfm		
EM1400	External 1400cfm (10" duct)	\$1,200

5. *DUCT ACCESSORIES

Item #	Description:	Each
S8	Duct Silencer 8"	\$227
S10	Duct Silencer 10"	\$350
BD8	inline Damper 8"	\$44
BD10	inline Damper 10"	\$55
MC8	Mounting Clamps 8"Duct	\$38
MC10	Mounting Clamps 10"Duct	\$45

6. HOOD ACCESSORIES (The pricing below is for all standard sizes, colors and finishes. Custom sizes and colors are available for an extra charge)

PRICED	Description:	PRICE
Per Inch	Crown 1 1/2" High	\$10
Per Inch	Tiered Crown - 3 1/2" High	\$12
Per Inch	Lip Treatment	\$12
Per Inch	Pot Rail	\$15
Each	Banding - 1 1/2" Wide	\$120
Per Band	Rivets - 4" Spacing	\$200
	CUSTOM DUCT LOCATION	\$240

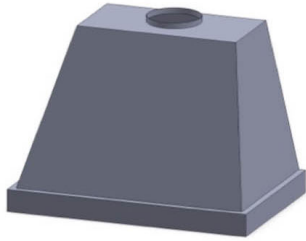
PRICED	HM1 Hammertone	PRICE
Per Inch	Crown 1 1/2" High	\$12
Per Inch	Tiered Crown 3 1/2" High	\$15
Per Inch	Lip Treatment	\$15
Each	Banding - 1 1/2" Wide	\$180

STANDARD COLORS
Over 200 powder coat colors in stock
STANDARD FINISHES
Stainless Steel: Brushed, Polished, Jitterbug
Copper: Brushed, Polished, Smoked
Brass: Brushed, Polished, Smoked
We also offer clear coats for an extra charge

FREIGHT

Zone Prices
The freight charge is determined by what zone your state is in. Please refer to the zone map for the freight charge to your area.
Oversized hoods are subject to additional pricing

Standing bands available upon request. Please contact us for more information.



PS1230 Professional Series Hood Information

Width 30", 36", 42", 48", 54", 60", 66"	Top Width 12" Less Than Bottom
Bottom Depth 24" - 12" Top Depth	3000K LED Lighting
Height 30"	
4" tall lip	

1. PS1230 STANDARD SIZE PRICING - BLOWER NOT INCLUDED

Model #	Powder Coat Non standard colors are an additional fee	Brushed Stainless 304 #4	Brushed Copper - Brushed Brass
PS1230-030	\$2,981	\$2,981	\$5,197
PS1230-036	\$3,236	\$3,236	\$5,570
PS1230-042	\$3,408	\$3,408	\$6,075
PS1230-048	\$4,049	\$4,049	\$7,263
PS1230-054	\$4,604	\$4,604	\$7,818
PS1230-060	\$4,879	\$4,879	\$8,087
PS1230-066	\$5,107	\$5,107	\$8,485

2. SPECIAL FINISH (OPTIONAL - ADD TO STEP 1)

Hammer Tone (HM1)	Polished (Mirror)	Smoked
\$1,115	\$1,115	\$1,115
\$1,115	\$1,115	\$1,115
\$1,115	\$1,115	\$1,115
\$1,115	\$1,115	\$1,115
\$1,595	\$1,355	\$1,235
\$1,595	\$1,355	\$1,235
\$1,595	\$1,355	\$1,235

3. INTERNAL MOTOR OPTIONS

Item #	Description:	Each
	No Blower	\$0
IN200	Internal 200cfm (7" duct)	\$500
IN325	Internal 325cfm (7" duct)	\$500
IN450	Internal 450cfm (7" duct)	\$500
IN600	Internal 600cfm (8" duct)	\$500
RE600	Recirculating internal 600cfm	\$600
IN900	Internal 900cfm (10" duct)	\$1,200
IN1200	Internal 1200cfm (10" duct)	\$1,200

4. EXTERNAL MOTOR OPTIONS

Item #	Description:	Each
EMIL800	Inline blower only (8" duct)	\$905
EMIL800K	Inliner blower with duct accessories.	\$1,214
EMIL1200	Inline blower only (10" duct)	\$1,135
EMIL1200K	Inliner blower with duct accessories.	\$1,585
EMIL800 = 836cfm EMIL1200 = 1266cfm		
EM1400	External 1400cfm (10" duct)	\$1,200

5. *DUCT ACCESSORIES

Item #	Description:	Each
S8	Duct Silencer 8"	\$227
S10	Duct Silencer 10"	\$350
BD8	inline Damper 8"	\$44
BD10	inline Damper 10"	\$55
MC8	Mounting Clamps 8"Duct	\$38
MC10	Mounting Clamps 10"Duct	\$45

6. HOOD ACCESSORIES (The pricing below is for all standard sizes, colors and finishes. Custom sizes and colors are available for an extra charge)

PRICED	Description:	PRICE
Per Inch	Crown 1 1/2" High	\$10
Per Inch	Tiered Crown - 3 1/2" High	\$12
Per Inch	Lip Treatment	\$12
Per Inch	Pot Rail	\$15
Each	Banding - 1 1/2" Wide	\$120
Per Band	Rivets - 4" Spacing	\$200
	CUSTOM DUCT LOCATION	\$240

PRICED	HM1 Hammertone	PRICE
Per Inch	Crown 1 1/2" High	\$12
Per Inch	Tiered Crown 3 1/2" High	\$15
Per Inch	Lip Treatment	\$15
Each	Banding - 1 1/2" Wide	\$180

STANDARD COLORS	
Over 200 powder coat colors in stock	
STANDARD FINISHES	
Stainless Steel: Brushed, Polished, Jitterbug	
Copper: Brushed, Polished, Smoked	
Brass: Brushed, Polished, Smoked	
We also offer clear coats for an extra charge	

FREIGHT

Zone Prices	
The freight charge is determined by what zone your state is in. Please refer to the zone map for the freight charge to your area.	
Oversized hoods are subject to additional pricing	

Standing bands available upon request. Please contact us for more information.

Clipped corners available by request. Please contact us for more information.



PS1330 Professional Series Hood Information

Width 30", 36", 42", 48", 54", 60", 66"

Two vertical bands same finish included

Bottom Depth 24" - Top Depth 12"

3000K LED Lighting

Height 30"

4" tall lip (front only)

1. PS1330 STANDARD SIZE PRICING - BLOWER NOT INCLUDED

Model #	Powder Coat Non standard colors are an additional fee	Brushed Stainless 304 #4	Brushed Copper - Brushed Brass
PS1330-030	\$4,079	\$4,079	\$5,992
PS1330-036	\$4,250	\$4,250	\$6,235
PS1330-042	\$4,436	\$4,436	\$6,634
PS1330-048	\$5,152	\$5,152	\$7,761
PS1330-054	\$5,758	\$5,758	\$8,467
PS1330-060	\$6,219	\$6,219	\$8,728
PS1330-066	\$6,518	\$6,518	\$9,159

2. SPECIAL FINISH (OPTIONAL - ADD TO STEP 1)

Hammer Tone (HM1)	Polished (Mirror)	Smoked
\$1,115	\$1,115	\$1,115
\$1,115	\$1,115	\$1,115
\$1,115	\$1,115	\$1,115
\$1,115	\$1,115	\$1,115
\$1,595	\$1,355	\$1,235
\$1,595	\$1,355	\$1,235
\$1,595	\$1,355	\$1,235

3. INTERNAL MOTOR OPTIONS

Item #	Description:	Each
	No Blower	\$0
IN200	Internal 200cfm (7" duct)	\$500
IN325	Internal 325cfm (7" duct)	\$500
IN450	Internal 450cfm (7" duct)	\$500
IN600	Internal 600cfm (8" duct)	\$500
RE600	Recirculating internal 600cfm	\$600
IN900	Internal 900cfm (10" duct)	\$1,200
IN1200	Internal 1200cfm (10" duct)	\$1,200

4. EXTERNAL MOTOR OPTIONS

Item #	Description:	Each
EMIL800	Inline blower only (8" duct)	\$905
EMIL800K	Inliner blower with duct accessories.	\$1,214
EMIL1200	Inline blower only (10" duct)	\$1,135
EMIL1200K	Inliner blower with duct accessories.	\$1,585
EMIL800 = 836cfm EMIL1200 = 1266cfm		
EM1400	External 1400cfm (10" duct)	\$1,200

5. *DUCT ACCESSORIES

Item #	Description:	Each
S8	Duct Silencer 8"	\$227
S10	Duct Silencer 10"	\$350
BD8	inline Damper 8"	\$44
BD10	inline Damper 10"	\$55
MC8	Mounting Clamps 8"Duct	\$38
MC10	Mounting Clamps 10"Duct	\$45

6. HOOD ACCESSORIES (The pricing below is for all standard sizes, colors and finishes. Custom sizes and colors are available for an extra charge)

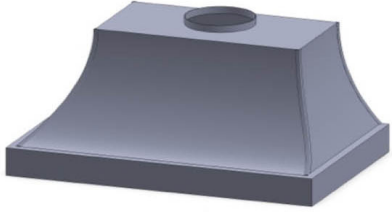
PRICED	Description:	PRICE
Per Inch	Crown 1 1/2" High	\$10
Per Inch	Tiered Crown - 3 1/2" High	\$12
Per Inch	Lip Treatment	\$12
Per Inch	Pot Rail	\$15
Each	Banding - 1 1/2" Wide	\$120
Per Band	Rivets - 4" Spacing	\$200
	CUSTOM DUCT LOCATION	\$240

PRICED	HM1 Hammertone	PRICE
Per Inch	Crown 1 1/2" High	\$12
Per Inch	Tiered Crown 3 1/2" High	\$15
Per Inch	Lip Treatment	\$15
Each	Banding - 1 1/2" Wide	\$180

STANDARD COLORS	
Over 200 powder coat colors in stock	
STANDARD FINISHES	
Stainless Steel: Brushed, Polished, Jitterbug	
Copper: Brushed, Polished, Smoked	
Brass: Brushed, Polished, Smoked	
We also offer clear coats for an extra charge	

FREIGHT

Zone Prices	
The freight charge is determined by what zone your state is in. Please refer to the zone map for the freight charge to your area.	
Oversized hoods are subject to additional pricing	



PS1518 Professional Series Hood Information

Width 30", 36", 42", 48", 54", 60", 66"

Top Width is 12" Less Than Bottom

Bottom Depth 24" - Top Depth 12"

Hood has Corner Seam Caps

Height 18"

3000K LED Lighting

4" tall lip

1. PS1518 STANDARD SIZE PRICING - BLOWER NOT INCLUDED

Model #	Powder Coat Non standard colors are an additional fee	Brushed Stainless 304 #4	Brushed Copper - Brushed Brass
PS1518-030	\$3,241	\$3,241	\$5,194
PS1518-036	\$3,408	\$3,408	\$5,425
PS1518-042	\$3,575	\$3,575	\$5,868
PS1518-048	\$4,220	\$4,220	\$6,962
PS1518-054	\$4,855	\$4,855	\$7,742
PS1518-060	\$5,173	\$5,173	\$7,922
PS1518-066	\$5,417	\$5,417	\$8,310

2. SPECIAL FINISH (OPTIONAL - ADD TO STEP 1)

Hammer Tone (HM1)	Polished (Mirror)	Smoked
\$1,115	\$1,115	\$1,115
\$1,115	\$1,115	\$1,115
\$1,115	\$1,115	\$1,115
\$1,115	\$1,115	\$1,115
\$1,595	\$1,355	\$1,235
\$1,595	\$1,355	\$1,235
\$1,595	\$1,355	\$1,235

3. INTERNAL MOTOR OPTIONS

Item #	Description:	Each
	No Blower	\$0
IN200	Internal 200cfm (7" duct)	\$500
IN325	Internal 325cfm (7" duct)	\$500
IN450	Internal 450cfm (7" duct)	\$500
IN600	Internal 600cfm (8" duct)	\$500
RE600	Recirculating internal 600cfm	\$600
IN900	Internal 900cfm (10" duct)	\$1,200
IN1200	Internal 1200cfm (10" duct)	\$1,200

4. EXTERNAL MOTOR OPTIONS

Item #	Description:	Each
EMIL800	Inline blower only (8" duct)	\$905
EMIL800K	Inliner blower with duct accessories.	\$1,214
EMIL1200	Inline blower only (10" duct)	\$1,135
EMIL1200K	Inliner blower with duct accessories.	\$1,585
EMIL800 = 836cfm EMIL1200 = 1266cfm		
EM1400	External 1400cfm (10" duct)	\$1,200

5. *DUCT ACCESSORIES

Item #	Description:	Each
S8	Duct Silencer 8"	\$227
S10	Duct Silencer 10"	\$350
BD8	inline Damper 8"	\$44
BD10	inline Damper 10"	\$55
MC8	Mounting Clamps 8"Duct	\$38
MC10	Mounting Clamps 10"Duct	\$45

6. HOOD ACCESSORIES (The pricing below is for all standard sizes, colors and finishes. Custom sizes and colors are available for an extra charge)

PRICED	Description:	PRICE
Per Inch	Crown 1 1/2" High	\$10
Per Inch	Tiered Crown - 3 1/2" High	\$12
Per Inch	Lip Treatment	\$12
Per Inch	Pot Rail	\$15
Each	Banding - 1 1/2" Wide	\$120
Per Band	Rivets - 4" Spacing	\$200
	CUSTOM DUCT LOCATION	\$240

PRICED	HM1 Hammertone	PRICE
Per Inch	Crown 1 1/2" High	\$12
Per Inch	Tiered Crown 3 1/2" High	\$15
Per Inch	Lip Treatment	\$15
Each	Banding - 1 1/2" Wide	\$180

STANDARD COLORS	
Over 200 powder coat colors in stock	
STANDARD FINISHES	
Stainless Steel: Brushed, Polished, Jitterbug	
Copper: Brushed, Polished, Smoked	
Brass: Brushed, Polished, Smoked	
We also offer clear coats for an extra charge	

FREIGHT

Zone Prices	
The freight charge is determined by what zone your state is in. Please refer to the zone map for the freight charge to your area.	
Oversized hoods are subject to additional pricing	



PS1530 Professional Series Hood Information

Width 30", 36", 42", 48", 54", 60", 66"	Top Width is 12" Less Than Bottom
Bottom Depth 24" - Top Depth 12"	Hood Has Corner Seam Caps
Height 30"	3000K LED Lighting
4" tall lip	

1. PS1530 STANDARD SIZE PRICING - BLOWER NOT INCLUDED

Model #	Powder Coat Non standard colors are an additional fee	Brushed Stainless 304 #4	Brushed Copper - Brushed Brass
PS1530-030	\$3,807	\$3,807	\$6,183
PS1530-036	\$4,076	\$4,076	\$6,633
PS1530-042	\$4,314	\$4,314	\$7,237
PS1530-048	\$5,041	\$5,041	\$8,578
PS1530-054	\$5,691	\$5,691	\$9,227
PS1530-060	\$6,001	\$6,001	\$9,538
PS1530-066	\$6,289	\$6,289	\$10,012

2. SPECIAL FINISH (OPTIONAL - ADD TO STEP 1)

Hammer Tone (HM1)	Polished (Mirror)	Smoked
\$1,115	\$1,115	\$1,115
\$1,115	\$1,115	\$1,115
\$1,115	\$1,115	\$1,115
\$1,115	\$1,115	\$1,115
\$1,595	\$1,355	\$1,235
\$1,595	\$1,355	\$1,235
\$1,595	\$1,355	\$1,235

3. INTERNAL MOTOR OPTIONS

Item #	Description:	Each
	No Blower	\$0
IN200	Internal 200cfm (7" duct)	\$500
IN325	Internal 325cfm (7" duct)	\$500
IN450	Internal 450cfm (7" duct)	\$500
IN600	Internal 600cfm (8" duct)	\$500
RE600	Recirculating internal 600cfm	\$600
IN900	Internal 900cfm (10" duct)	\$1,200
IN1200	Internal 1200cfm (10" duct)	\$1,200

4. EXTERNAL MOTOR OPTIONS

Item #	Description:	Each
EMIL800	Inline blower only (8" duct)	\$905
EMIL800K	Inliner blower with duct accessories.	\$1,214
EMIL1200	Inline blower only (10" duct)	\$1,135
EMIL1200K	Inliner blower with duct accessories.	\$1,585
EMIL800 = 836cfm EMIL1200 = 1266cfm		
EM1400	External 1400cfm (10" duct)	\$1,200

5. *DUCT ACCESSORIES

Item #	Description:	Each
S8	Duct Silencer 8"	\$227
S10	Duct Silencer 10"	\$350
BD8	inline Damper 8"	\$44
BD10	inline Damper 10"	\$55
MC8	Mounting Clamps 8"Duct	\$38
MC10	Mounting Clamps 10"Duct	\$45

6. HOOD ACCESSORIES (The pricing below is for all standard sizes, colors and finishes. Custom sizes and colors are available for an extra charge)

PRICED	Description:	PRICE
Per Inch	Crown 1 1/2" High	\$10
Per Inch	Tiered Crown - 3 1/2" High	\$12
Per Inch	Lip Treatment	\$12
Per Inch	Pot Rail	\$15
Each	Banding - 1 1/2" Wide	\$120
Per Band	Rivets - 4" Spacing	\$200
	CUSTOM DUCT LOCATION	\$240

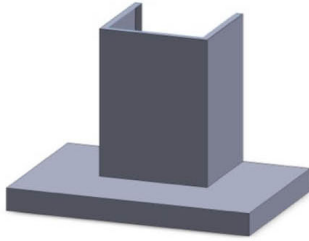
PRICED	HM1 Hammertone	PRICE
Per Inch	Crown 1 1/2" High	\$12
Per Inch	Tiered Crown 3 1/2" High	\$15
Per Inch	Lip Treatment	\$15
Each	Banding - 1 1/2" Wide	\$180
	Clipped corners available upon request. Please contact us for more information.	

STANDARD COLORS
Over 200 powder coat colors in stock
STANDARD FINISHES
Stainless Steel: Brushed, Polished, Jitterbug
Copper: Brushed, Polished, Smoked
Brass: Brushed, Polished, Smoked
We also offer clear coats for an extra charge

FREIGHT

Zone Prices
The freight charge is determined by what zone your state is in. Please refer to the zone map for the freight charge to your area.
Oversized hoods are subject to additional pricing

Clipped corners available upon request. Please contact us for more information.



PMW1630 Professional Series Hood Information

Width 30", 36", 42", 48", 54", 60", 66"
 Bottom Depth 24" - DC Depth 14"
 Height 30"
 4" Tall Canopy

1200cfm Has 24" Wide Duct Cover
 600cfm or Less Has 16" Wide Duct Cover
 External Blower Has 16" Wide Duct Cover
 Mesh Filters Standard
 3000K LED Lighting

1. PMW1630 STANDARD SIZE PRICING - BLOWER NOT INCLUDED

Model #	Powder Coat Non standard colors are an additional fee	Brushed Stainless 304 #4	Brushed Copper - Brushed Brass
PMW1630-030	\$2,404	\$2,404	\$5,814
PMW1630-036	\$2,449	\$2,449	\$5,859
PMW1630-042	\$2,500	\$2,500	\$5,904
PMW1630-048	\$2,720	\$2,720	\$6,124
PMW1630-054	\$3,343	\$3,343	\$6,670
PMW1630-060	\$3,619	\$3,619	\$7,030
PMW1630-066	\$4,069	\$4,069	\$7,480

2. SPECIAL FINISH (OPTIONAL - ADD TO STEP 1)

Hammer Tone (HM1)	Polished (Mirror)	Smoked
\$1,115	\$1,115	\$1,115
\$1,115	\$1,115	\$1,115
\$1,115	\$1,115	\$1,115
\$1,115	\$1,115	\$1,115
\$1,595	\$1,355	\$1,235
\$1,595	\$1,355	\$1,235
\$1,595	\$1,355	\$1,235

3. INTERNAL MOTOR OPTIONS

Item #	Description:	Each
	No Blower	\$0
IN200	Internal 200cfm (7" duct)	\$500
IN325	Internal 325cfm (7" duct)	\$500
IN450	Internal 450cfm (7" duct)	\$500
IN600	Internal 600cfm (8" duct)	\$500
RE600	Recirculating internal 600cfm	\$600
IN900	Internal 900cfm (10" duct)	\$1,200
IN1200	Internal 1200cfm (10" duct)	\$1,200

4. EXTERNAL MOTOR OPTIONS

Item #	Description:	Each
EMIL800	Inline blower only (8" duct)	\$905
EMIL800K	Inliner blower with duct accessories.	\$1,214
EMIL1200	Inline blower only (10" duct)	\$1,135
EMIL1200K	Inliner blower with duct accessories.	\$1,585
EMIL800 = 836cfm EMIL1200 = 1266cfm		
EM1400	External 1400cfm (10" duct)	\$1,200

5. *DUCT ACCESSORIES

Item #	Description:	Each
S8	Duct Silencer 8"	\$227
S10	Duct Silencer 10"	\$350
BD8	inline Damper 8"	\$44
BD10	inline Damper 10"	\$55
MC8	Mounting Clamps 8"Duct	\$38
MC10	Mounting Clamps 10"Duct	\$45

6. HOOD ACCESSORIES (The pricing below is for all standard sizes, colors and finishes. Custom sizes and colors are available for an extra charge)

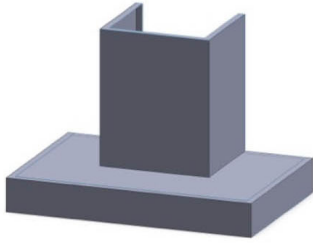
PRICED	Description:	PRICE
Per Inch	Crown 1 1/2" High	\$10
Per Inch	Tiered Crown - 3 1/2" High	\$12
Per Inch	Lip Treatment	\$12
Per Inch	Pot Rail	\$15
Each	Banding - 1 1/2" Wide	\$120
Per Band	Rivets - 4" Spacing	\$200
	CUSTOM DUCT LOCATION	\$240

PRICED	HM1 Hammertone	PRICE
Per Inch	Crown 1 1/2" High	\$12
Per Inch	Tiered Crown 3 1/2" High	\$15
Per Inch	Lip Treatment	\$15
Each	Banding - 1 1/2" Wide	\$180

STANDARD COLORS
Over 200 powder coat colors in stock
STANDARD FINISHES
Stainless Steel: Brushed, Polished, Jitterbug
Copper: Brushed, Polished, Smoked
Brass: Brushed, Polished, Smoked
We also offer clear coats for an extra charge

FREIGHT

Zone Prices
The freight charge is determined by what zone your state is in. Please refer to the zone map for the freight charge to your area.
Oversized hoods are subject to additional pricing



PS1630 Professional Series Hood Information

Width 30", 36", 42", 48", 54", 60", 66"

1200cfm Has 24" Wide Duct Cover

Bottom Depth 24" - DC Depth 14"

600cfm or Less Has 16" Wide Duct Cover

Height 30"

External Blower Has 16" Wide Duct Cover

6" Tall Canopy

3000K LED Lighting

1. PS1630 STANDARD SIZE PRICING - BLOWER NOT INCLUDED

Model #	Powder Coat Non standard colors are an additional fee	Brushed Stainless 304 #4	Brushed Copper - Brushed Brass
PS1630-030	\$2,992	\$2,992	\$6,399
PS1630-036	\$3,040	\$3,040	\$6,450
PS1630-042	\$3,091	\$3,091	\$6,527
PS1630-048	\$3,311	\$3,311	\$6,722
PS1630-054	\$3,934	\$3,934	\$7,345
PS1630-060	\$4,326	\$4,326	\$7,621
PS1630-066	\$4,660	\$4,660	\$8,070

2. SPECIAL FINISH (OPTIONAL - ADD TO STEP 1)

Hammer Tone (HM1)	Polished (Mirror)	Smoked
\$1,115	\$1,115	\$1,115
\$1,115	\$1,115	\$1,115
\$1,115	\$1,115	\$1,115
\$1,115	\$1,115	\$1,115
\$1,595	\$1,355	\$1,235
\$1,595	\$1,355	\$1,235
\$1,595	\$1,355	\$1,235

3. INTERNAL MOTOR OPTIONS

Item #	Description:	Each
	No Blower	\$0
IN200	Internal 200cfm (7" duct)	\$500
IN325	Internal 325cfm (7" duct)	\$500
IN450	Internal 450cfm (7" duct)	\$500
IN600	Internal 600cfm (8" duct)	\$500
RE600	Recirculating internal 600cfm	\$600
IN900	Internal 900cfm (10" duct)	\$1,200
IN1200	Internal 1200cfm (10" duct)	\$1,200

4. EXTERNAL MOTOR OPTIONS

Item #	Description:	Each
EMIL800	Inline blower only (8" duct)	\$905
EMIL800K	Inliner blower with duct accessories.	\$1,214
EMIL1200	Inline blower only (10" duct)	\$1,135
EMIL1200K	Inliner blower with duct accessories.	\$1,585
EMIL800 = 836cfm EMIL1200 = 1266cfm		
EM1400	External 1400cfm (10" duct)	\$1,200

5. *DUCT ACCESSORIES

Item #	Description:	Each
S8	Duct Silencer 8"	\$227
S10	Duct Silencer 10"	\$350
BD8	inline Damper 8"	\$44
BD10	inline Damper 10"	\$55
MC8	Mounting Clamps 8"Duct	\$38
MC10	Mounting Clamps 10"Duct	\$45

6. HOOD ACCESSORIES (The pricing below is for all standard sizes, colors and finishes. Custom sizes and colors are available for an extra charge)

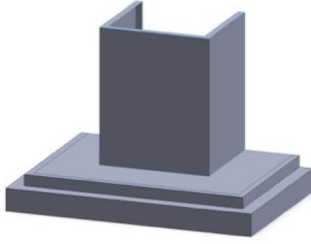
PRICED	Description:	PRICE
Per Inch	Crown 1 1/2" High	\$10
Per Inch	Tiered Crown - 3 1/2" High	\$12
Per Inch	Lip Treatment	\$12
Per Inch	Pot Rail	\$15
Each	Banding - 1 1/2" Wide	\$120
Per Band	Rivets - 4" Spacing	\$200
	CUSTOM DUCT LOCATION	\$240

PRICED	HM1 Hammertone	PRICE
Per Inch	Crown 1 1/2" High	\$12
Per Inch	Tiered Crown 3 1/2" High	\$15
Per Inch	Lip Treatment	\$15
Each	Banding - 1 1/2" Wide	\$180

STANDARD COLORS
Over 200 powder coat colors in stock
STANDARD FINISHES
Stainless Steel: Brushed, Polished, Jitterbug
Copper: Brushed, Polished, Smoked
Brass: Brushed, Polished, Smoked
We also offer clear coats for an extra charge

FREIGHT

Zone Prices
The freight charge is determined by what zone your state is in. Please refer to the zone map for the freight charge to your area.
Oversized hoods are subject to additional pricing



PS1930 Professional Series Hood Information

Width 30", 36", 42", 48", 54", 60", 66"	1200cfm Has 24" Duct Cover
Bottom Depth 24" - DC Depth 14"	600cfm or Less Has 16" Wide Duct Cover
Height 30"	External Blower Has 16" Wide Duct Cover
6" tall Canopy (4" + 2")	3000K LED Lighting

1. PS1930 STANDARD SIZE PRICING - BLOWER NOT INCLUDED

Model #	Powder Coat Non standard colors are an additional fee	Brushed Stainless 304 #4	Brushed Copper - Brushed Brass
PS1930-030	\$3,115	\$3,115	\$6,712
PS1930-036	\$3,192	\$3,192	\$7,027
PS1930-042	\$3,289	\$3,289	\$7,284
PS1930-048	\$3,805	\$3,805	\$7,749
PS1930-054	\$4,229	\$4,229	\$8,263
PS1930-060	\$4,550	\$4,550	\$8,424
PS1930-066	\$5,000	\$5,000	\$8,886

2. SPECIAL FINISH (OPTIONAL - ADD TO STEP 1)

Hammer Tone (HM1)	Polished (Mirror)	Smoked
\$1,115	\$1,115	\$1,115
\$1,115	\$1,115	\$1,115
\$1,115	\$1,115	\$1,115
\$1,115	\$1,115	\$1,115
\$1,595	\$1,355	\$1,235
\$1,595	\$1,355	\$1,235
\$1,595	\$1,355	\$1,235

3. INTERNAL MOTOR OPTIONS

Item #	Description:	Each
	No Blower	\$0
IN200	Internal 200cfm (7" duct)	\$500
IN325	Internal 325cfm (7" duct)	\$500
IN450	Internal 450cfm (7" duct)	\$500
IN600	Internal 600cfm (8" duct)	\$500
RE600	Recirculating internal 600cfm	\$600
IN900	Internal 900cfm (10" duct)	\$1,200
IN1200	Internal 1200cfm (10" duct)	\$1,200

4. EXTERNAL MOTOR OPTIONS

Item #	Description:	Each
EMIL800	Inline blower only (8" duct)	\$905
EMIL800K	Inliner blower with duct accessories.	\$1,214
EMIL1200	Inline blower only (10" duct)	\$1,135
EMIL1200K	Inliner blower with duct accessories.	\$1,585
EMIL800 = 836cfm EMIL1200 = 1266cfm		
EM1400	External 1400cfm (10" duct)	\$1,200

5. *DUCT ACCESSORIES

Item #	Description:	Each
S8	Duct Silencer 8"	\$227
S10	Duct Silencer 10"	\$350
BD8	inline Damper 8"	\$44
BD10	inline Damper 10"	\$55
MC8	Mounting Clamps 8"Duct	\$38
MC10	Mounting Clamps 10"Duct	\$45

6. HOOD ACCESSORIES (The pricing below is for all standard sizes, colors and finishes. Custom sizes and colors are available for an extra charge)

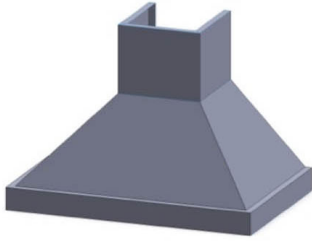
PRICED	Description:	PRICE
Per Inch	Crown 1 1/2" High	\$10
Per Inch	Tiered Crown - 3 1/2" High	\$12
Per Inch	Lip Treatment	\$12
Per Inch	Pot Rail	\$15
Each	Banding - 1 1/2" Wide	\$120
Per Band	Rivets - 4" Spacing	\$200
	CUSTOM DUCT LOCATION	\$240

PRICED	HM1 Hammertone	PRICE
Per Inch	Crown 1 1/2" High	\$12
Per Inch	Tiered Crown 3 1/2" High	\$15
Per Inch	Lip Treatment	\$15
Each	Banding - 1 1/2" Wide	\$180

STANDARD COLORS
Over 200 powder coat colors in stock
STANDARD FINISHES
Stainless Steel: Brushed, Polished, Jitterbug
Copper: Brushed, Polished, Smoked
Brass: Brushed, Polished, Smoked
Zinc: Brushed, Jitterbug, Anthra
We also offer clear coats for an extra charge

FREIGHT

Zone Prices
The freight charge is determined by what zone your state is in. Please refer to the zone map for the freight charge to your area.
Oversized hoods are subject to additional pricing



PS2030 Professional Series Hood Information

Width 30", 36", 42", 48", 54", 60", 66"	Duct Cover is 12" x 12"
Depth 24"	3000K LED Lighting
Height 30"	
4" tall lip - DC is 12" Tall	

1. PS2030 STANDARD SIZE PRICING - BLOWER NOT INCLUDED

Model #	Powder Coat Non standard colors are an additional fee	Brushed Stainless 304 #4	Brushed Copper - Brushed Brass
PS2030-030	\$3,550	\$3,550	\$4,487
PS2030-036	\$3,678	\$3,678	\$4,757
PS2030-042	\$3,832	\$3,832	\$5,027
PS2030-048	\$4,286	\$4,286	\$5,723
PS2030-054	\$4,894	\$4,894	\$6,331
PS2030-060	\$4,991	\$4,991	\$6,662
PS2030-066	\$5,234	\$5,234	\$6,994

2. SPECIAL FINISH (OPTIONAL - ADD TO STEP 1)

Hammer Tone (HM1)	Polished (Mirror)	Smoked
\$1,115	\$1,115	\$1,115
\$1,115	\$1,115	\$1,115
\$1,115	\$1,115	\$1,115
\$1,115	\$1,115	\$1,115
\$1,595	\$1,355	\$1,235
\$1,595	\$1,355	\$1,235
\$1,595	\$1,355	\$1,235

3. INTERNAL MOTOR OPTIONS

Item #	Description:	Each
	No Blower	\$0
IN200	Internal 200cfm (7" duct)	\$500
IN325	Internal 325cfm (7" duct)	\$500
IN450	Internal 450cfm (7" duct)	\$500
IN600	Internal 600cfm (8" duct)	\$500
RE600	Recirculating internal 600cfm	\$600
IN900	Internal 900cfm (10" duct)	\$1,200
IN1200	Internal 1200cfm (10" duct)	\$1,200

4. EXTERNAL MOTOR OPTIONS

Item #	Description:	Each
EMIL800	Inline blower only (8" duct)	\$905
EMIL800K	Inliner blower with duct accessories.	\$1,214
EMIL1200	Inline blower only (10" duct)	\$1,135
EMIL1200K	Inliner blower with duct accessories.	\$1,585
EMIL800 = 836cfm EMIL1200 = 1266cfm		
EM1400	External 1400cfm (10" duct)	\$1,200

5. *DUCT ACCESSORIES

Item #	Description:	Each
S8	Duct Silencer 8"	\$227
S10	Duct Silencer 10"	\$350
BD8	inline Damper 8"	\$44
BD10	inline Damper 10"	\$55
MC8	Mounting Clamps 8"Duct	\$38
MC10	Mounting Clamps 10"Duct	\$45

6. HOOD ACCESSORIES (The pricing below is for all standard sizes, colors and finishes. Custom sizes and colors are available for an extra charge)

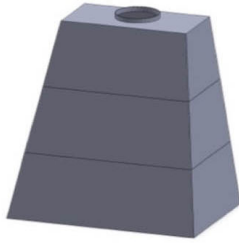
PRICED	Description:	PRICE
Per Inch	Crown 1 1/2" High	\$10
Per Inch	Tiered Crown - 3 1/2" High	\$12
Per Inch	Lip Treatment	\$12
Per Inch	Pot Rail	\$15
Each	Banding - 1 1/2" Wide	\$120
Per Band	Rivets - 4" Spacing	\$200
	CUSTOM DUCT LOCATION	\$240

PRICED	HM1 Hammertone	PRICE
Per Inch	Crown 1 1/2" High	\$12
Per Inch	Tiered Crown 3 1/2" High	\$15
Per Inch	Lip Treatment	\$15
Each	Banding - 1 1/2" Wide	\$180

STANDARD COLORS
Over 200 powder coat colors in stock
STANDARD FINISHES
Stainless Steel: Brushed, Polished, Jitterbug
Copper: Brushed, Polished, Smoked
Brass: Brushed, Polished, Smoked
We also offer clear coats for an extra charge

FREIGHT

Zone Prices
The freight charge is determined by what zone your state is in. Please refer to the zone map for the freight charge to your area.
Oversized hoods are subject to additional pricing



PS2142 Professional Series Hood Information

Width 30", 36", 42", 48", 54", 60", 66"

Top Width is 18" Less Than Bottom

Bottom Depth 24" - Top Depth is 12"

3000K LED Lighting

Height 42"

1. PS2142 STANDARD SIZE PRICING - BLOWER NOT INCLUDED

Model #	Powder Coat Non standard colors are an additional fee	Brushed Stainless 304 #4	Brushed Copper - Brushed Brass
PS2142-030	\$4,487	\$4,487	\$7,050
PS2142-036	\$4,783	\$4,783	\$7,481
PS2142-042	\$4,982	\$4,982	\$8,065
PS2142-048	\$5,774	\$5,774	\$9,489
PS2142-054	\$6,416	\$6,416	\$10,132
PS2142-060	\$6,734	\$6,734	\$10,443
PS2142-066	\$6,997	\$6,997	\$10,903

2. SPECIAL FINISH (OPTIONAL - ADD TO STEP 1)

Hammer Tone (HM1)	Polished (Mirror)	Smoked
\$1,115	\$1,115	\$1,115
\$1,115	\$1,115	\$1,115
\$1,115	\$1,115	\$1,115
\$1,115	\$1,115	\$1,115
\$1,595	\$1,355	\$1,235
\$1,595	\$1,355	\$1,235
\$1,595	\$1,355	\$1,235

3. INTERNAL MOTOR OPTIONS

Item #	Description:	Each
	No Blower	\$0
IN200	Internal 200cfm (7" duct)	\$500
IN325	Internal 325cfm (7" duct)	\$500
IN450	Internal 450cfm (7" duct)	\$500
IN600	Internal 600cfm (8" duct)	\$500
RE600	Recirculating internal 600cfm	\$600
IN900	Internal 900cfm (10" duct)	\$1,200
IN1200	Internal 1200cfm (10" duct)	\$1,200

4. EXTERNAL MOTOR OPTIONS

Item #	Description:	Each
EMIL800	Inline blower only (8" duct)	\$905
EMIL800K	Inliner blower with duct accessories.	\$1,214
EMIL1200	Inline blower only (10" duct)	\$1,135
EMIL1200K	Inliner blower with duct accessories.	\$1,585
EMIL800 = 836cfm EMIL1200 = 1266cfm		
EM1400	External 1400cfm (10" duct)	\$1,200

5. *DUCT ACCESSORIES

Item #	Description:	Each
S8	Duct Silencer 8"	\$227
S10	Duct Silencer 10"	\$350
BD8	inline Damper 8"	\$44
BD10	inline Damper 10"	\$55
MC8	Mounting Clamps 8"Duct	\$38
MC10	Mounting Clamps 10"Duct	\$45

6. HOOD ACCESSORIES (The pricing below is for all standard sizes, colors and finishes. Custom sizes and colors are available for an extra charge)

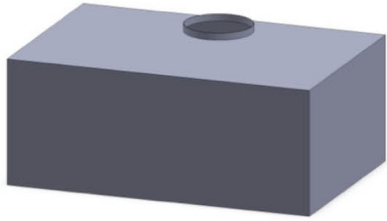
PRICED	Description:	PRICE
Per Inch	Crown 1 1/2" High	\$10
Per Inch	Tiered Crown - 3 1/2" High	\$12
Per Inch	Lip Treatment	\$12
Per Inch	Pot Rail	\$15
Each	Banding - 1 1/2" Wide	\$120
Per Band	Rivets - 4" Spacing	\$200
	CUSTOM DUCT LOCATION	\$240

PRICED	HM1 Hammertone	PRICE
Per Inch	Crown 1 1/2" High	\$12
Per Inch	Tiered Crown 3 1/2" High	\$15
Per Inch	Lip Treatment	\$15
Each	Banding - 1 1/2" Wide	\$180

STANDARD COLORS	
Over 200 powder coat colors in stock	
STANDARD FINISHES	
Stainless Steel: Brushed, Polished, Jitterbug	
Copper: Brushed, Polished, Smoked	
Brass: Brushed, Polished, Smoked	
We also offer clear coats for an extra charge	

FREIGHT

Zone Prices	
The freight charge is determined by what zone your state is in. Please refer to the zone map for the freight charge to your area.	
Oversized hoods are subject to additional pricing	



PS2218 Professional Series Hood Information

Width 30", 36", 42", 48", 54", 60", 66"

3000K LED Lighting

Depth 24"

Height 18"

1. PS2218 STANDARD SIZE PRICING - BLOWER NOT INCLUDED

Model #	Powder Coat Non standard colors are an additional fee	Brushed Stainless 304 #4	Brushed Copper - Brushed Brass
PS2218-030	\$2,445	\$2,445	\$5,721
PS2218-036	\$2,560	\$2,560	\$6,003
PS2218-042	\$2,663	\$2,663	\$6,235
PS2218-048	\$3,315	\$3,315	\$7,293
PS2218-054	\$3,964	\$3,964	\$7,942
PS2218-060	\$4,268	\$4,268	\$8,246
PS2218-066	\$4,464	\$4,464	\$8,652

2. SPECIAL FINISH (OPTIONAL - ADD TO STEP 1)

Hammer Tone (HM1)	Polished (Mirror)	Smoked
\$1,115	\$1,115	\$1,115
\$1,115	\$1,115	\$1,115
\$1,115	\$1,115	\$1,115
\$1,115	\$1,115	\$1,115
\$1,595	\$1,355	\$1,235
\$1,595	\$1,355	\$1,235
\$1,595	\$1,355	\$1,235

3. INTERNAL MOTOR OPTIONS

Item #	Description:	Each
	No Blower	\$0
IN200	Internal 200cfm (7" duct)	\$500
IN325	Internal 325cfm (7" duct)	\$500
IN450	Internal 450cfm (7" duct)	\$500
IN600	Internal 600cfm (8" duct)	\$500
RE600	Recirculating internal 600cfm	\$600
IN900	Internal 900cfm (10" duct)	\$1,200
IN1200	Internal 1200cfm (10" duct)	\$1,200

4. EXTERNAL MOTOR OPTIONS

Item #	Description:	Each
EMIL800	Inline blower only (8" duct)	\$905
EMIL800K	Inliner blower with duct accessories.	\$1,214
EMIL1200	Inline blower only (10" duct)	\$1,135
EMIL1200K	Inliner blower with duct accessories.	\$1,585
EMIL800 = 836cfm EMIL1200 = 1266cfm		
EM1400	External 1400cfm (10" duct)	\$1,200

5. *DUCT ACCESSORIES

Item #	Description:	Each
S8	Duct Silencer 8"	\$227
S10	Duct Silencer 10"	\$350
BD8	inline Damper 8"	\$44
BD10	inline Damper 10"	\$55
MC8	Mounting Clamps 8"Duct	\$38
MC10	Mounting Clamps 10"Duct	\$45

6. HOOD ACCESSORIES (The pricing below is for all standard sizes, colors and finishes. Custom sizes and colors are available for an extra charge)

PRICED	Description:	PRICE
Per Inch	Crown 1 1/2" High	\$10
Per Inch	Tiered Crown - 3 1/2" High	\$12
Per Inch	Lip Treatment	\$12
Per Inch	Pot Rail	\$15
Each	Banding - 1 1/2" Wide	\$120
Per Band	Rivets - 4" Spacing	\$200
	CUSTOM DUCT LOCATION	\$240

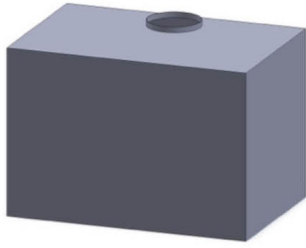
PRICED	HM1 Hammertone	PRICE
Per Inch	Crown 1 1/2" High	\$12
Per Inch	Tiered Crown 3 1/2" High	\$15
Per Inch	Lip Treatment	\$15
Each	Banding - 1 1/2" Wide	\$180

STANDARD COLORS	
Over 200 powder coat colors in stock	
STANDARD FINISHES	
Stainless Steel: Brushed, Polished, Jitterbug	
Copper: Brushed, Polished, Smoked	
Brass: Brushed, Polished, Smoked	
We also offer clear coats for an extra charge	

FREIGHT

Zone Prices	
The freight charge is determined by what zone your state is in. Please refer to the zone map for the freight charge to your area.	
Oversized hoods are subject to additional pricing	

Standing bands available upon request. Please contact us for more information.



PS2230 Professional Series Hood Information

Width 30", 36", 42", 48", 54", 60", 66"

3000K LED Lighting

Depth 24"

Height 30"

1. PS2230 STANDARD SIZE PRICING - BLOWER NOT INCLUDED

Model #	Powder Coat Non standard colors are an additional fee	Brushed Stainless 304 #4	Brushed Copper - Brushed Brass
PS2230-030	\$2,680	\$2,680	\$6,320
PS2230-036	\$2,809	\$2,809	\$6,634
PS2230-042	\$2,923	\$2,923	\$6,891
PS2230-048	\$3,625	\$3,625	\$8,045
PS2230-054	\$4,346	\$4,346	\$8,767
PS2230-060	\$4,684	\$4,684	\$9,104
PS2230-066	\$4,902	\$4,902	\$9,555

2. SPECIAL FINISH (OPTIONAL - ADD TO STEP 1)

Hammer Tone (HM1)	Polished (Mirror)	Smoked
\$1,115	\$1,115	\$1,115
\$1,115	\$1,115	\$1,115
\$1,115	\$1,115	\$1,115
\$1,115	\$1,115	\$1,115
\$1,595	\$1,355	\$1,235
\$1,595	\$1,355	\$1,235
\$1,595	\$1,355	\$1,235

3. INTERNAL MOTOR OPTIONS

Item #	Description:	Each
	No Blower	\$0
IN200	Internal 200cfm (7" duct)	\$500
IN325	Internal 325cfm (7" duct)	\$500
IN450	Internal 450cfm (7" duct)	\$500
IN600	Internal 600cfm (8" duct)	\$500
RE600	Recirculating internal 600cfm	\$600
IN900	Internal 900cfm (10" duct)	\$1,200
IN1200	Internal 1200cfm (10" duct)	\$1,200

4. EXTERNAL MOTOR OPTIONS

Item #	Description:	Each
EMIL800	Inline blower only (8" duct)	\$905
EMIL800K	Inliner blower with duct accessories.	\$1,214
EMIL1200	Inline blower only (10" duct)	\$1,135
EMIL1200K	Inliner blower with duct accessories.	\$1,585
EMIL800 = 836cfm EMIL1200 = 1266cfm		
EM1400	External 1400cfm (10" duct)	\$1,200

5. *DUCT ACCESSORIES

Item #	Description:	Each
S8	Duct Silencer 8"	\$227
S10	Duct Silencer 10"	\$350
BD8	inline Damper 8"	\$44
BD10	inline Damper 10"	\$55
MC8	Mounting Clamps 8"Duct	\$38
MC10	Mounting Clamps 10"Duct	\$45

6. HOOD ACCESSORIES (The pricing below is for all standard sizes, colors and finishes. Custom sizes and colors are available for an extra charge)

PRICED	Description:	PRICE
Per Inch	Crown 1 1/2" High	\$10
Per Inch	Tiered Crown - 3 1/2" High	\$12
Per Inch	Lip Treatment	\$12
Per Inch	Pot Rail	\$15
Each	Banding - 1 1/2" Wide	\$120
Per Band	Rivets - 4" Spacing	\$200
	CUSTOM DUCT LOCATION	\$240

PRICED	HM1 Hammertone	PRICE
Per Inch	Crown 1 1/2" High	\$12
Per Inch	Tiered Crown 3 1/2" High	\$15
Per Inch	Lip Treatment	\$15
Each	Banding - 1 1/2" Wide	\$180

STANDARD COLORS
Over 200 powder coat colors in stock
STANDARD FINISHES
Stainless Steel: Brushed, Polished, Jitterbug
Copper: Brushed, Polished, Smoked
Brass: Brushed, Polished, Smoked
We also offer clear coats for an extra charge

FREIGHT

Zone Prices
The freight charge is determined by what zone your state is in. Please refer to the zone map for the freight charge to your area.
Oversized hoods are subject to additional pricing

Standing bands available upon request. Please contact us for more information.



PS2330 Professional Series Hood Information

Width 30", 36", 42", 48", 54", 60", 66"

Top Width 12" Less Than Bottom

Depth 24"

3000K LED Lighting

Height 30"

4" tall lip

1. PS2330 STANDARD SIZE PRICING - BLOWER NOT INCLUDED

Model #	Powder Coat Non standard colors are an additional fee	Brushed Stainless 304 #4	Brushed Copper - Brushed Brass
PS2330-030	\$4,368	\$4,368	\$6,508
PS2330-036	\$4,519	\$4,519	\$6,760
PS2330-042	\$4,676	\$4,676	\$7,107
PS2330-048	\$5,419	\$5,419	\$8,246
PS2330-054	\$6,055	\$6,055	\$8,923
PS2330-060	\$6,439	\$6,439	\$9,217
PS2330-066	\$6,735	\$6,735	\$9,654

2. SPECIAL FINISH (OPTIONAL - ADD TO STEP 1)

Hammer Tone (HM1)	Polished (Mirror)	Smoked
\$1,115	\$1,115	\$1,115
\$1,115	\$1,115	\$1,115
\$1,115	\$1,115	\$1,115
\$1,115	\$1,115	\$1,115
\$1,595	\$1,355	\$1,235
\$1,595	\$1,355	\$1,235
\$1,595	\$1,355	\$1,235

3. INTERNAL MOTOR OPTIONS

Item #	Description:	Each
	No Blower	\$0
IN200	Internal 200cfm (7" duct)	\$500
IN325	Internal 325cfm (7" duct)	\$500
IN450	Internal 450cfm (7" duct)	\$500
IN600	Internal 600cfm (8" duct)	\$500
RE600	Recirculating internal 600cfm	\$600
IN900	Internal 900cfm (10" duct)	\$1,200
IN1200	Internal 1200cfm (10" duct)	\$1,200

4. EXTERNAL MOTOR OPTIONS

Item #	Description:	Each
EMIL800	Inline blower only (8" duct)	\$905
EMIL800K	Inliner blower with duct accessories.	\$1,214
EMIL1200	Inline blower only (10" duct)	\$1,135
EMIL1200K	Inliner blower with duct accessories.	\$1,585
EMIL800 = 836cfm EMIL1200 = 1266cfm		
EM1400	External 1400cfm (10" duct)	\$1,200

5. *DUCT ACCESSORIES

Item #	Description:	Each
S8	Duct Silencer 8"	\$227
S10	Duct Silencer 10"	\$350
BD8	inline Damper 8"	\$44
BD10	inline Damper 10"	\$55
MC8	Mounting Clamps 8"Duct	\$38
MC10	Mounting Clamps 10"Duct	\$45

6. HOOD ACCESSORIES (The pricing below is for all standard sizes, colors and finishes. Custom sizes and colors are available for an extra charge)

PRICED	Description:	PRICE
Per Inch	Crown 1 1/2" High	\$10
Per Inch	Tiered Crown - 3 1/2" High	\$12
Per Inch	Lip Treatment	\$12
Per Inch	Pot Rail	\$15
Each	Banding - 1 1/2" Wide	\$120
Per Band	Rivets - 4" Spacing	\$200
	CUSTOM DUCT LOCATION	\$240

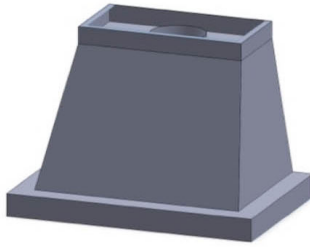
PRICED	HM1 Hammertone	PRICE
Per Inch	Crown 1 1/2" High	\$12
Per Inch	Tiered Crown 3 1/2" High	\$15
Per Inch	Lip Treatment	\$15
Each	Banding - 1 1/2" Wide	\$180

STANDARD COLORS
Over 200 powder coat colors in stock
STANDARD FINISHES
Stainless Steel: Brushed, Polished, Jitterbug
Copper: Brushed, Polished, Smoked
Brass: Brushed, Polished, Smoked
We also offer clear coats for an extra charge

FREIGHT

Zone Prices
The freight charge is determined by what zone your state is in. Please refer to the zone map for the freight charge to your area.
Oversized hoods are subject to additional pricing

Standing bands available upon request. Please contact us for more information.



PS2430 Professional Series Hood Information

Width 30", 36", 42", 48", 54", 60", 66"

Top Width 12" Less Than Bottom

Bottom Depth 24" - Top Depth 14"

3000K LED Lighting

Height 30"

5" tall lip - 3" tall Duct Cover

1. PS2430 STANDARD SIZE PRICING - BLOWER NOT INCLUDED

Model #	Powder Coat Non standard colors are an additional fee	Brushed Stainless 304 #4	Brushed Copper - Brushed Brass
PS2430-030	\$3,395	\$3,395	\$5,958
PS2430-036	\$3,691	\$3,691	\$6,466
PS2430-042	\$3,890	\$3,890	\$6,973
PS2430-048	\$4,599	\$4,599	\$8,315
PS2430-054	\$5,242	\$5,242	\$8,958
PS2430-060	\$5,559	\$5,559	\$9,268
PS2430-066	\$5,823	\$5,823	\$9,728

2. SPECIAL FINISH (OPTIONAL - ADD TO STEP 1)

Hammer Tone (HM1)	Polished (Mirror)	Smoked
\$1,115	\$1,115	\$1,115
\$1,115	\$1,115	\$1,115
\$1,115	\$1,115	\$1,115
\$1,115	\$1,115	\$1,115
\$1,595	\$1,355	\$1,235
\$1,595	\$1,355	\$1,235
\$1,595	\$1,355	\$1,235

3. INTERNAL MOTOR OPTIONS

Item #	Description:	Each
	No Blower	\$0
IN200	Internal 200cfm (7" duct)	\$500
IN325	Internal 325cfm (7" duct)	\$500
IN450	Internal 450cfm (7" duct)	\$500
IN600	Internal 600cfm (8" duct)	\$500
RE600	Recirculating internal 600cfm	\$600
IN900	Internal 900cfm (10" duct)	\$1,200
IN1200	Internal 1200cfm (10" duct)	\$1,200

4. EXTERNAL MOTOR OPTIONS

Item #	Description:	Each
EMIL800	Inline blower only (8" duct)	\$905
EMIL800K	Inliner blower with duct accessories.	\$1,214
EMIL1200	Inline blower only (10" duct)	\$1,135
EMIL1200K	Inliner blower with duct accessories.	\$1,585
EMIL800 = 836cfm EMIL1200 = 1266cfm		
EM1400	External 1400cfm (10" duct)	\$1,200

5. *DUCT ACCESSORIES

Item #	Description:	Each
S8	Duct Silencer 8"	\$227
S10	Duct Silencer 10"	\$350
BD8	inline Damper 8"	\$44
BD10	inline Damper 10"	\$55
MC8	Mounting Clamps 8"Duct	\$38
MC10	Mounting Clamps 10"Duct	\$45

6. HOOD ACCESSORIES (The pricing below is for all standard sizes, colors and finishes. Custom sizes and colors are available for an extra charge)

PRICED	Description:	PRICE
Per Inch	Crown 1 1/2" High	\$10
Per Inch	Tiered Crown - 3 1/2" High	\$12
Per Inch	Lip Treatment	\$12
Per Inch	Pot Rail	\$15
Each	Banding - 1 1/2" Wide	\$120
Per Band	Rivets - 4" Spacing	\$200
	CUSTOM DUCT LOCATION	\$240

PRICED	HM1 Hammertone	PRICE
Per Inch	Crown 1 1/2" High	\$12
Per Inch	Tiered Crown 3 1/2" High	\$15
Per Inch	Lip Treatment	\$15
Each	Banding - 1 1/2" Wide	\$180

STANDARD COLORS
Over 200 powder coat colors in stock
STANDARD FINISHES
Stainless Steel: Brushed, Polished, Jitterbug
Copper: Brushed, Polished, Smoked
Brass: Brushed, Polished, Smoked
We also offer clear coats for an extra charge

FREIGHT

Zone Prices
The freight charge is determined by what zone your state is in. Please refer to the zone map for the freight charge to your area.
Oversized hoods are subject to additional pricing



PS2618 Professional Series Hood Information

Width 30", 36", 42", 48", 54", 60", 66"

Two vertical bands same finish included

Bottom Depth 24" - 12" top Depth

3000K LED Lighting

Height 18"

4" tall lip (front only)

1. PS2618 STANDARD SIZE PRICING - BLOWER NOT INCLUDED

Model #	Powder Coat Non standard colors are an additional fee	Brushed Stainless 304 #4	Brushed Copper - Brushed Brass
PS2618-030	\$3,376	\$3,376	\$4,584
PS2618-036	\$3,537	\$3,537	\$4,834
PS2618-042	\$3,704	\$3,704	\$5,194
PS2618-048	\$4,337	\$4,337	\$6,153
PS2618-054	\$4,889	\$4,889	\$6,775
PS2618-060	\$5,290	\$5,290	\$7,100
PS2618-066	\$5,540	\$5,540	\$7,445

2. SPECIAL FINISH (OPTIONAL - ADD TO STEP 1)

Hammer Tone (HM1)	Polished (Mirror)	Smoked
\$1,115	\$1,115	\$1,115
\$1,115	\$1,115	\$1,115
\$1,115	\$1,115	\$1,115
\$1,115	\$1,115	\$1,115
\$1,595	\$1,355	\$1,235
\$1,595	\$1,355	\$1,235
\$1,595	\$1,355	\$1,235

3. INTERNAL MOTOR OPTIONS

Item #	Description:	Each
	No Blower	\$0
IN200	Internal 200cfm (7" duct)	\$500
IN325	Internal 325cfm (7" duct)	\$500
IN450	Internal 450cfm (7" duct)	\$500
IN600	Internal 600cfm (8" duct)	\$500
RE600	Recirculating internal 600cfm	\$600
IN900	Internal 900cfm (10" duct)	\$1,200
IN1200	Internal 1200cfm (10" duct)	\$1,200

4. EXTERNAL MOTOR OPTIONS

Item #	Description:	Each
EMIL800	Inline blower only (8" duct)	\$905
EMIL800K	Inliner blower with duct accessories.	\$1,214
EMIL1200	Inline blower only (10" duct)	\$1,135
EMIL1200K	Inliner blower with duct accessories.	\$1,585
EMIL800 = 836cfm EMIL1200 = 1266cfm		
EM1400	External 1400cfm (10" duct)	\$1,200

5. *DUCT ACCESSORIES

Item #	Description:	Each
S8	Duct Silencer 8"	\$227
S10	Duct Silencer 10"	\$350
BD8	inline Damper 8"	\$44
BD10	inline Damper 10"	\$55
MC8	Mounting Clamps 8"Duct	\$38
MC10	Mounting Clamps 10"Duct	\$45

6. HOOD ACCESSORIES (The pricing below is for all standard sizes, colors and finishes. Custom sizes and colors are available for an extra charge)

PRICED	Description:	PRICE
Per Inch	Crown 1 1/2" High	\$10
Per Inch	Tiered Crown - 3 1/2" High	\$12
Per Inch	Lip Treatment	\$12
Per Inch	Pot Rail	\$15
Each	Banding - 1 1/2" Wide	\$120
Per Band	Rivets - 4" Spacing	\$200
	CUSTOM DUCT LOCATION	\$240

PRICED	HM1 Hammertone	PRICE
Per Inch	Crown 1 1/2" High	\$12
Per Inch	Tiered Crown 3 1/2" High	\$15
Per Inch	Lip Treatment	\$15
Each	Banding - 1 1/2" Wide	\$180

STANDARD COLORS
Over 200 powder coat colors in stock
STANDARD FINISHES
Stainless Steel: Brushed, Polished, Jitterbug
Copper: Brushed, Polished, Smoked
Brass: Brushed, Polished, Smoked
We also offer clear coats for an extra charge

FREIGHT

Zone Prices
The freight charge is determined by what zone your state is in. Please refer to the zone map for the freight charge to your area.
Oversized hoods are subject to additional pricing



PS2630 Professional Series Hood Information

Width 30", 36", 42", 48", 54", 60", 66"

Two vertical bands same finish included

Bottom Depth 24" - Top Depth 12"

3000K LED Lighting

Height 30"

4" tall lip (front only)

1. PS2630 STANDARD SIZE PRICING - BLOWER NOT INCLUDED

Model #	Powder Coat Non standard colors are an additional fee	Brushed Stainless 304 #4	Brushed Copper - Brushed Brass
PS2630-030	\$3,704	\$3,704	\$5,425
PS2630-036	\$3,858	\$3,858	\$5,644
PS2630-042	\$4,025	\$4,025	\$6,003
PS2630-048	\$4,689	\$4,689	\$7,038
PS2630-054	\$5,235	\$5,235	\$7,673
PS2630-060	\$5,649	\$5,649	\$7,908
PS2630-066	\$5,919	\$5,919	\$8,296

2. SPECIAL FINISH (OPTIONAL - ADD TO STEP 1)

Hammer Tone (HM1)	Polished (Mirror)	Smoked
\$1,115	\$1,115	\$1,115
\$1,115	\$1,115	\$1,115
\$1,115	\$1,115	\$1,115
\$1,115	\$1,115	\$1,115
\$1,595	\$1,355	\$1,235
\$1,595	\$1,355	\$1,235
\$1,595	\$1,355	\$1,235

3. INTERNAL MOTOR OPTIONS

Item #	Description:	Each
	No Blower	\$0
IN200	Internal 200cfm (7" duct)	\$500
IN325	Internal 325cfm (7" duct)	\$500
IN450	Internal 450cfm (7" duct)	\$500
IN600	Internal 600cfm (8" duct)	\$500
RE600	Recirculating internal 600cfm	\$600
IN900	Internal 900cfm (10" duct)	\$1,200
IN1200	Internal 1200cfm (10" duct)	\$1,200

4. EXTERNAL MOTOR OPTIONS

Item #	Description:	Each
EMIL800	Inline blower only (8" duct)	\$905
EMIL800K	Inliner blower with duct accessories.	\$1,214
EMIL1200	Inline blower only (10" duct)	\$1,135
EMIL1200K	Inliner blower with duct accessories.	\$1,585
EMIL800 = 836cfm EMIL1200 = 1266cfm		
EM1400	External 1400cfm (10" duct)	\$1,200

5. *DUCT ACCESSORIES

Item #	Description:	Each
S8	Duct Silencer 8"	\$227
S10	Duct Silencer 10"	\$350
BD8	inline Damper 8"	\$44
BD10	inline Damper 10"	\$55
MC8	Mounting Clamps 8"Duct	\$38
MC10	Mounting Clamps 10"Duct	\$45

6. HOOD ACCESSORIES (The pricing below is for all standard sizes, colors and finishes. Custom sizes and colors are available for an extra charge)

PRICED	Description:	PRICE
Per Inch	Crown 1 1/2" High	\$10
Per Inch	Tiered Crown - 3 1/2" High	\$12
Per Inch	Lip Treatment	\$12
Per Inch	Pot Rail	\$15
Each	Banding - 1 1/2" Wide	\$120
Per Band	Rivets - 4" Spacing	\$200
	CUSTOM DUCT LOCATION	\$240

PRICED	HM1 Hammertone	PRICE
Per Inch	Crown 1 1/2" High	\$12
Per Inch	Tiered Crown 3 1/2" High	\$15
Per Inch	Lip Treatment	\$15
Each	Banding - 1 1/2" Wide	\$180

STANDARD COLORS
Over 200 powder coat colors in stock
STANDARD FINISHES
Stainless Steel: Brushed, Polished, Jitterbug
Copper: Brushed, Polished, Smoked
Brass: Brushed, Polished, Smoked
We also offer clear coats for an extra charge

FREIGHT

Zone Prices
The freight charge is determined by what zone your state is in. Please refer to the zone map for the freight charge to your area.
Oversized hoods are subject to additional pricing



PS2918 Professional Series Hood Information

Width 30", 36", 42", 48", 54", 60", 66"

Two vertical bands same finish included

Depth 24"

Rear Vent Only

Height 18"

3000K LED Lighting

4" tall lip (front only)

1. PS2918 STANDARD SIZE PRICING - BLOWER NOT INCLUDED

Model #	Powder Coat Non standard colors are an additional fee	Brushed Stainless 304 #4	Brushed Copper - Brushed Brass
PS2918-030	\$4,076	\$4,076	\$5,290
PS2918-036	\$4,243	\$4,243	\$5,528
PS2918-042	\$4,404	\$4,404	\$5,888
PS2918-048	\$5,097	\$5,097	\$6,913
PS2918-054	\$5,635	\$5,635	\$7,535
PS2918-060	\$6,050	\$6,050	\$7,873
PS2918-066	\$6,340	\$6,340	\$8,260

2. SPECIAL FINISH (OPTIONAL - ADD TO STEP 1)

Hammer Tone (HM1)	Polished (Mirror)	Smoked
\$1,115	\$1,115	\$1,115
\$1,115	\$1,115	\$1,115
\$1,115	\$1,115	\$1,115
\$1,115	\$1,115	\$1,115
\$1,595	\$1,355	\$1,235
\$1,595	\$1,355	\$1,235
\$1,595	\$1,355	\$1,235

3. INTERNAL MOTOR OPTIONS

Item #	Description:	Each
	No Blower	\$0
IN200	Internal 200cfm (7" duct)	\$500
IN325	Internal 325cfm (7" duct)	\$500
IN450	Internal 450cfm (7" duct)	\$500
IN600	Internal 600cfm (8" duct)	\$500
RE600	Recirculating internal 600cfm	\$600
IN900	Internal 900cfm (10" duct)	\$1,200
IN1200	Internal 1200cfm (10" duct)	\$1,200

4. EXTERNAL MOTOR OPTIONS

Item #	Description:	Each
EMIL800	Inline blower only (8" duct)	\$905
EMIL800K	Inliner blower with duct accessories.	\$1,214
EMIL1200	Inline blower only (10" duct)	\$1,135
EMIL1200K	Inliner blower with duct accessories.	\$1,585
EMIL800 = 836cfm EMIL1200 = 1266cfm		
EM1400	External 1400cfm (10" duct)	\$1,200

5. *DUCT ACCESSORIES

Item #	Description:	Each
S8	Duct Silencer 8"	\$227
S10	Duct Silencer 10"	\$350
BD8	inline Damper 8"	\$44
BD10	inline Damper 10"	\$55
MC8	Mounting Clamps 8"Duct	\$38
MC10	Mounting Clamps 10"Duct	\$45

6. HOOD ACCESSORIES (The pricing below is for all standard sizes, colors and finishes. Custom sizes and colors are available for an extra charge)

PRICED	Description:	PRICE
Per Inch	Crown 1 1/2" High	\$10
Per Inch	Tiered Crown - 3 1/2" High	\$12
Per Inch	Lip Treatment	\$12
Per Inch	Pot Rail	\$15
Each	Banding - 1 1/2" Wide	\$120
Per Band	Rivets - 4" Spacing	\$200
	CUSTOM DUCT LOCATION	\$240

PRICED	HM1 Hammertone	PRICE
Per Inch	Crown 1 1/2" High	\$12
Per Inch	Tiered Crown 3 1/2" High	\$15
Per Inch	Lip Treatment	\$15
Each	Banding - 1 1/2" Wide	\$180

STANDARD COLORS
Over 200 powder coat colors in stock
STANDARD FINISHES
Stainless Steel: Brushed, Polished, Jitterbug
Copper: Brushed, Polished, Smoked
Brass: Brushed, Polished, Smoked
We also offer clear coats for an extra charge

FREIGHT

Zone Prices
The freight charge is determined by what zone your state is in. Please refer to the zone map for the freight charge to your area.
Oversized hoods are subject to additional pricing



PS2930 Professional Series Hood Information

Width 30", 36", 42", 48", 54", 60", 66"	Two vertical bands same finish included
Depth 24"	Rear Vent Only
Height 30"	3000K LED Lighting
4" tall lip (front only)	

1. PS2930 STANDARD SIZE PRICING - BLOWER NOT INCLUDED

Model #	Powder Coat Non standard colors are an additional fee	Brushed Stainless 304 #4	Brushed Copper - Brushed Brass
PS2930-030	\$4,539	\$4,539	\$6,125
PS2930-036	\$4,565	\$4,565	\$6,344
PS2930-042	\$4,732	\$4,732	\$6,710
PS2930-048	\$5,442	\$5,442	\$7,797
PS2930-054	\$5,995	\$5,995	\$8,433
PS2930-060	\$6,409	\$6,409	\$8,661
PS2930-066	\$6,718	\$6,718	\$9,089

2. SPECIAL FINISH (OPTIONAL - ADD TO STEP 1)

Hammer Tone (HM1)	Polished (Mirror)	Smoked
\$1,115	\$1,115	\$1,115
\$1,115	\$1,115	\$1,115
\$1,115	\$1,115	\$1,115
\$1,115	\$1,115	\$1,115
\$1,595	\$1,355	\$1,235
\$1,595	\$1,355	\$1,235
\$1,595	\$1,355	\$1,235

3. INTERNAL MOTOR OPTIONS

Item #	Description:	Each
	No Blower	\$0
IN200	Internal 200cfm (7" duct)	\$500
IN325	Internal 325cfm (7" duct)	\$500
IN450	Internal 450cfm (7" duct)	\$500
IN600	Internal 600cfm (8" duct)	\$500
RE600	Recirculating internal 600cfm	\$600
IN900	Internal 900cfm (10" duct)	\$1,200
IN1200	Internal 1200cfm (10" duct)	\$1,200

4. EXTERNAL MOTOR OPTIONS

Item #	Description:	Each
EMIL800	Inline blower only (8" duct)	\$905
EMIL800K	Inliner blower with duct accessories.	\$1,214
EMIL1200	Inline blower only (10" duct)	\$1,135
EMIL1200K	Inliner blower with duct accessories.	\$1,585
EMIL800 = 836cfm EMIL1200 = 1266cfm		
EM1400	External 1400cfm (10" duct)	\$1,200

5. *DUCT ACCESSORIES

Item #	Description:	Each
S8	Duct Silencer 8"	\$227
S10	Duct Silencer 10"	\$350
BD8	inline Damper 8"	\$44
BD10	inline Damper 10"	\$55
MC8	Mounting Clamps 8"Duct	\$38
MC10	Mounting Clamps 10"Duct	\$45

6. HOOD ACCESSORIES (The pricing below is for all standard sizes, colors and finishes. Custom sizes and colors are available for an extra charge)

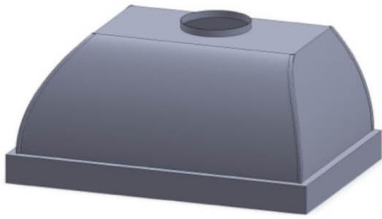
PRICED	Description:	PRICE
Per Inch	Crown 1 1/2" High	\$10
Per Inch	Tiered Crown - 3 1/2" High	\$12
Per Inch	Lip Treatment	\$12
Per Inch	Pot Rail	\$15
Each	Banding - 1 1/2" Wide	\$120
Per Band	Rivets - 4" Spacing	\$200
	CUSTOM DUCT LOCATION	\$240

PRICED	HM1 Hammertone	PRICE
Per Inch	Crown 1 1/2" High	\$12
Per Inch	Tiered Crown 3 1/2" High	\$15
Per Inch	Lip Treatment	\$15
Each	Banding - 1 1/2" Wide	\$180

STANDARD COLORS
Over 200 powder coat colors in stock
STANDARD FINISHES
Stainless Steel: Brushed, Polished, Jitterbug
Copper: Brushed, Polished, Smoked
Brass: Brushed, Polished, Smoked
We also offer clear coats for an extra charge

FREIGHT

Zone Prices
The freight charge is determined by what zone your state is in. Please refer to the zone map for the freight charge to your area.
Oversized hoods are subject to additional pricing



PS3118 Professional Series Hood Information

Width 30", 36", 42", 48", 54", 60", 66"	Top Width 12" Less than Bottom
Bottom Depth 24" - Top Depth 12"	Hood has Corner Seam Caps
Height 18"	3000K LED Lighting
4" tall lip	

1. PS3118 STANDARD SIZE PRICING - BLOWER NOT INCLUDED

Model #	Powder Coat Non standard colors are an additional fee	Brushed Stainless 304 #4	Brushed Copper - Brushed Brass
PS3118-030	\$4,624	\$4,624	\$7,009
PS3118-036	\$4,727	\$4,727	\$7,281
PS3118-042	\$4,829	\$4,829	\$7,498
PS3118-048	\$5,621	\$5,621	\$8,640
PS3118-054	\$6,231	\$6,231	\$9,237
PS3118-060	\$6,523	\$6,523	\$9,536
PS3118-066	\$6,839	\$6,839	\$10,010

2. SPECIAL FINISH (OPTIONAL - ADD TO STEP 1)

Hammer Tone (HM1)	Polished (Mirror)	Smoked
\$1,115	\$1,115	\$1,115
\$1,115	\$1,115	\$1,115
\$1,115	\$1,115	\$1,115
\$1,115	\$1,115	\$1,115
\$1,595	\$1,355	\$1,235
\$1,595	\$1,355	\$1,235
\$1,595	\$1,355	\$1,235

3. INTERNAL MOTOR OPTIONS

Item #	Description:	Each
	No Blower	\$0
IN200	Internal 200cfm (7" duct)	\$500
IN325	Internal 325cfm (7" duct)	\$500
IN450	Internal 450cfm (7" duct)	\$500
IN600	Internal 600cfm (8" duct)	\$500
RE600	Recirculating internal 600cfm	\$600
IN900	Internal 900cfm (10" duct)	\$1,200
IN1200	Internal 1200cfm (10" duct)	\$1,200

4. EXTERNAL MOTOR OPTIONS

Item #	Description:	Each
EMIL800	Inline blower only (8" duct)	\$905
EMIL800K	Inliner blower with duct accessories.	\$1,214
EMIL1200	Inline blower only (10" duct)	\$1,135
EMIL1200K	Inliner blower with duct accessories.	\$1,585
EMIL800 = 836cfm EMIL1200 = 1266cfm		
EM1400	External 1400cfm (10" duct)	\$1,200

5. *DUCT ACCESSORIES

Item #	Description:	Each
S8	Duct Silencer 8"	\$227
S10	Duct Silencer 10"	\$350
BD8	inline Damper 8"	\$44
BD10	inline Damper 10"	\$55
MC8	Mounting Clamps 8"Duct	\$38
MC10	Mounting Clamps 10"Duct	\$45

6. HOOD ACCESSORIES (The pricing below is for all standard sizes, colors and finishes. Custom sizes and colors are available for an extra charge)

PRICED	Description:	PRICE
Per Inch	Crown 1 1/2" High	\$10
Per Inch	Tiered Crown - 3 1/2" High	\$12
Per Inch	Lip Treatment	\$12
Per Inch	Pot Rail	\$15
Each	Banding - 1 1/2" Wide	\$120
Per Band	Rivets - 4" Spacing	\$200
	CUSTOM DUCT LOCATION	\$240

PRICED	HM1 Hammertone	PRICE
Per Inch	Crown 1 1/2" High	\$12
Per Inch	Tiered Crown 3 1/2" High	\$15
Per Inch	Lip Treatment	\$15
Each	Banding - 1 1/2" Wide	\$180

STANDARD COLORS
Over 200 powder coat colors in stock
STANDARD FINISHES
Stainless Steel: Brushed, Polished, Jitterbug
Copper: Brushed, Polished, Smoked
Brass: Brushed, Polished, Smoked
We also offer clear coats for an extra charge

FREIGHT

Zone Prices
The freight charge is determined by what zone your state is in. Please refer to the zone map for the freight charge to your area.
Oversized hoods are subject to additional pricing



PS3130 Professional Series Hood Information

Width 30", 36", 42", 48", 54", 60", 66"	Top Width 12" Less Than Bottom
Depth 24"	Hood has Corner Seam Caps
Height 30"	3000K LED Lighting
4" tall lip	

1. PS3130 STANDARD SIZE PRICING - BLOWER NOT INCLUDED

Model #	Powder Coat Non standard colors are an additional fee	Brushed Stainless 304 #4	Brushed Copper - Brushed Brass
PS3130-030	\$4,899	\$4,899	\$7,436
PS3130-036	\$5,008	\$5,008	\$7,725
PS3130-042	\$5,117	\$5,117	\$7,956
PS3130-048	\$5,946	\$5,946	\$9,158
PS3130-054	\$6,595	\$6,595	\$9,793
PS3130-060	\$6,906	\$6,906	\$10,111
PS3130-066	\$7,242	\$7,242	\$10,615

2. SPECIAL FINISH (OPTIONAL - ADD TO STEP 1)

Hammer Tone (HM1)	Polished (Mirror)	Smoked
\$1,115	\$1,115	\$1,115
\$1,115	\$1,115	\$1,115
\$1,115	\$1,115	\$1,115
\$1,115	\$1,115	\$1,115
\$1,595	\$1,355	\$1,235
\$1,595	\$1,355	\$1,235
\$1,595	\$1,355	\$1,235

3. INTERNAL MOTOR OPTIONS

Item #	Description:	Each
	No Blower	\$0
IN200	Internal 200cfm (7" duct)	\$500
IN325	Internal 325cfm (7" duct)	\$500
IN450	Internal 450cfm (7" duct)	\$500
IN600	Internal 600cfm (8" duct)	\$500
RE600	Recirculating internal 600cfm	\$600
IN900	Internal 900cfm (10" duct)	\$1,200
IN1200	Internal 1200cfm (10" duct)	\$1,200

4. EXTERNAL MOTOR OPTIONS

Item #	Description:	Each
EMIL800	Inline blower only (8" duct)	\$905
EMIL800K	Inliner blower with duct accessories.	\$1,214
EMIL1200	Inline blower only (10" duct)	\$1,135
EMIL1200K	Inliner blower with duct accessories.	\$1,585
EMIL800 = 836cfm EMIL1200 = 1266cfm		
EM1400	External 1400cfm (10" duct)	\$1,200

5. *DUCT ACCESSORIES

Item #	Description:	Each
S8	Duct Silencer 8"	\$227
S10	Duct Silencer 10"	\$350
BD8	inline Damper 8"	\$44
BD10	inline Damper 10"	\$55
MC8	Mounting Clamps 8"Duct	\$38
MC10	Mounting Clamps 10"Duct	\$45

6. HOOD ACCESSORIES (The pricing below is for all standard sizes, colors and finishes. Custom sizes and colors are available for an extra charge)

PRICED	Description:	PRICE
Per Inch	Crown 1 1/2" High	\$10
Per Inch	Tiered Crown - 3 1/2" High	\$12
Per Inch	Lip Treatment	\$12
Per Inch	Pot Rail	\$15
Each	Banding - 1 1/2" Wide	\$120
Per Band	Rivets - 4" Spacing	\$200
	CUSTOM DUCT LOCATION	\$240

PRICED	HM1 Hammertone	PRICE
Per Inch	Crown 1 1/2" High	\$12
Per Inch	Tiered Crown 3 1/2" High	\$15
Per Inch	Lip Treatment	\$15
Each	Banding - 1 1/2" Wide	\$180

STANDARD COLORS
Over 200 powder coat colors in stock
STANDARD FINISHES
Stainless Steel: Brushed, Polished, Jitterbug
Copper: Brushed, Polished, Smoked
Brass: Brushed, Polished, Smoked
We also offer clear coats for an extra charge

FREIGHT

Zone Prices
The freight charge is determined by what zone your state is in. Please refer to the zone map for the freight charge to your area.
Oversized hoods are subject to additional pricing



PS3230 Professional Series Hood Information

Width 30", 36", 42", 48", 54", 60", 66"

Top Width is 18" Less Than Bottom

Bottom Depth 24" - 12" top Depth

Hood has Corner Seam Caps

Height 30"

3000K LED Lighting

4" tall lip

1. PS3230 STANDARD SIZE PRICING - BLOWER NOT INCLUDED

Model #	Powder Coat Non standard colors are an additional fee	Brushed Stainless 304 #4	Brushed Copper - Brushed Brass
PS3230-030	\$5,522	\$5,522	\$8,405
PS3230-036	\$5,646	\$5,646	\$8,734
PS3230-042	\$5,770	\$5,770	\$8,997
PS3230-048	\$6,686	\$6,686	\$10,335
PS3230-054	\$7,423	\$7,423	\$11,057
PS3230-060	\$7,777	\$7,777	\$11,418
PS3230-066	\$8,158	\$8,158	\$11,991

2. SPECIAL FINISH (OPTIONAL - ADD TO STEP 1)

Hammer Tone (HM1)	Polished (Mirror)	Smoked
\$1,115	\$1,115	\$1,115
\$1,115	\$1,115	\$1,115
\$1,115	\$1,115	\$1,115
\$1,115	\$1,115	\$1,115
\$1,595	\$1,355	\$1,235
\$1,595	\$1,355	\$1,235
\$1,595	\$1,355	\$1,235

3. INTERNAL MOTOR OPTIONS

Item #	Description:	Each
	No Blower	\$0
IN200	Internal 200cfm (7" duct)	\$500
IN325	Internal 325cfm (7" duct)	\$500
IN450	Internal 450cfm (7" duct)	\$500
IN600	Internal 600cfm (8" duct)	\$500
RE600	Recirculating internal 600cfm	\$600
IN900	Internal 900cfm (10" duct)	\$1,200
IN1200	Internal 1200cfm (10" duct)	\$1,200

4. EXTERNAL MOTOR OPTIONS

Item #	Description:	Each
EMIL800	Inline blower only (8" duct)	\$905
EMIL800K	Inliner blower with duct accessories.	\$1,214
EMIL1200	Inline blower only (10" duct)	\$1,135
EMIL1200K	Inliner blower with duct accessories.	\$1,585
EMIL800 = 836cfm EMIL1200 = 1266cfm		
EM1400	External 1400cfm (10" duct)	\$1,200

5. *DUCT ACCESSORIES

Item #	Description:	Each
S8	Duct Silencer 8"	\$227
S10	Duct Silencer 10"	\$350
BD8	inline Damper 8"	\$44
BD10	inline Damper 10"	\$55
MC8	Mounting Clamps 8"Duct	\$38
MC10	Mounting Clamps 10"Duct	\$45

6. HOOD ACCESSORIES (The pricing below is for all standard sizes, colors and finishes. Custom sizes and colors are available for an extra charge)

PRICED	Description:	PRICE
Per Inch	Crown 1 1/2" High	\$10
Per Inch	Tiered Crown - 3 1/2" High	\$12
Per Inch	Lip Treatment	\$12
Per Inch	Pot Rail	\$15
Each	Banding - 1 1/2" Wide	\$120
Per Band	Rivets - 4" Spacing	\$200
	CUSTOM DUCT LOCATION	\$240

PRICED	HM1 Hammertone	PRICE
Per Inch	Crown 1 1/2" High	\$12
Per Inch	Tiered Crown 3 1/2" High	\$15
Per Inch	Lip Treatment	\$15
Each	Banding - 1 1/2" Wide	\$180

STANDARD COLORS
Over 200 powder coat colors in stock
STANDARD FINISHES
Stainless Steel: Brushed, Polished, Jitterbug
Copper: Brushed, Polished, Smoked
Brass: Brushed, Polished, Smoked
We also offer clear coats for an extra charge

FREIGHT

Zone Prices
The freight charge is determined by what zone your state is in. Please refer to the zone map for the freight charge to your area.
Oversized hoods are subject to additional pricing



PS3342 Professional Series Hood Information

Width 30", 36", 42", 48", 54", 60", 66"	Vertical Bands and Corner Rivets Included
Bottom Depth 24" - 14" top Depth	Can be Made Without Quilted Pattern
Height 42"	Hood has Corner Seam Caps
6" Tall Lower Lip - 7" tall Top Crown	3000K LED Lighting

1. PS3342 STANDARD SIZE PRICING - BLOWER NOT INCLUDED

Model #	Powder Coat Non standard colors are an additional fee	Brushed Stainless 304 #4	Brushed Copper - Brushed Brass
PS3342-030	\$5,511	\$5,511	\$7,887
PS3342-036	\$5,787	\$5,787	\$8,337
PS3342-042	\$6,018	\$6,018	\$8,941
PS3342-048	\$6,699	\$6,699	\$10,235
PS3342-054	\$7,348	\$7,348	\$10,885
PS3342-060	\$7,659	\$7,659	\$11,195
PS3342-066	\$8,033	\$8,033	\$11,756

2. SPECIAL FINISH (OPTIONAL - ADD TO STEP 1)

Hammer Tone (HM1)	Polished (Mirror)	Smoked
\$1,115	\$1,115	\$1,115
\$1,115	\$1,115	\$1,115
\$1,115	\$1,115	\$1,115
\$1,115	\$1,115	\$1,115
\$1,595	\$1,355	\$1,235
\$1,595	\$1,355	\$1,235
\$1,595	\$1,355	\$1,235

3. INTERNAL MOTOR OPTIONS

Item #	Description:	Each
	No Blower	\$0
IN200	Internal 200cfm (7" duct)	\$500
IN325	Internal 325cfm (7" duct)	\$500
IN450	Internal 450cfm (7" duct)	\$500
IN600	Internal 600cfm (8" duct)	\$500
RE600	Recirculating internal 600cfm	\$600
IN900	Internal 900cfm (10" duct)	\$1,200
IN1200	Internal 1200cfm (10" duct)	\$1,200

4. EXTERNAL MOTOR OPTIONS

Item #	Description:	Each
EMIL800	Inline blower only (8" duct)	\$905
EMIL800K	Inliner blower with duct accessories.	\$1,214
EMIL1200	Inline blower only (10" duct)	\$1,135
EMIL1200K	Inliner blower with duct accessories.	\$1,585
EMIL800 = 836cfm EMIL1200 = 1266cfm		
EM1400	External 1400cfm (10" duct)	\$1,200

5. *DUCT ACCESSORIES

Item #	Description:	Each
S8	Duct Silencer 8"	\$227
S10	Duct Silencer 10"	\$350
BD8	inline Damper 8"	\$44
BD10	inline Damper 10"	\$55
MC8	Mounting Clamps 8"Duct	\$38
MC10	Mounting Clamps 10"Duct	\$45

6. HOOD ACCESSORIES (The pricing below is for all standard sizes, colors and finishes. Custom sizes and colors are available for an extra charge)

PRICED	Description:	PRICE
Per Inch	Crown 1 1/2" High	\$10
Per Inch	Tiered Crown - 3 1/2" High	\$12
Per Inch	Lip Treatment	\$12
Per Inch	Pot Rail	\$15
Each	Banding - 1 1/2" Wide	\$120
Per Band	Rivets - 4" Spacing	\$200
	CUSTOM DUCT LOCATION	\$240

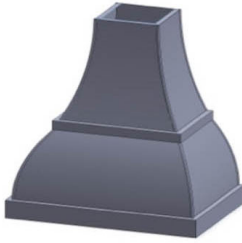
PRICED	HM1 Hammertone	PRICE
Per Inch	Crown 1 1/2" High	\$12
Per Inch	Tiered Crown 3 1/2" High	\$15
Per Inch	Lip Treatment	\$15
Each	Banding - 1 1/2" Wide	\$180

STANDARD COLORS
Over 200 powder coat colors in stock
STANDARD FINISHES
Stainless Steel: Brushed, Polished, Jitterbug
Copper: Brushed, Polished, Smoked
Brass: Brushed, Polished, Smoked
We also offer clear coats for an extra charge

FREIGHT

Zone Prices
The freight charge is determined by what zone your state is in. Please refer to the zone map for the freight charge to your area.
Oversized hoods are subject to additional pricing

Clipped corners available upon request. Please contact us for more information.



PS3542 Professional Series Hood Information

Width 30", 36", 42", 48", 54", 60", 66"	Hood has Corner Seam Caps
Bottom Depth 24" - Top Depth 12"	3000K LED Lighting
Height 42"	
4" tall lip - 2" center trim	

1. PS3542 STANDARD SIZE PRICING - BLOWER NOT INCLUDED

Model #	Powder Coat Non standard colors are an additional fee	Brushed Stainless 304 #4	Brushed Copper - Brushed Brass
PS3542-030	\$7,933	\$7,933	\$10,816
PS3542-036	\$8,057	\$8,057	\$11,145
PS3542-042	\$8,181	\$8,181	\$11,407
PS3542-048	\$9,103	\$9,103	\$12,753
PS3542-054	\$9,841	\$9,841	\$13,475
PS3542-060	\$10,194	\$10,194	\$13,836
PS3542-066	\$10,575	\$10,575	\$14,409

2. SPECIAL FINISH (OPTIONAL - ADD TO STEP 1)

Hammer Tone (HM1)	Polished (Mirror)	Smoked
\$1,115	\$1,115	\$1,115
\$1,115	\$1,115	\$1,115
\$1,115	\$1,115	\$1,115
\$1,115	\$1,115	\$1,115
\$1,595	\$1,355	\$1,235
\$1,595	\$1,355	\$1,235
\$1,595	\$1,355	\$1,235

3. INTERNAL MOTOR OPTIONS

Item #	Description:	Each
	No Blower	\$0
IN200	Internal 200cfm (7" duct)	\$500
IN325	Internal 325cfm (7" duct)	\$500
IN450	Internal 450cfm (7" duct)	\$500
IN600	Internal 600cfm (8" duct)	\$500
RE600	Recirculating internal 600cfm	\$600
IN900	Internal 900cfm (10" duct)	\$1,200
IN1200	Internal 1200cfm (10" duct)	\$1,200

4. EXTERNAL MOTOR OPTIONS

Item #	Description:	Each
EMIL800	Inline blower only (8" duct)	\$905
EMIL800	Inliner blower with duct accessories.	\$1,214
EMIL1200	Inline blower only (10" duct)	\$1,135
EMIL1200	Inliner blower with duct accessories.	\$1,585
EMIL800 = 836cfm EMIL1200 = 1266cfm		
EM1400	External 1400cfm (10" duct)	\$1,200

5. *DUCT ACCESSORIES

Item #	Description:	Each
S8	Duct Silencer 8"	\$227
S10	Duct Silencer 10"	\$350
BD8	inline Damper 8"	\$44
BD10	inline Damper 10"	\$55
MC8	Mounting Clamps 8"Duct	\$38
MC10	Mounting Clamps 10"Duct	\$45

6. HOOD ACCESSORIES (The pricing below is for all standard sizes, colors and finishes. Custom sizes and colors are available for an extra charge)

PRICED	Description:	PRICE
Per Inch	Crown 1 1/2" High	\$10
Per Inch	Tiered Crown - 3 1/2" High	\$12
Per Inch	Lip Treatment	\$12
Per Inch	Pot Rail	\$15
Each	Banding - 1 1/2" Wide	\$120
Per Band	Rivets - 4" Spacing	\$200
	CUSTOM DUCT LOCATION	\$240

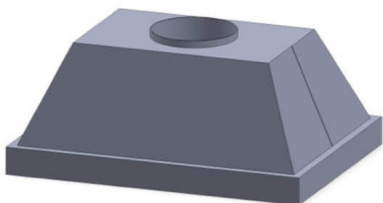
PRICED	HM1 Hammertone	PRICE
Per Inch	Crown 1 1/2" High	\$12
Per Inch	Tiered Crown 3 1/2" High	\$15
Per Inch	Lip Treatment	\$15
Each	Banding - 1 1/2" Wide	\$180

STANDARD COLORS	
Over 200 powder coat colors in stock	
STANDARD FINISHES	
Stainless Steel: Brushed, Polished, Jitterbug	
Copper: Brushed, Polished, Smoked	
Brass: Brushed, Polished, Smoked	
We also offer clear coats for an extra charge	

FREIGHT

Zone Prices	
The freight charge is determined by what zone your state is in. Please refer to the zone map for the freight charge to your area.	
Oversized hoods are subject to additional pricing	

PS1418 Professional Series Hood Information



Width 30", 36", 42", 48", 54", 60", 66"	Top Width 12" Less Than Bottom
Bottom Depth 27" - Top Depth 15"	3000K LED Lighting
Height 18"	
4" tall lip	

1. PS1418 STANDARD SIZE PRICING - BLOWER NOT INCLUDED

Model #	Powder Coat Non standard colors are an additional fee	Brushed Stainless 304 #4	Brushed Copper - Brushed Brass
PS1418-030	\$3,053	\$3,053	\$5,035
PS1418-036	\$3,206	\$3,206	\$5,325
PS1418-042	\$3,385	\$3,385	\$5,743
PS1418-048	\$4,011	\$4,011	\$6,813
PS1418-054	\$4,658	\$4,658	\$7,462
PS1418-060	\$4,971	\$4,971	\$7,776
PS1418-066	\$5,420	\$5,420	\$8,226

2. SPECIAL FINISH (OPTIONAL - ADD TO STEP 1)

Hammer Tone (HM1)	Polished (Mirror)	Smoked
\$1,115	\$1,115	\$1,115
\$1,115	\$1,115	\$1,115
\$1,115	\$1,115	\$1,115
\$1,115	\$1,115	\$1,115
\$1,595	\$1,355	\$1,235
\$1,595	\$1,355	\$1,235
\$1,595	\$1,355	\$1,235

3. INTERNAL MOTOR OPTIONS

Item #	Description:	Each
	No Blower	\$0
IN200	Internal 200cfm (7" duct)	\$500
IN325	Internal 325cfm (7" duct)	\$500
IN450	Internal 450cfm (7" duct)	\$500
IN600	Internal 600cfm (8" duct)	\$500
RE600	Recirculating internal 600cfm	\$600
IN900	Internal 900cfm (10" duct)	\$1,200
IN1200	Internal 1200cfm (10" duct)	\$1,200

4. EXTERNAL MOTOR OPTIONS

Item #	Description:	Each
EMIL800	Inline blower only (8" duct)	\$905
EMIL800K	Inliner blower with duct accessories.	\$1,214
EMIL1200	Inline blower only (10" duct)	\$1,135
EMIL1200K	Inliner blower with duct accessories.	\$1,585
EMIL800 = 836cfm EMIL1200 = 1266cfm		
EM1400	External 1400cfm (10" duct)	\$1,200

5. *DUCT ACCESSORIES

Item #	Description:	Each
S8	Duct Silencer 8"	\$227
S10	Duct Silencer 10"	\$350
BD8	inline Damper 8"	\$44
BD10	inline Damper 10"	\$55
MC8	Mounting Clamps 8"Duct	\$38
MC10	Mounting Clamps 10"Duct	\$45

6. HOOD ACCESSORIES (The pricing below is for all standard sizes, colors and finishes. Custom sizes and colors are available for an extra charge)

PRICED	Description:	PRICE
Per Inch	Crown 1 1/2" High	\$10
Per Inch	Tiered Crown - 3 1/2" High	\$12
Per Inch	Lip Treatment	\$12
Per Inch	Pot Rail	\$15
Each	Banding - 1 1/2" Wide	\$120
Per Band	Rivets - 4" Spacing	\$200
	CUSTOM DUCT LOCATION	\$240

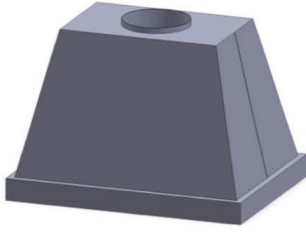
PRICED	HM1 Hammertone	PRICE
Per Inch	Crown 1 1/2" High	\$12
Per Inch	Tiered Crown 3 1/2" High	\$15
Per Inch	Lip Treatment	\$15
Each	Banding - 1 1/2" Wide	\$180

STANDARD COLORS
Over 200 powder coat colors in stock
STANDARD FINISHES
Stainless Steel: Brushed, Polished, Jitterbug
Copper: Brushed, Polished, Smoked
Brass: Brushed, Polished, Smoked
We also offer clear coats for an extra charge

FREIGHT

Zone Prices
The freight charge is determined by what zone your state is in. Please refer to the zone map for the freight charge to your area.
Oversized hoods are subject to additional pricing

Standing bands available upon request. Please contact us for more information.



PS1430 Professional Series Hood Information

Width 30", 36", 42", 48", 54", 60", 66"

Top Width is 12" Less Than Bottom

Bottom Depth 27" - 15" top Depth

3000K LED Lighting

Height 30"

4" tall lip

1. PS1430 STANDARD SIZE PRICING - BLOWER NOT INCLUDED

Model #	Powder Coat Non standard colors are an additional fee	Brushed Stainless 304 #4	Brushed Copper - Brushed Brass
PS1430-030	\$3,628	\$3,628	\$6,240
PS14130-036	\$3,903	\$3,903	\$6,615
PS1430-042	\$4,118	\$4,118	\$7,201
PS1430-048	\$4,847	\$4,847	\$8,553
PS1430-054	\$5,490	\$5,490	\$9,196
PS1430-060	\$5,804	\$5,804	\$9,575
PS1430-066	\$6,254	\$6,254	\$10,025

2. SPECIAL FINISH (OPTIONAL - ADD TO STEP 1)

Hammer Tone (HM1)	Polished (Mirror)	Smoked
\$1,115	\$1,115	\$1,115
\$1,115	\$1,115	\$1,115
\$1,115	\$1,115	\$1,115
\$1,115	\$1,115	\$1,115
\$1,595	\$1,355	\$1,235
\$1,595	\$1,355	\$1,235
\$1,595	\$1,355	\$1,235

3. INTERNAL MOTOR OPTIONS

Item #	Description:	Each
	No Blower	\$0
IN200	Internal 200cfm (7" duct)	\$500
IN325	Internal 325cfm (7" duct)	\$500
IN450	Internal 450cfm (7" duct)	\$500
IN600	Internal 600cfm (8" duct)	\$500
RE600	Recirculating internal 600cfm	\$600
IN900	Internal 900cfm (10" duct)	\$1,200
IN1200	Internal 1200cfm (10" duct)	\$1,200

4. EXTERNAL MOTOR OPTIONS

Item #	Description:	Each
EMIL800	Inline blower only (8" duct)	\$905
EMIL800K	Inliner blower with duct accessories.	\$1,214
EMIL1200	Inline blower only (10" duct)	\$1,135
EMIL1200K	Inliner blower with duct accessories.	\$1,585
EMIL800 = 836cfm EMIL1200 = 1266cfm		
EM1400	External 1400cfm (10" duct)	\$1,200

5. *DUCT ACCESSORIES

Item #	Description:	Each
S8	Duct Silencer 8"	\$227
S10	Duct Silencer 10"	\$350
BD8	inline Damper 8"	\$44
BD10	inline Damper 10"	\$55
MC8	Mounting Clamps 8"Duct	\$38
MC10	Mounting Clamps 10"Duct	\$45

6. HOOD ACCESSORIES (The pricing below is for all standard sizes, colors and finishes. Custom sizes and colors are available for an extra charge)

PRICED	Description:	PRICE
Per Inch	Crown 1 1/2" High	\$10
Per Inch	Tiered Crown - 3 1/2" High	\$12
Per Inch	Lip Treatment	\$12
Per Inch	Pot Rail	\$15
Each	Banding - 1 1/2" Wide	\$120
Per Band	Rivets - 4" Spacing	\$200
	CUSTOM DUCT LOCATION	\$240

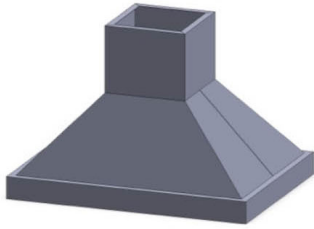
PRICED	HM1 Hammertone	PRICE
Per Inch	Crown 1 1/2" High	\$12
Per Inch	Tiered Crown 3 1/2" High	\$15
Per Inch	Lip Treatment	\$15
Each	Banding - 1 1/2" Wide	\$180

STANDARD COLORS
Over 200 powder coat colors in stock
STANDARD FINISHES
Stainless Steel: Brushed, Polished, Jitterbug
Copper: Brushed, Polished, Smoked
Brass: Brushed, Polished, Smoked
We also offer clear coats for an extra charge

FREIGHT

Zone Prices
The freight charge is determined by what zone your state is in. Please refer to the zone map for the freight charge to your area.
Oversized hoods are subject to additional pricing

Standing bands available upon request. Please contact us for more information.



PS1830 Professional Series Hood Information

Width 30", 36", 42", 48", 54", 60", 66"	Duct Cover is 12" x 12"
Bottom Depth 27"	3000K LED Lighting
Height 30"	
4" tall lip - DC is 12" tall	

1. PS1830 STANDARD SIZE PRICING - BLOWER NOT INCLUDED

Model #	Powder Coat Non standard colors are an additional fee	Brushed Stainless 304 #4	Brushed Copper - Brushed Brass
PS1830-030	\$4,178	\$4,178	\$6,326
PS1830-036	\$4,322	\$4,322	\$6,436
PS1830-042	\$4,387	\$4,387	\$6,699
PS1830-048	\$5,034	\$5,034	\$7,783
PS1830-054	\$5,477	\$5,477	\$8,226
PS1830-060	\$5,875	\$5,875	\$8,804
PS1830-066	\$6,325	\$6,325	\$9,254

2. SPECIAL FINISH (OPTIONAL - ADD TO STEP 1)

Hammer Tone (HM1)	Polished (Mirror)	Smoked
\$1,115	\$1,115	\$1,115
\$1,115	\$1,115	\$1,115
\$1,115	\$1,115	\$1,115
\$1,115	\$1,115	\$1,115
\$1,595	\$1,355	\$1,235
\$1,595	\$1,355	\$1,235
\$1,595	\$1,355	\$1,235

3. INTERNAL MOTOR OPTIONS

Item #	Description:	Each
	No Blower	\$0
IN200	Internal 200cfm (7" duct)	\$500
IN325	Internal 325cfm (7" duct)	\$500
IN450	Internal 450cfm (7" duct)	\$500
IN600	Internal 600cfm (8" duct)	\$500
RE600	Recirculating internal 600cfm	\$600
IN900	Internal 900cfm (10" duct)	\$1,200
IN1200	Internal 1200cfm (10" duct)	\$1,200

4. EXTERNAL MOTOR OPTIONS

Item #	Description:	Each
EMIL800	Inline blower only (8" duct)	\$905
EMIL800K	Inliner blower with duct accessories.	\$1,214
EMIL1200	Inline blower only (10" duct)	\$1,135
EMIL1200K	Inliner blower with duct accessories.	\$1,585
EMIL800 = 836cfm EMIL1200 = 1266cfm		
EM1400	External 1400cfm (10" duct)	\$1,200

5. *DUCT ACCESSORIES

Item #	Description:	Each
S8	Duct Silencer 8"	\$227
S10	Duct Silencer 10"	\$350
BD8	inline Damper 8"	\$44
BD10	inline Damper 10"	\$55
MC8	Mounting Clamps 8"Duct	\$38
MC10	Mounting Clamps 10"Duct	\$45

6. HOOD ACCESSORIES (The pricing below is for all standard sizes, colors and finishes. Custom sizes and colors are available for an extra charge)

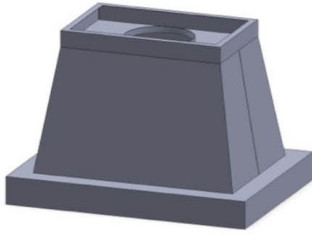
PRICED	Description:	PRICE
Per Inch	Crown 1 1/2" High	\$10
Per Inch	Tiered Crown - 3 1/2" High	\$12
Per Inch	Lip Treatment	\$12
Per Inch	Pot Rail	\$15
Each	Banding - 1 1/2" Wide	\$120
Per Band	Rivets - 4" Spacing	\$200
	CUSTOM DUCT LOCATION	\$240

PRICED	HM1 Hammertone	PRICE
Per Inch	Crown 1 1/2" High	\$12
Per Inch	Tiered Crown 3 1/2" High	\$15
Per Inch	Lip Treatment	\$15
Each	Banding - 1 1/2" Wide	\$180

STANDARD COLORS
Over 200 powder coat colors in stock
STANDARD FINISHES
Stainless Steel: Brushed, Polished, Jitterbug
Copper: Brushed, Polished, Smoked
Brass: Brushed, Polished, Smoked
We also offer clear coats for an extra charge

FREIGHT

Zone Prices
The freight charge is determined by what zone your state is in. Please refer to the zone map for the freight charge to your area.
Oversized hoods are subject to additional pricing



PS2730 Professional Series Hood Information

Width 30", 36", 42", 48", 54", 60", 66"

Top Width is 12" Less Than Bottom

Bottom Depth 27" - Top Depth 15"

3000K LED Lighting

Height 30"

5" tall lip - 3" tall DC

1. PS2730 STANDARD SIZE PRICING - BLOWER NOT INCLUDED

Model #	Powder Coat Non standard colors are an additional fee	Brushed Stainless 304 #4	Brushed Copper - Brushed Brass
PS2730-030	\$3,630	\$3,630	\$6,239
PS2730-036	\$3,921	\$3,921	\$6,609
PS2730-042	\$4,118	\$4,118	\$7,201
PS2730-048	\$4,847	\$4,847	\$8,556
PS2730-054	\$4,719	\$4,719	\$9,196
PS2730-060	\$5,727	\$5,727	\$9,498
PS2730-066	\$6,177	\$6,177	\$9,941

2. SPECIAL FINISH (OPTIONAL - ADD TO STEP 1)

Hammer Tone (HM1)	Polished (Mirror)	Smoked
\$1,115	\$1,115	\$1,115
\$1,115	\$1,115	\$1,115
\$1,115	\$1,115	\$1,115
\$1,115	\$1,115	\$1,115
\$1,595	\$1,355	\$1,235
\$1,595	\$1,355	\$1,235
\$1,595	\$1,355	\$1,235

3. INTERNAL MOTOR OPTIONS

Item #	Description:	Each
	No Blower	\$0
IN200	Internal 200cfm (7" duct)	\$500
IN325	Internal 325cfm (7" duct)	\$500
IN450	Internal 450cfm (7" duct)	\$500
IN600	Internal 600cfm (8" duct)	\$500
RE600	Recirculating internal 600cfm	\$600
IN900	Internal 900cfm (10" duct)	\$1,200
IN1200	Internal 1200cfm (10" duct)	\$1,200

4. EXTERNAL MOTOR OPTIONS

Item #	Description:	Each
EMIL800	Inline blower only (8" duct)	\$905
EMIL800K	Inliner blower with duct accessories.	\$1,214
EMIL1200	Inline blower only (10" duct)	\$1,135
EMIL1200K	Inliner blower with duct accessories.	\$1,585
EMIL800 = 836cfm EMIL1200 = 1266cfm		
EM1400	External 1400cfm (10" duct)	\$1,200

5. *DUCT ACCESSORIES

Item #	Description:	Each
S8	Duct Silencer 8"	\$227
S10	Duct Silencer 10"	\$350
BD8	inline Damper 8"	\$44
BD10	inline Damper 10"	\$55
MC8	Mounting Clamps 8"Duct	\$38
MC10	Mounting Clamps 10"Duct	\$45

6. HOOD ACCESSORIES (The pricing below is for all standard sizes, colors and finishes. Custom sizes and colors are available for an extra charge)

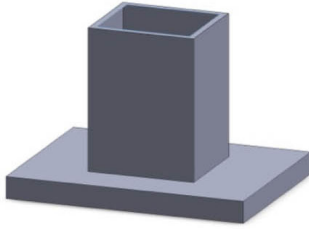
PRICED	Description:	PRICE
Per Inch	Crown 1 1/2" High	\$10
Per Inch	Tiered Crown - 3 1/2" High	\$12
Per Inch	Lip Treatment	\$12
Per Inch	Pot Rail	\$15
Each	Banding - 1 1/2" Wide	\$120
Per Band	Rivets - 4" Spacing	\$200
	CUSTOM DUCT LOCATION	\$240

PRICED	HM1 Hammertone	PRICE
Per Inch	Crown 1 1/2" High	\$12
Per Inch	Tiered Crown 3 1/2" High	\$15
Per Inch	Lip Treatment	\$15
Each	Banding - 1 1/2" Wide	\$180

STANDARD COLORS
Over 200 powder coat colors in stock
STANDARD FINISHES
Stainless Steel: Brushed, Polished, Jitterbug
Copper: Brushed, Polished, Smoked
Brass: Brushed, Polished, Smoked
We also offer clear coats for an extra charge

FREIGHT

Zone Prices
The freight charge is determined by what zone your state is in. Please refer to the zone map for the freight charge to your area.
Oversized hoods are subject to additional pricing



PMI1630 Professional Series Hood Information

Width 30", 36", 42", 48", 54", 60", 66"
 Bottom Depth 27" - DC Depth 14"
 Height 30"
 4" tall Canopy

1200cfm Has 24" Wide Duct Cover
 600cfm or Less Has 16" Wide Duct Cover
 External Blower Has 16" Wide Duct Cover
 Standard Mesh Filters
 3000K LED Lighting

1. PMI1630 STANDARD SIZE PRICING - BLOWER NOT INCLUDED

Model #	Powder Coat Non standard colors are an additional fee	Brushed Stainless 304 #4	Brushed Copper - Brushed Brass
PMI1630-030	\$2,756	\$2,756	\$6,269
PMI1630-036	\$2,768	\$2,768	\$6,281
PMI1630-042	\$2,822	\$2,822	\$6,335
PMI1630-048	\$3,241	\$3,241	\$7,018
PMI1630-054	\$3,884	\$3,884	\$7,654
PMI1630-060	\$4,199	\$4,199	\$7,969
PMI1630-066	\$4,648	\$4,648	\$8,419

2. SPECIAL FINISH (OPTIONAL - ADD TO STEP 1)

Hammer Tone (HM1)	Polished (Mirror)	Smoked
\$1,115	\$1,115	\$1,115
\$1,115	\$1,115	\$1,115
\$1,115	\$1,115	\$1,115
\$1,115	\$1,115	\$1,115
\$1,595	\$1,355	\$1,235
\$1,595	\$1,355	\$1,235
\$1,595	\$1,355	\$1,235

3. INTERNAL MOTOR OPTIONS

Item #	Description:	Each
	No Blower	\$0
IN200	Internal 200cfm (7" duct)	\$500
IN325	Internal 325cfm (7" duct)	\$500
IN450	Internal 450cfm (7" duct)	\$500
IN600	Internal 600cfm (8" duct)	\$500
RE600	Recirculating internal 600cfm	\$600
IN900	Internal 900cfm (10" duct)	\$1,200
IN1200	Internal 1200cfm (10" duct)	\$1,200

4. EXTERNAL MOTOR OPTIONS

Item #	Description:	Each
EMIL800	Inline blower only (8" duct)	\$905
EMIL800K	Inliner blower with duct accessories.	\$1,214
EMIL1200	Inline blower only (10" duct)	\$1,135
EMIL1200K	Inliner blower with duct accessories.	\$1,585
EMIL800 = 836cfm EMIL1200 = 1266cfm		
EM1400	External 1400cfm (10" duct)	\$1,200

5. *DUCT ACCESSORIES

Item #	Description:	Each
S8	Duct Silencer 8"	\$227
S10	Duct Silencer 10"	\$350
BD8	inline Damper 8"	\$44
BD10	inline Damper 10"	\$55
MC8	Mounting Clamps 8"Duct	\$38
MC10	Mounting Clamps 10"Duct	\$45

6. HOOD ACCESSORIES (The pricing below is for all standard sizes, colors and finishes. Custom sizes and colors are available for an extra charge)

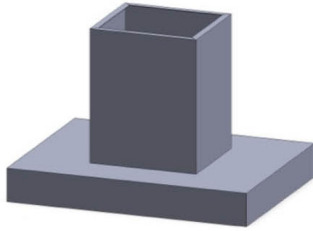
PRICED	Description:	PRICE
Per Inch	Crown 1 1/2" High	\$10
Per Inch	Tiered Crown - 3 1/2" High	\$12
Per Inch	Lip Treatment	\$12
Per Inch	Pot Rail	\$15
Each	Banding - 1 1/2" Wide	\$120
Per Band	Rivets - 4" Spacing	\$200
	CUSTOM DUCT LOCATION	\$240

PRICED	HM1 Hammertone	PRICE
Per Inch	Crown 1 1/2" High	\$12
Per Inch	Tiered Crown 3 1/2" High	\$15
Per Inch	Lip Treatment	\$15
Each	Banding - 1 1/2" Wide	\$180

STANDARD COLORS
Over 200 powder coat colors in stock
STANDARD FINISHES
Stainless Steel: Brushed, Polished, Jitterbug
Copper: Brushed, Polished, Smoked
Brass: Brushed, Polished, Smoked
We also offer clear coats for an extra charge

FREIGHT

Zone Prices
The freight charge is determined by what zone your state is in. Please refer to the zone map for the freight charge to your area.
Oversized hoods are subject to additional pricing



PSI1630 Professional Series Hood Information

Width 30", 36", 42", 48", 54", 60", 66"	1200cfm Has 24" Wide Duct Cover
Bottom Depth 27" - DC Depth 14"	600cfm or Less Has 16" Wide Duct Cover
Height 30"	External Blower Has 16" Wide Duct Cover
6" Tall Canopy	3000K LED Lighting

1. PSI1630 STANDARD SIZE PRICING - BLOWER NOT INCLUDED

Model #	Powder Coat Non standard colors are an additional fee	Brushed Stainless 304 #4	Brushed Copper - Brushed Brass
PSI1630-030	\$3,306	\$3,306	\$6,825
PSI1630-036	\$3,318	\$3,318	\$6,836
PSI1630-042	\$3,372	\$3,372	\$6,884
PSI1630-048	\$3,832	\$3,832	\$7,609
PSI1630-054	\$4,475	\$4,475	\$8,252
PSI1630-060	\$4,789	\$4,789	\$8,566
PSI1630-066	\$5,239	\$5,239	\$9,016

2. SPECIAL FINISH (OPTIONAL - ADD TO STEP 1)

Hammer Tone (HM1)	Polished (Mirror)	Smoked
\$1,115	\$1,115	\$1,115
\$1,115	\$1,115	\$1,115
\$1,115	\$1,115	\$1,115
\$1,115	\$1,115	\$1,115
\$1,595	\$1,355	\$1,235
\$1,595	\$1,355	\$1,235
\$1,595	\$1,355	\$1,235

3. INTERNAL MOTOR OPTIONS

Item #	Description:	Each
	No Blower	\$0
IN200	Internal 200cfm (7" duct)	\$500
IN325	Internal 325cfm (7" duct)	\$500
IN450	Internal 450cfm (7" duct)	\$500
IN600	Internal 600cfm (8" duct)	\$500
RE600	Recirculating internal 600cfm	\$600
IN900	Internal 900cfm (10" duct)	\$1,200
IN1200	Internal 1200cfm (10" duct)	\$1,200

4. EXTERNAL MOTOR OPTIONS

Item #	Description:	Each
EMIL800	Inline blower only (8" duct)	\$905
EMIL800K	Inliner blower with duct accessories.	\$1,214
EMIL1200	Inline blower only (10" duct)	\$1,135
EMIL1200K	Inliner blower with duct accessories.	\$1,585
EMIL800 = 836cfm EMIL1200 = 1266cfm		
EM1400	External 1400cfm (10" duct)	\$1,200

5. * DUCT ACCESSORIES

Item #	Description:	Each
S8	Duct Silencer 8"	\$227
S10	Duct Silencer 10"	\$350
BD8	inline Damper 8"	\$44
BD10	inline Damper 10"	\$55
MC8	Mounting Clamps 8"Duct	\$38
MC10	Mounting Clamps 10"Duct	\$45

6. HOOD ACCESSORIES (The pricing below is for all standard sizes, colors and finishes. Custom sizes and colors are available for an extra charge)

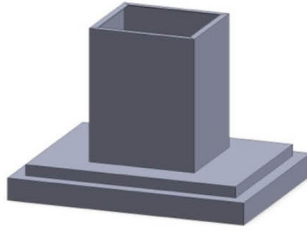
PRICED	Description:	PRICE
Per Inch	Crown 1 1/2" High	\$10
Per Inch	Tiered Crown - 3 1/2" High	\$12
Per Inch	Lip Treatment	\$12
Per Inch	Pot Rail	\$15
Each	Banding - 1 1/2" Wide	\$120
Per Band	Rivets - 4" Spacing	\$200
	CUSTOM DUCT LOCATION	\$240

PRICED	HM1 Hammertone	PRICE
Per Inch	Crown 1 1/2" High	\$12
Per Inch	Tiered Crown 3 1/2" High	\$15
Per Inch	Lip Treatment	\$15
Each	Banding - 1 1/2" Wide	\$180

STANDARD COLORS
Over 200 powder coat colors in stock
STANDARD FINISHES
Stainless Steel: Brushed, Polished, Jitterbug
Copper: Brushed, Polished, Smoked
Brass: Brushed, Polished, Smoked
We also offer clear coats for an extra charge

FREIGHT

Zone Prices
The freight charge is determined by what zone your state is in. Please refer to the zone map for the freight charge to your area.
Oversized hoods are subject to additional pricing



PSI1930 Professional Series Hood Information

Width 30", 36", 42", 48", 54", 60", 66"	1200cfm Has 24" Wide Duct Cover
Bottom Depth 27" - DC Depth 14"	600cfm or Less Has 16" Wide Duct Cover
Height 30"	External Blower Has 16" Wide Duct Cover
6" tall Canopy (4" + 2")	3000K LED Lighting

1. PSI1930 STANDARD SIZE PRICING - BLOWER NOT INCLUDED

Model #	Powder Coat Non standard colors are an additional fee	Brushed Stainless 304 #4	Brushed Copper - Brushed Brass
PSI1930-030	\$3,752	\$3,752	\$7,795
PSI1930-036	\$3,765	\$3,765	\$7,809
PSI1930-042	\$3,827	\$3,827	\$7,864
PSI1930-048	\$4,326	\$4,326	\$8,668
PSI1930-054	\$5,064	\$5,064	\$9,405
PSI1930-060	\$5,427	\$5,427	\$9,768
PSI1930-066	\$5,943	\$5,943	\$10,284

2. SPECIAL FINISH (OPTIONAL - ADD TO STEP 1)

Hammer Tone (HM1)	Polished (Mirror)	Smoked
\$1,115	\$1,115	\$1,115
\$1,115	\$1,115	\$1,115
\$1,115	\$1,115	\$1,115
\$1,115	\$1,115	\$1,115
\$1,595	\$1,355	\$1,235
\$1,595	\$1,355	\$1,235
\$1,595	\$1,355	\$1,235

3. INTERNAL MOTOR OPTIONS

Item #	Description:	Each
	No Blower	\$0
IN200	Internal 200cfm (7" duct)	\$500
IN325	Internal 325cfm (7" duct)	\$500
IN450	Internal 450cfm (7" duct)	\$500
IN600	Internal 600cfm (8" duct)	\$500
RE600	Recirculating internal 600cfm	\$600
IN900	Internal 900cfm (10" duct)	\$1,200
IN1200	Internal 1200cfm (10" duct)	\$1,200

4. EXTERNAL MOTOR OPTIONS

Item #	Description:	Each
EMIL800	Inline blower only (8" duct)	\$905
EMIL800K	Inliner blower with duct accessories.	\$1,214
EMIL1200	Inline blower only (10" duct)	\$1,135
EMIL1200K	Inliner blower with duct accessories.	\$1,585
EMIL800 = 836cfm EMIL1200 = 1266cfm		
EM1400	External 1400cfm (10" duct)	\$1,200

5. *DUCT ACCESSORIES

Item #	Description:	Each
S8	Duct Silencer 8"	\$227
S10	Duct Silencer 10"	\$350
BD8	inline Damper 8"	\$44
BD10	inline Damper 10"	\$55
MC8	Mounting Clamps 8"Duct	\$38
MC10	Mounting Clamps 10"Duct	\$45

6. HOOD ACCESSORIES (The pricing below is for all standard sizes, colors and finishes. Custom sizes and colors are available for an extra charge)

PRICED	Description:	PRICE
Per Inch	Crown 1 1/2" High	\$10
Per Inch	Tiered Crown - 3 1/2" High	\$12
Per Inch	Lip Treatment	\$12
Per Inch	Pot Rail	\$15
Each	Banding - 1 1/2" Wide	\$120
Per Band	Rivets - 4" Spacing	\$200
	CUSTOM DUCT LOCATION	\$240

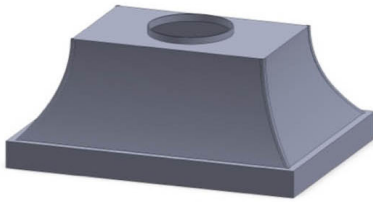
PRICED	HM1 Hammertone	PRICE
Per Inch	Crown 1 1/2" High	\$12
Per Inch	Tiered Crown 3 1/2" High	\$15
Per Inch	Lip Treatment	\$15
Each	Banding - 1 1/2" Wide	\$180

STANDARD COLORS
Over 200 powder coat colors in stock
STANDARD FINISHES
Stainless Steel: Brushed, Polished, Jitterbug
Copper: Brushed, Polished, Smoked
Brass: Brushed, Polished, Smoked
We also offer clear coats for an extra charge

FREIGHT

Zone Prices
The freight charge is determined by what zone your state is in. Please refer to the zone map for the freight charge to your area.
Oversized hoods are subject to additional pricing

PS1718 Professional Series Hood Information



Width 30", 36", 42", 48", 54", 60", 66"	Top Width is 12" Less Than Bottom
Bottom Depth 27" - Top Depth 15"	Hood has Corner Seam Caps
Height 18"	3000K LED Lighting
4" tall lip	

1. PS1718 STANDARD SIZE PRICING - BLOWER NOT INCLUDED

Model #	Powder Coat Non standard colors are an additional fee	Brushed Stainless 304 #4	Brushed Copper - Brushed Brass
PS1718-030	\$3,467	\$3,467	\$5,421
PS1718-036	\$3,617	\$3,617	\$5,642
PS1718-042	\$3,796	\$3,796	\$6,090
PS1718-048	\$4,462	\$4,462	\$7,198
PS1718-054	\$5,104	\$5,104	\$7,841
PS1718-060	\$5,413	\$5,413	\$8,162
PS1718-066	\$5,862	\$5,862	\$8,521

2. SPECIAL FINISH (OPTIONAL - ADD TO STEP 1)

Hammer Tone (HM1)	Polished (Mirror)	Smoked
\$1,115	\$1,115	\$1,115
\$1,115	\$1,115	\$1,115
\$1,115	\$1,115	\$1,115
\$1,115	\$1,115	\$1,115
\$1,595	\$1,355	\$1,235
\$1,595	\$1,355	\$1,235
\$1,595	\$1,355	\$1,235

3. INTERNAL MOTOR OPTIONS

Item #	Description:	Each
	No Blower	\$0
IN200	Internal 200cfm (7" duct)	\$500
IN325	Internal 325cfm (7" duct)	\$500
IN450	Internal 450cfm (7" duct)	\$500
IN600	Internal 600cfm (8" duct)	\$500
RE600	Recirculating internal 600cfm	\$600
IN900	Internal 900cfm (10" duct)	\$1,200
IN1200	Internal 1200cfm (10" duct)	\$1,200

4. EXTERNAL MOTOR OPTIONS

Item #	Description:	Each
EMIL800	Inline blower only (8" duct)	\$905
EMIL800K	Inliner blower with duct accessories.	\$1,214
EMIL1200	Inline blower only (10" duct)	\$1,135
EMIL1200K	Inliner blower with duct accessories.	\$1,585
EMIL800 = 836cfm EMIL1200 = 1266cfm		
EM1400	External 1400cfm (10" duct)	\$1,200

5. *DUCT ACCESSORIES

Item #	Description:	Each
S8	Duct Silencer 8"	\$227
S10	Duct Silencer 10"	\$350
BD8	inline Damper 8"	\$44
BD10	inline Damper 10"	\$55
MC8	Mounting Clamps 8"Duct	\$38
MC10	Mounting Clamps 10"Duct	\$45

6. HOOD ACCESSORIES (The pricing below is for all standard sizes, colors and finishes. Custom sizes and colors are available for an extra charge)

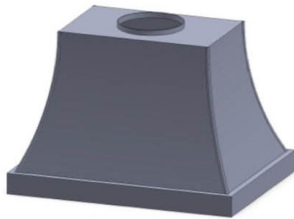
PRICED	Description:	PRICE
Per Inch	Crown 1 1/2" High	\$10
Per Inch	Tiered Crown - 3 1/2" High	\$12
Per Inch	Lip Treatment	\$12
Per Inch	Pot Rail	\$15
Each	Banding - 1 1/2" Wide	\$120
Per Band	Rivets - 4" Spacing	\$200
	CUSTOM DUCT LOCATION	\$240

PRICED	HM1 Hammertone	PRICE
Per Inch	Crown 1 1/2" High	\$12
Per Inch	Tiered Crown 3 1/2" High	\$15
Per Inch	Lip Treatment	\$15
Each	Banding - 1 1/2" Wide	\$180

STANDARD COLORS
Over 200 powder coat colors in stock
STANDARD FINISHES
Stainless Steel: Brushed, Polished, Jitterbug
Copper: Brushed, Polished, Smoked
Brass: Brushed, Polished, Smoked
We also offer clear coats for an extra charge

FREIGHT

Zone Prices
The freight charge is determined by what zone your state is in. Please refer to the zone map for the freight charge to your area.
Oversized hoods are subject to additional pricing



PS1730 Professional Series Hood Information

Width 30", 36", 42", 48", 54", 60", 66"	Top Width is 12" Less Than Bottom
Bottom Depth 27" - Top Depth is 15"	Hood has Corner Seam Caps
Height 30"	3000K LED Lighting
4" tall lip	

1. PS1730 STANDARD SIZE PRICING - BLOWER NOT INCLUDED

Model #	Powder Coat Non standard colors are an additional fee	Brushed Stainless 304 #4	Brushed Copper - Brushed Brass
PS1730-030	\$4,029	\$4,029	\$6,406
PS1730-036	\$4,304	\$4,304	\$6,854
PS1730-042	\$4,537	\$4,537	\$7,464
PS1730-048	\$5,284	\$5,284	\$8,823
PS1730-054	\$5,926	\$5,926	\$9,472
PS1730-060	\$6,241	\$6,241	\$9,780
PS1730-066	\$6,691	\$6,691	\$10,230

2. SPECIAL FINISH (OPTIONAL - ADD TO STEP 1)

Hammer Tone (HM1)	Polished (Mirror)	Smoked
\$1,115	\$1,115	\$1,115
\$1,115	\$1,115	\$1,115
\$1,115	\$1,115	\$1,115
\$1,115	\$1,115	\$1,115
\$1,595	\$1,355	\$1,235
\$1,595	\$1,355	\$1,235
\$1,595	\$1,355	\$1,235

3. INTERNAL MOTOR OPTIONS

Item #	Description:	Each
	No Blower	\$0
IN200	Internal 200cfm (7" duct)	\$500
IN325	Internal 325cfm (7" duct)	\$500
IN450	Internal 450cfm (7" duct)	\$500
IN600	Internal 600cfm (8" duct)	\$500
RE600	Recirculating internal 600cfm	\$600
IN900	Internal 900cfm (10" duct)	\$1,200
IN1200	Internal 1200cfm (10" duct)	\$1,200

4. EXTERNAL MOTOR OPTIONS

Item #	Description:	Each
EMIL800	Inline blower only (8" duct)	\$905
EMIL800K	Inliner blower with duct accessories.	\$1,214
EMIL1200	Inline blower only (10" duct)	\$1,135
EMIL1200K	Inliner blower with duct accessories.	\$1,585
EMIL800 = 836cfm EMIL1200 = 1266cfm		
EM1400	External 1400cfm (10" duct)	\$1,200

5. *DUCT ACCESSORIES

Item #	Description:	Each
S8	Duct Silencer 8"	\$227
S10	Duct Silencer 10"	\$350
BD8	inline Damper 8"	\$44
BD10	inline Damper 10"	\$55
MC8	Mounting Clamps 8"Duct	\$38
MC10	Mounting Clamps 10"Duct	\$45

6. HOOD ACCESSORIES (The pricing below is for all standard sizes, colors and finishes. Custom sizes and colors are available for an extra charge)

PRICED	Description:	PRICE
Per Inch	Crown 1 1/2" High	\$10
Per Inch	Tiered Crown - 3 1/2" High	\$12
Per Inch	Lip Treatment	\$12
Per Inch	Pot Rail	\$15
Each	Banding - 1 1/2" Wide	\$120
Per Band	Rivets - 4" Spacing	\$200
	CUSTOM DUCT LOCATION	\$240

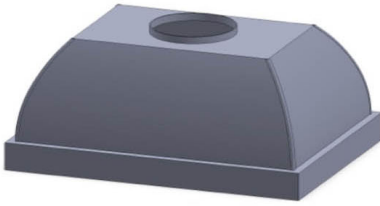
PRICED	HM1 Hammertone	PRICE
Per Inch	Crown 1 1/2" High	\$12
Per Inch	Tiered Crown 3 1/2" High	\$15
Per Inch	Lip Treatment	\$15
Each	Banding - 1 1/2" Wide	\$180

STANDARD COLORS
Over 200 powder coat colors in stock
STANDARD FINISHES
Stainless Steel: Brushed, Polished, Jitterbug
Copper: Brushed, Polished, Smoked
Brass: Brushed, Polished, Smoked
We also offer clear coats for an extra charge

FREIGHT

Zone Prices
The freight charge is determined by what zone your state is in. Please refer to the zone map for the freight charge to your area.
Oversized hoods are subject to additional pricing

PS3018 Professional Series Hood Information



Width 30", 36", 42", 48", 54", 60", 66"

Top Width is 12" Less Than Bottom

Bottom Depth 24" - Top Depth is 15"

Hood has Corner Seam Caps

Height 18"

3000K LED Lighting

4" tall lip

1. PS3018 STANDARD SIZE PRICING - BLOWER NOT INCLUDED

Model #	Powder Coat Non standard colors are an additional fee	Brushed Stainless 304 #4	Brushed Copper - Brushed Brass
PS3018-030	\$4,743	\$4,743	\$7,078
PS3018-036	\$4,843	\$4,843	\$7,145
PS3018-042	\$4,935	\$4,935	\$7,322
PS3018-048	\$5,718	\$5,718	\$8,969
PS3018-054	\$6,309	\$6,309	\$9,690
PS3018-060	\$6,552	\$6,552	\$9,855
PS3018-066	\$6,966	\$6,966	\$10,206

2. SPECIAL FINISH (OPTIONAL - ADD TO STEP 1)

Hammer Tone (HM1)	Polished (Mirror)	Smoked
\$1,115	\$1,115	\$1,115
\$1,115	\$1,115	\$1,115
\$1,115	\$1,115	\$1,115
\$1,115	\$1,115	\$1,115
\$1,595	\$1,355	\$1,235
\$1,595	\$1,355	\$1,235
\$1,595	\$1,355	\$1,235

3. INTERNAL MOTOR OPTIONS

Item #	Description:	Each
	No Blower	\$0
IN200	Internal 200cfm (7" duct)	\$500
IN325	Internal 325cfm (7" duct)	\$500
IN450	Internal 450cfm (7" duct)	\$500
IN600	Internal 600cfm (8" duct)	\$500
RE600	Recirculating internal 600cfm	\$600
IN900	Internal 900cfm (10" duct)	\$1,200
IN1200	Internal 1200cfm (10" duct)	\$1,200

4. EXTERNAL MOTOR OPTIONS

Item #	Description:	Each
EMIL800	Inline blower only (8" duct)	\$905
EMIL800K	Inliner blower with duct accessories.	\$1,214
EMIL1200	Inline blower only (10" duct)	\$1,135
EMIL1200K	Inliner blower with duct accessories.	\$1,585
EMIL800 = 836cfm EMIL1200 = 1266cfm		
EM1400	External 1400cfm (10" duct)	\$1,200

5. *DUCT ACCESSORIES

Item #	Description:	Each
S8	Duct Silencer 8"	\$227
S10	Duct Silencer 10"	\$350
BD8	inline Damper 8"	\$44
BD10	inline Damper 10"	\$55
MC8	Mounting Clamps 8"Duct	\$38
MC10	Mounting Clamps 10"Duct	\$45

6. HOOD ACCESSORIES (The pricing below is for all standard sizes, colors and finishes. Custom sizes and colors are available for an extra charge)

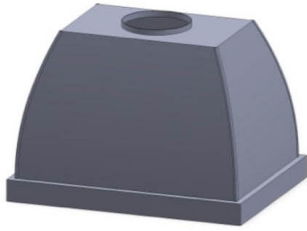
PRICED	Description:	PRICE
Per Inch	Crown 1 1/2" High	\$10
Per Inch	Tiered Crown - 3 1/2" High	\$12
Per Inch	Lip Treatment	\$12
Per Inch	Pot Rail	\$15
Each	Banding - 1 1/2" Wide	\$120
Per Band	Rivets - 4" Spacing	\$200
	CUSTOM DUCT LOCATION	\$240

PRICED	HM1 Hammertone	PRICE
Per Inch	Crown 1 1/2" High	\$12
Per Inch	Tiered Crown 3 1/2" High	\$15
Per Inch	Lip Treatment	\$15
Each	Banding - 1 1/2" Wide	\$180

STANDARD COLORS
Over 200 powder coat colors in stock
STANDARD FINISHES
Stainless Steel: Brushed, Polished, Jitterbug
Copper: Brushed, Polished, Smoked
Brass: Brushed, Polished, Smoked
We also offer clear coats for an extra charge

FREIGHT

Zone Prices
The freight charge is determined by what zone your state is in. Please refer to the zone map for the freight charge to your area.
Oversized hoods are subject to additional pricing



PS3030 Professional Series Hood Information

Width 30", 36", 42", 48", 54", 60", 66"

Top Width is 12" Less Than Bottom

Bottom Depth 27" - Top Depth is 15"

Hood has Corner Seam Caps

Height 30"

3000K LED Lighting

4" tall lip

1. PS3030 STANDARD SIZE PRICING - BLOWER NOT INCLUDED

Model #	Powder Coat Non standard colors are an additional fee	Brushed Stainless 304 #4	Brushed Copper - Brushed Brass
PS3030-030	\$5,128	\$5,128	\$7,667
PS3030-036	\$5,235	\$5,235	\$7,738
PS3030-042	\$5,337	\$5,337	\$7,930
PS3030-048	\$6,170	\$6,170	\$9,703
PS3030-054	\$6,813	\$6,813	\$10,487
PS3030-060	\$7,076	\$7,076	\$10,667
PS3030-066	\$7,526	\$7,526	\$11,116

2. SPECIAL FINISH (OPTIONAL - ADD TO STEP 1)

Hammer Tone (HM1)	Polished (Mirror)	Smoked
\$1,115	\$1,115	\$1,115
\$1,115	\$1,115	\$1,115
\$1,115	\$1,115	\$1,115
\$1,115	\$1,115	\$1,115
\$1,595	\$1,355	\$1,235
\$1,595	\$1,355	\$1,235
\$1,595	\$1,355	\$1,235

3. INTERNAL MOTOR OPTIONS

Item #	Description:	Each
	No Blower	\$0
IN200	Internal 200cfm (7" duct)	\$500
IN325	Internal 325cfm (7" duct)	\$500
IN450	Internal 450cfm (7" duct)	\$500
IN600	Internal 600cfm (8" duct)	\$500
RE600	Recirculating internal 600cfm	\$600
IN900	Internal 900cfm (10" duct)	\$1,200
IN1200	Internal 1200cfm (10" duct)	\$1,200

4. EXTERNAL MOTOR OPTIONS

Item #	Description:	Each
EMIL800	Inline blower only (8" duct)	\$905
EMIL800K	Inliner blower with duct accessories.	\$1,214
EMIL1200	Inline blower only (10" duct)	\$1,135
EMIL1200K	Inliner blower with duct accessories.	\$1,585
EMIL800 = 836cfm EMIL1200 = 1266cfm		
EM1400	External 1400cfm (10" duct)	\$1,200

5. *DUCT ACCESSORIES

Item #	Description:	Each
S8	Duct Silencer 8"	\$227
S10	Duct Silencer 10"	\$350
BD8	inline Damper 8"	\$44
BD10	inline Damper 10"	\$55
MC8	Mounting Clamps 8"Duct	\$38
MC10	Mounting Clamps 10"Duct	\$45

6. HOOD ACCESSORIES (The pricing below is for all standard sizes, colors and finishes. Custom sizes and colors are available for an extra charge)

PRICED	Description:	PRICE
Per Inch	Crown 1 1/2" High	\$10
Per Inch	Tiered Crown - 3 1/2" High	\$12
Per Inch	Lip Treatment	\$12
Per Inch	Pot Rail	\$15
Each	Banding - 1 1/2" Wide	\$120
Per Band	Rivets - 4" Spacing	\$200
	CUSTOM DUCT LOCATION	\$240

PRICED	HM1 Hammertone	PRICE
Per Inch	Crown 1 1/2" High	\$12
Per Inch	Tiered Crown 3 1/2" High	\$15
Per Inch	Lip Treatment	\$15
Each	Banding - 1 1/2" Wide	\$180

STANDARD COLORS
Over 200 powder coat colors in stock
STANDARD FINISHES
Stainless Steel: Brushed, Polished, Jitterbug
Copper: Brushed, Polished, Smoked
Brass: Brushed, Polished, Smoked
We also offer clear coats for an extra charge

FREIGHT

Zone Prices
The freight charge is determined by what zone your state is in. Please refer to the zone map for the freight charge to your area.
Oversized hoods are subject to additional pricing



PS13342 Professional Series Hood Information

Width 30", 36", 42", 48", 54", 60", 66"

Hood has Corner Seam Caps

Bottom Depth 27"

Vertical Bands and Corner Rivets Included

Height 42"

Can be Made Without Quilted Pattern

6" tall bottom lip - 7" tall top crown

3000K LED Lighting

1. PS13342 STANDARD SIZE PRICING - BLOWER NOT INCLUDED

Model #	Powder Coat Non standard colors are an additional fee	Brushed Stainless 304 #4	Brushed Copper - Brushed Brass
PS13342-030	\$6,767	\$6,767	\$9,738
PS13342-036	\$7,112	\$7,112	\$10,300
PS13342-042	\$7,401	\$7,401	\$11,054
PS13342-048	\$8,243	\$8,243	\$12,663
PS13342-054	\$9,054	\$9,054	\$13,475
PS13342-060	\$9,443	\$9,443	\$13,863
PS13342-066	\$9,911	\$9,911	\$14,564

2. SPECIAL FINISH (OPTIONAL - ADD TO STEP 1)

Hammer Tone (HM1)	Polished (Mirror)	Smoked
\$1,115	\$1,115	\$1,115
\$1,115	\$1,115	\$1,115
\$1,115	\$1,115	\$1,115
\$1,115	\$1,115	\$1,115
\$1,595	\$1,355	\$1,235
\$1,595	\$1,355	\$1,235
\$1,595	\$1,355	\$1,235

3. INTERNAL MOTOR OPTIONS

Item #	Description:	Each
	No Blower	\$0
IN200	Internal 200cfm (7" duct)	\$500
IN325	Internal 325cfm (7" duct)	\$500
IN450	Internal 450cfm (7" duct)	\$500
IN600	Internal 600cfm (8" duct)	\$500
RE600	Recirculating internal 600cfm	\$600
IN900	Internal 900cfm (10" duct)	\$1,200
IN1200	Internal 1200cfm (10" duct)	\$1,200

4. EXTERNAL MOTOR OPTIONS

Item #	Description:	Each
EMIL800	Inline blower only (8" duct)	\$905
EMIL800K	Inliner blower with duct accessories.	\$1,214
EMIL1200	Inline blower only (10" duct)	\$1,135
EMIL1200K	Inliner blower with duct accessories.	\$1,585
EMIL800 = 836cfm EMIL1200 = 1266cfm		
EM1400	External 1400cfm (10" duct)	\$1,200

5. *DUCT ACCESSORIES

Item #	Description:	Each
S8	Duct Silencer 8"	\$227
S10	Duct Silencer 10"	\$350
BD8	inline Damper 8"	\$44
BD10	inline Damper 10"	\$55
MC8	Mounting Clamps 8"Duct	\$38
MC10	Mounting Clamps 10"Duct	\$45

6. HOOD ACCESSORIES (The pricing below is for all standard sizes, colors and finishes. Custom sizes and colors are available for an extra charge)

PRICED	Description:	PRICE
Per Inch	Crown 1 1/2" High	\$10
Per Inch	Tiered Crown - 3 1/2" High	\$12
Per Inch	Lip Treatment	\$12
Per Inch	Pot Rail	\$15
Each	Banding - 1 1/2" Wide	\$120
Per Band	Rivets - 4" Spacing	\$200
	CUSTOM DUCT LOCATION	\$240

PRICED	HM1 Hammertone	PRICE
Per Inch	Crown 1 1/2" High	\$12
Per Inch	Tiered Crown 3 1/2" High	\$15
Per Inch	Lip Treatment	\$15
Each	Banding - 1 1/2" Wide	\$180

STANDARD COLORS
Over 200 powder coat colors in stock
STANDARD FINISHES
Stainless Steel: Brushed, Polished, Jitterbug
Copper: Brushed, Polished, Smoked
Brass: Brushed, Polished, Smoked
We also offer clear coats for an extra charge

FREIGHT

Zone Prices
The freight charge is determined by what zone your state is in. Please refer to the zone map for the freight charge to your area.
Oversized hoods are subject to additional pricing



PSI3230 Professional Series Hood Information

Width 30", 36", 42", 48", 54", 60", 66"
 Bottom Depth 27" - Top Depth 15"
 Height 30"
 4" tall lip

Top Width is 12" Less Than Bottom
 Hood has Corner Seam Caps
 3000K LED Lighting

1. PSI3230 STANDARD SIZE PRICING - BLOWER NOT INCLUDED

Model #	Powder Coat Non standard colors are an additional fee	Brushed Stainless 304 #4	Brushed Copper - Brushed Brass
PSI3230-030	\$5,662	\$5,662	\$8,483
PSI3230-036	\$5,781	\$5,781	\$8,562
PSI3230-042	\$5,894	\$5,894	\$8,775
PSI3230-048	\$6,798	\$6,798	\$10,723
PSI3230-054	\$7,512	\$7,512	\$11,594
PSI3230-060	\$7,804	\$7,804	\$11,794
PSI3230-066	\$8,304	\$8,304	\$12,293

2. SPECIAL FINISH (OPTIONAL - ADD TO STEP 1)

Hammer Tone (HM1)	Polished (Mirror)	Smoked
\$1,115	\$1,115	\$1,115
\$1,115	\$1,115	\$1,115
\$1,115	\$1,115	\$1,115
\$1,115	\$1,115	\$1,115
\$1,595	\$1,355	\$1,235
\$1,595	\$1,355	\$1,235
\$1,595	\$1,355	\$1,235

3. INTERNAL MOTOR OPTIONS

Item #	Description:	Each
	No Blower	\$0
IN200	Internal 200cfm (7" duct)	\$500
IN325	Internal 325cfm (7" duct)	\$500
IN450	Internal 450cfm (7" duct)	\$500
IN600	Internal 600cfm (8" duct)	\$500
RE600	Recirculating internal 600cfm	\$600
IN900	Internal 900cfm (10" duct)	\$1,200
IN1200	Internal 1200cfm (10" duct)	\$1,200

4. EXTERNAL MOTOR OPTIONS

Item #	Description:	Each
EMIL800	Inline blower only (8" duct)	\$905
EMIL800K	Inliner blower with duct accessories.	\$1,214
EMIL1200	Inline blower only (10" duct)	\$1,135
EMIL1200K	Inliner blower with duct accessories.	\$1,585
EMIL800 = 836cfm EMIL1200 = 1266cfm		
EM1400	External 1400cfm (10" duct)	\$1,200

5. *DUCT ACCESSORIES

Item #	Description:	Each
S8	Duct Silencer 8"	\$227
S10	Duct Silencer 10"	\$350
BD8	inline Damper 8"	\$44
BD10	inline Damper 10"	\$55
MC8	Mounting Clamps 8"Duct	\$38
MC10	Mounting Clamps 10"Duct	\$45

6. HOOD ACCESSORIES (The pricing below is for all standard sizes, colors and finishes. Custom sizes and colors are available for an extra charge)

PRICED	Description:	PRICE
Per Inch	Crown 1 1/2" High	\$10
Per Inch	Tiered Crown - 3 1/2" High	\$12
Per Inch	Lip Treatment	\$12
Per Inch	Pot Rail	\$15
Each	Banding - 1 1/2" Wide	\$120
Per Band	Rivets - 4" Spacing	\$200
	CUSTOM DUCT LOCATION	\$240

PRICED	HM1 Hammertone	PRICE
Per Inch	Crown 1 1/2" High	\$12
Per Inch	Tiered Crown 3 1/2" High	\$15
Per Inch	Lip Treatment	\$15
Each	Banding - 1 1/2" Wide	\$180

STANDARD COLORS
Over 200 powder coat colors in stock
STANDARD FINISHES
Stainless Steel: Brushed, Polished, Jitterbug
Copper: Brushed, Polished, Smoked
Brass: Brushed, Polished, Smoked
We also offer clear coats for an extra charge

FREIGHT

Zone Prices
The freight charge is determined by what zone your state is in. Please refer to the zone map for the freight charge to your area.
Oversized hoods are subject to additional pricing



PSI3542 Professional Series Hood Information

Width 30", 36", 42", 48", 54", 60", 66"
 Depth 27"
 Height 42"
 4" tall lip - 2" tall trim in center

Hood Has Corner Seam Caps
 3000K LED Lighting

1. PSI3542 STANDARD SIZE PRICING - BLOWER NOT INCLUDED

Model #	Powder Coat Non standard colors are an additional fee	Brushed Stainless 304 #4	Brushed Copper - Brushed Brass
PSI3542-030	\$9,127	\$9,127	\$12,112
PSI3542-036	\$9,218	\$9,218	\$12,203
PSI3542-042	\$9,384	\$9,384	\$12,437
PSI3542-048	\$10,383	\$10,383	\$14,543
PSI3542-054	\$11,139	\$11,139	\$15,299
PSI3542-060	\$11,512	\$11,512	\$15,673
PSI3542-066	\$11,935	\$11,935	\$16,315

2. SPECIAL FINISH (OPTIONAL - ADD TO STEP 1)

Hammer Tone (HM1)	Polished (Mirror)	Smoked
\$1,115	\$1,115	\$1,115
\$1,115	\$1,115	\$1,115
\$1,115	\$1,115	\$1,115
\$1,115	\$1,115	\$1,115
\$1,595	\$1,355	\$1,235
\$1,595	\$1,355	\$1,235
\$1,595	\$1,355	\$1,235

3. INTERNAL MOTOR OPTIONS

Item #	Description:	Each
	No Blower	\$0
IN200	Internal 200cfm (7" duct)	\$500
IN325	Internal 325cfm (7" duct)	\$500
IN450	Internal 450cfm (7" duct)	\$500
IN600	Internal 600cfm (8" duct)	\$500
RE600	Recirculating internal 600cfm	\$600
IN900	Internal 900cfm (10" duct)	\$1,200
IN1200	Internal 1200cfm (10" duct)	\$1,200

4. EXTERNAL MOTOR OPTIONS

Item #	Description:	Each
EMIL800	Inline blower only (8" duct)	\$905
EMIL800K	Inliner blower with duct accessories.	\$1,214
EMIL1200	Inline blower only (10" duct)	\$1,135
EMIL1200K	Inliner blower with duct accessories.	\$1,585
EMIL800 = 836cfm EMIL1200 = 1266cfm		
EM1400	External 1400cfm (10" duct)	\$1,200

5. *DUCT ACCESSORIES

Item #	Description:	Each
S8	Duct Silencer 8"	\$227
S10	Duct Silencer 10"	\$350
BD8	inline Damper 8"	\$44
BD10	inline Damper 10"	\$55
MC8	Mounting Clamps 8"Duct	\$38
MC10	Mounting Clamps 10"Duct	\$45

6. HOOD ACCESSORIES (The pricing below is for all standard sizes, colors and finishes. Custom sizes and colors are available for an extra charge)

PRICED	Description:	PRICE
Per Inch	Crown 1 1/2" High	\$10
Per Inch	Tiered Crown - 3 1/2" High	\$12
Per Inch	Lip Treatment	\$12
Per Inch	Pot Rail	\$15
Each	Banding - 1 1/2" Wide	\$120
Per Band	Rivets - 4" Spacing	\$200
	CUSTOM DUCT LOCATION	\$240

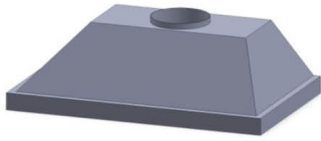
PRICED	HM1 Hammertone	PRICE
Per Inch	Crown 1 1/2" High	\$12
Per Inch	Tiered Crown 3 1/2" High	\$15
Per Inch	Lip Treatment	\$15
Each	Banding - 1 1/2" Wide	\$180

STANDARD COLORS
Over 200 powder coat colors in stock
STANDARD FINISHES
Stainless Steel: Brushed, Polished, Jitterbug
Copper: Brushed, Polished, Smoked
Brass: Brushed, Polished, Smoked
We also offer clear coats for an extra charge

FREIGHT

Zone Prices
The freight charge is determined by what zone your state is in. Please refer to the zone map for the freight charge to your area.
Oversized hoods are subject to additional charges

Professional Series Liner Information



Baffle Filters Included	U.L. Listed for Indoor & Outdoor use
Top Vent Standard - Duct Collar Included	Custom Sizes Available
Variable Fan and Light Switch (5amp)	Mounting Height 30" - 36" above cook top
3000K LED Lighting	

PSL 19- 1 (400cfm)

PSL19 - 2 (600cfm)

PSL19 - 3 (1200cfm)

PSL19 - 0 (NO BLOWER)

Model #	400 CFM	Model #	600 CFM	Model #	1200 CFM	Model #	0 CFM
PSL19 - 128	\$1,644	PSL19 - 228	\$1,644	PSL19 - 328	N/A	PSL19 - 028	\$1,423
PSL19 - 134	\$1,714	PSL19 - 234	\$1,714	PSL19 - 334	N/A	PSL19 - 034	\$1,493
PSL19 - 140	\$1,778	PSL19 - 240	\$1,778	PSL19 - 340	\$2,301	PSL19 - 040	\$1,556
PSL19 - 146	\$1,838	PSL19 - 246	\$1,838	PSL19 - 346	\$2,427	PSL19 - 046	\$1,617
PSL19 - 152	\$2,357	PSL19 - 252	\$2,357	PSL19 - 352	\$3,110	PSL19 - 052	\$2,135
PSL19 - 158	\$2,628	PSL19 - 258	\$2,628	PSL19 - 358	\$3,381	PSL19 - 058	\$2,407
12" tall (+ MB) x 19 1/4" deep		12" tall (+ MB) x 19 1/4" deep		12" tall (+ MB) x 19 1/4" deep		12" tall x 19 1/4" deep	

PSL22- 1 (400cfm)

PSL22 - 2 (600cfm)

PSL22 - 3 (1200cfm)

PSL22 - 0 (NO BLOWER)

Model #	400 CFM	Model #	600 CFM	Model #	1200 CFM	Model #	0 CFM
PSL22 - 128	\$1,644	PSL22 - 228	\$1,644	PSL22 - 328	N/A	PSL22 - 028	\$1,423
PSL22 - 134	\$1,714	PSL22 - 234	\$1,714	PSL22 - 334	N/A	PSL22 - 034	\$1,493
PSL22 - 140	\$1,778	PSL22 - 240	\$1,778	PSL22 - 340	\$2,301	PSL22 - 040	\$1,556
PSL22 - 146	\$1,838	PSL22 - 246	\$1,838	PSL22 - 346	\$2,427	PSL22 - 046	\$1,617
PSL22 - 152	\$2,357	PSL22 - 252	\$2,357	PSL22 - 352	\$3,110	PSL22 - 052	\$2,135
PSL22 - 158	\$2,628	PSL22 - 258	\$2,628	PSL22 - 358	\$3,381	PSL22 - 058	\$2,407
12" tall (+ MB) x 22 1/2" deep		12" tall (+ MB) x 22 1/2" deep		12" tall (+ MB) x 22 1/2" deep		12" tall x 22 1/2" deep	

ISLAND PSLI - 1 (400cfm)

ISLAND PSLI - 2 (600cfm)

ISLAND PSLI - 3 (1200cfm)

ISLAND PSLI - 0 (NO BLOWER)

Model #	400 CFM	Model #	600 CFM	Model #	1200 CFM	Model #	0 CFM
PSLI - 128	\$2,433	PSLI - 228	\$2,433	PSLI - 328	N/A	PSLI-028	\$2,153
PSLI - 134	\$2,465	PSLI - 234	\$2,465	PSLI - 334	N/A	PSLI-034	\$2,213
PSLI - 140	\$2,498	PSLI - 240	\$2,498	PSLI - 340	\$2,847	PSLI - 040	\$2,276
PSLI - 146	\$2,566	PSLI - 246	\$2,566	PSLI - 346	\$3,022	PSLI - 046	\$2,345
PSLI - 152	\$3,117	PSLI - 252	\$3,117	PSLI - 352	\$3,542	PSLI - 052	\$2,895
PSLI - 158	\$3,408	PSLI - 258	\$3,408	PSLI - 358	\$3,814	PSLI - 058	\$3,187
12" tall (+ MB) x 25 1/2" deep		12" tall (+ MB) x 25 1/2" deep		12" tall (+ MB) x 25 1/2" deep		12" tall x 25 1/2" deep	

4. EXTERNAL MOTOR OPTIONS

Item #	Description:	Each
EMIL800	Inline blower only (8" duct)	\$905
EMIL800K	Inliner blower with duct accessories.	\$1,214
EMIL1200	Inline blower only (10" duct)	\$1,135
EMIL1200K	Inliner blower with duct accessories.	\$1,585
EMIL800 = 836cfm EMIL1200 = 1266cfm		
EM1400	External 1400cfm (10" duct)	\$1,200

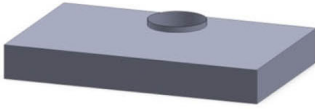
DUCT ACCESSORIES

Item #	Description:	Each
S8	Duct Silencer 8"	\$227
S10	Duct Silencer 10"	\$350
BD8	Inline Damper 8"	\$44
BD10	Inline Damper 10"	\$55
MC8	Mounting Clamps 8"Duct	\$38
MC10	Mounting Clamps 10"Duct	\$45

FREIGHT

Zone Prices	
	The freight charge is determined by what zone your state is in. Please refer to the zone map for the freight charge to your area.
	Oversized liners are subject to additional pricing

Professional Series Box Liner Information



Baffle Filters Included	U.L. Listed for Indoor & Outdoor use
Top Vent Standard - Duct Collar Included	Custom Sizes Available
Variable Fan and Light Switch (5amp)	Mounting Height 30" - 36" above cook top
3000K LED Lighting	

PSBL - 1 (400cfm)

PSBL - 2 (600cfm)

PSBL - 3 (1200cfm)

PSBL - 0 (NO BLOWER)

Model #	400 CFM	Model #	600 CFM	Model #	1200 CFM	Model #	0 CFM
PSBL - 128	\$1,644	PSBL - 228	\$1,644	PSBL - 328	N/A	PSBL - 028	\$1,423
PSBL - 134	\$1,714	PSBL - 234	\$1,714	PSBL - 334	N/A	PSBL - 034	\$1,493
PSBL - 140	\$1,778	PSBL - 240	\$1,778	PSBL - 340	\$2,301	PSBL - 040	\$1,556
PSBL - 146	\$1,838	PSBL - 246	\$1,838	PSBL - 346	\$2,427	PSBL - 046	\$1,617
PSBL - 152	\$2,357	PSBL - 252	\$2,357	PSBL - 352	\$3,110	PSBL - 052	\$2,135
PSBL - 158	\$2,628	PSBL - 258	\$2,628	PSBL - 358	\$3,381	PSBL - 058	\$2,407
6" tall (+ MB) x 22 1/2" deep		6" tall (+ MB) x 22 1/2" deep		6" tall (+ MB) x 22 1/2" deep		6" tall x 22 1/2" deep	

4. EXTERNAL MOTOR OPTIONS

Item #	Description:	Each
EMIL800	Inline blower only (8" duct)	\$905
EMIL800K	Inliner blower with duct accessories.	\$1,214
EMIL1200	Inline blower only (10" duct)	\$1,135
EMIL1200K	Inliner blower with duct accessories.	\$1,585
EMIL800 = 836cfm EMIL1200 = 1266cfm		
EM1400	External 1400cfm (10" duct)	\$1,200

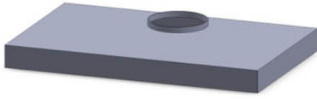
DUCT ACCESSORIES

Item #	Description:	Each
S8	Duct Silencer 8"	\$227
S10	Duct Silencer 10"	\$350
BD8	Inline Damper 8"	\$44
BD10	Inline Damper 10"	\$55
MC8	Mounting Clamps 8"Duct	\$38
MC10	Mounting Clamps 10"Duct	\$45

FREIGHT

	Zone Prices
	The freight charge is determined by what zone your state is in. Please refer to the zone map for the freight charge to your area.
	Oversized liners are subject to additional pricing

Professional Mesh Liner Information



Mesh Filters Included Top Vent Standard - Duct Collar Included Variable Fan and Light Switch (5amp) 3000K LED Lighting	U.L. Listed for Indoor & Outdoor use Custom Sizes Available Mounting Height 30" - 36" above cook top
---	--

WALL MOUNT - 18 1/8" DEPTH

Model #	Width	Price
PML18-28	28 3/8"	\$548
PML18-34	34 3/8"	\$637
PML18-40	40 3/8"	\$674
PML18-46	46 3/8"	\$717
PML18-52	52 3/8"	\$978
PML18-58	58 3/8"	\$1,085
4" tall x 18 1/8" deep		

WALL MOUNT - 22 1/2" DEPTH

Model #	Width	Price
PML22-28	28 3/8"	\$895
PML22-34	34 3/8"	\$941
PML22-40	40 3/8"	\$987
PML22-46	46 3/8"	\$1,034
PML22-52	52 3/8"	\$1,295
PML22-58	58 3/8"	\$1,401
4" tall x 22 1/2" deep		

ISLAND MOUNT - 22 1/2" DEPTH

Model #	Width	Price
PMI22-28	28 3/8"	\$1,292
PMI22-34	34 3/8"	\$1,338
PMI22-40	40 3/8"	\$1,383
PMI22-46	46 3/8"	\$1,430
PMI22-52	52 3/8"	\$1,732
PMI22-58	58 3/8"	\$1,838
4" tall x 22 1/2" deep		

INTERNAL MOTOR OPTIONS

Item #	Description:	Each
	No Blower	\$0
LP8*	8" Round Top Collar Plate	\$48
LP10*	10" Round Top Collar Plate	\$48
M400	Internal 400cfm (7" duct)	\$600
M600	Internal 600cfm (8" duct)	\$620
M1200	Internal 1000cfm (10" duct)	\$1,200
*	No Charge if purchase with External	

4. EXTERNAL MOTOR OPTIONS

Item #	Description:	Each
EMIL800	Inline blower only (8" duct)	\$905
EMIL800K	Inliner blower with duct accessories.	\$1,214
EMIL1200	Inline blower only (10" duct)	\$1,135
EMIL1200K	Inliner blower with duct accessories.	\$1,585
EMIL800 = 836cfm EMIL1200 = 1266cfm		
EM1400	External 1400cfm (10" duct)	\$1,200

DUCT ACCESSORIES

Item #	Description:	Each
S8	Duct Silencer 8"	\$227
S10	Duct Silencer 10"	\$350
BD8	Inline Damper 8"	\$44
BD10	Inline Damper 10"	\$55
MC8	Mounting Clamps 8"Duct	\$38
MC10	Mounting Clamps 10"Duct	\$45

FREIGHT

	Zone Prices
	The freight charge is determined by what zone your state is in. Please refer to the zone map for the freight charge to your area.
	Oversized liners are subject to additional pricing



Modern-Aire Ventilating • 7319 Lankershim Blvd. • North Hollywood, CA 91605
Phone: 818.765.9870 • Toll Free: 866.731.2007 • Fax: 818.765.4916
Website: www.modernaire.com