

2026 UMRP PRICE LIST

MODERN AIRE



Tarin Yankovich
Southwestern U.S. Sales Manager

Luxury Brands
INTERNATIONAL, NA

1 (855) 855.8030 x 626 • TARIN@LBINA.COM • WWW.LBINA.COM

Luxury Brands

Product Information and Specifications

Model Number Information

Model Number Decoding - Example Model Number - **PS1018-236**

PS - Professional Series (baffle filter) **PM** - Professional Mesh (mesh filter)

10 - Model Number / Shape of Canopy

18 - Height of Range Hood

2 - Type of blower Installed - 1=450cfm and below 2=600cfm 3=900cfm or 1200cfm 0=No Internal Motor

36 - Width of Hood

Electrical Information

600cfm or Smaller Internal Motor is	10amps	8 1/2" to right off C/L duct
900cfm & 1200cfm Internal Blower is	10amps	12 1/2" to right off C/L duct
836cfm Inline Blower is	10amps	8 1/2" to right off C/L duct
1266cfm Inline Blower is	10amps	8 1/2" to right off C/L duct
1400cfm Outside Roof or Wall Mount Blower is	10amps	8 1/2" to right off C/L duct
Set up for remote blower by others	10amps	8 1/2" to right off C/L duct

* Variable light (5amp) and fan speed switch (5amp) included

* U.L. Listed for indoor and outdoor (under roof) use.

Lighting

LED 3000K Lighting (30" - 36" = 2 lights) (42" - 54" = 3 lights) (60" - 66" = 4 lights)

Rear heat lamps available. Hood needs to be minimum 30" deep and 18" tall to accommodate.

Standard Canopy Duct Collar Locations

Wall Mount Hoods 1" From Back of Hood, Centered Left to Right

Island Mount Hoods Centered Front To Back and Left to Right

Recirculating Hoods 4" x 8" hole pattern on front of hood (600cfm only) includes charcoal filters

* Top vent is standard. Custom duct locations available upon request at additional charge

Construction

Standard Seams - Front and sides are bonded together leaving a small seam visible e.g. PS10

Seamless - Hood seams are welded then finished.

Seam caps - 1/2" (cannot change size) seam caps are used to hold hood together. e.g. PS15

Customizing Your Canopy

Modern-Aire will customize any canopy to your specific requirements

Customization Includes (at additional cost) - Custom Widths, Depths, Duct Locations and Materials

* 24" deep is standard for wall hoods - if 27" deep is wanted there is no additional cost.

Guidelines For Choosing The Correct CFM

100 CFM for every 10,000 BTU's

Guidelines For Choosing The Correct Mounting Height

Minimum Mounting Height 30" Above Cooking Surface

Maximum Mounting Height 36" Above Cooking Surface

Recommended Mounting Height 32" - 34" Above Cooking Surface

Expedite Program

35% up Charge Upon Availablity

Custom Hood Worksheet

Step 1	Pick size and base material finish Model No. and Finish: _____	\$ <input type="text"/>
Step 2	Add special finish if needed Special Finish (if Applies): _____	\$ <input type="text"/>
Step 3	If Internal motor is wanted add Motor Model #: _____	\$ <input type="text"/>
Step 4	If External motor is wanted add Motor Model #: _____	\$ <input type="text"/>
Step 5	If Ducting accessories wanted add List Accessories Wanted: _____	\$ <input type="text"/>
Step 6	If Lip Treatment is wanted add finish x width of hood and depth (both sides) if applies	\$ <input type="text"/>
Step 7	If Banding is wanted add per band price x qty	\$ <input type="text"/>
Step 8	If rivets on bands are wanted add number of bands x per band price	\$ <input type="text"/>
Step 9	If pot rail is wanted add finish x width of hood and depth (both sides) if applies	\$ <input type="text"/>
Step 10	If Crown is wanted add finish x width of hood and depth (both sides) if applies	\$ <input type="text"/>
	Total	\$ <input type="text"/>

Custom size hoods are quoted by Modern-Aire



TABLE OF CONTENTS

Wall Mount Canopies

PS0404	5
PS0930	6
PS1010	7
PS1018	8
PS1030	9
PS1118	10
PS1130	11
PS1218	12
PS1230	13
PS1330	14
PS1518	15
PS1530	16
PMW1630	17
PS1630	18
PS1930	19
PS2030	20
PS2142	21
PS2218	22
PS2230	23
PS2330	24
PS2430	25
PS2618	26
PS2630	27
PS2918	28
PS2930	29
PS3118	30
PS3130	31
PS3230	32
PS3342	33
PS3542	34

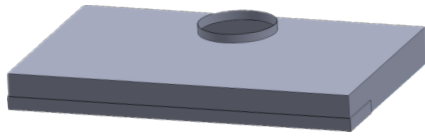
Island Mount Canopies

PS1418	35
PS1430	36
PS1830	37
PS2730	38
PMI1630	39
PSI1630	40
PSI1930	41
PS1718	42
PS1730	43
PS3018	44
PS3030	45
PSI3342	46
PSI3230	47
PSI3542	48

Liner Enclosures

PSL	49
PSBL	50
PML	51

PS0404 Professional Series Hood Information



Width 30", 36", 42", 48", 54", 60", 66"	3000K LED Lighting
Depth 21.5"	
Height 4"	The motor box needs a cabinet depth of 12"

1. PS0404 STANDARD SIZE PRICING

Model #	No Blower	200-600 CFM	900 & 1200 CFM
PS0404-030	\$1,800	\$2,000	N/A
PS0404-036	\$1,800	\$2,000	N/A
PS0404-042	\$2,000	\$2,300	\$3,000
PS0404-048	\$2,000	\$2,300	\$3,000
PS0404-054	\$2,300	\$2,600	\$3,300
PS0404-060	\$2,300	\$2,600	\$3,300
PS0404-066	\$2,700	\$3,000	\$3,700

2. AVAILABLE MATERIAL CHOICES

Brushed Stainless Steel (Polished Stainless Steel Band)
Gold on Brushed Stainless (Brushed Stainless Steel Band)
Traffic White (Brushed Stainless Steel Band)
Flat Black (Brushed Stainless Steel Band)
Other colors and sizes available for a custom charge

3. INTERNAL MOTOR OPTIONS

Item #	Description:
IN200	Internal 200cfm (7" duct)
IN325	Internal 325cfm (7" duct)
IN450	Internal 450cfm (7" duct)
IN600	Internal 600cfm (8" duct)
RE600	Recirculating internal 600cfm
IN900	Internal 900cfm (10" duct)
IN1200	Internal 1200cfm (10" duct)

4. EXTERNAL MOTOR OPTIONS

Item #	Description:	Each
EMIL800	Inline blower only (8" duct)	\$1,005
EMIL800K	Inliner blower with duct accessories.	\$1,350
EMIL1200	Inline blower only (10" duct)	\$1,265
EMIL1200K	Inliner blower with duct accessories.	\$1,770
EMIL800 = 836cfm EMIL1200 = 1266cfm		
EM1400 EC	External 1400cfm (10" duct)	\$1,400

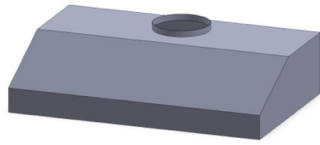
5. DUCT ACCESSORIES

Item #	Description:	Each
S8	Duct Silencer 8"	\$252
S10	Duct Silencer 10"	\$390
BD8	inline Damper 8"	\$48
BD10	inline Damper 10"	\$65
MC8	Mounting Clamps 8"Duct	\$45
MC10	Mounting Clamps 10"Duct	\$50

FREIGHT

Zone Prices
The freight charge is determined by what zone your state is in. Please refer to the zone map for the freight charge to your area.
Oversized hoods are subject to additional pricing

PS1010 Professional Series Hood Information



Width 30", 36", 42", 48", 54", 60", 66"	3000K LED Lighting
Bottom Depth 24" - Top Depth 12"	
Height 10"	
3" tall lip (front only)	

1. PS1010 STANDARD SIZE PRICING - BLOWER NOT INCLUDED

Model #	Powder Coat <small>Non standard colors are an additional fee</small>	Brushed Stainless 304 #4	Brushed Copper - Brushed Brass
PS1010-030	\$1,179	\$1,179	\$3,483
PS1010-036	\$1,179	\$1,179	\$3,630
PS1010-042	\$1,467	\$1,467	\$3,849
PS1010-048	\$1,815	\$1,815	\$4,501
PS1010-054	\$2,433	\$2,433	\$4,725
PS1010-060	\$2,571	\$2,571	\$5,007
PS1010-066	\$2,746	\$2,746	\$5,368

2. SPECIAL FINISH (OPTIONAL - ADD TO STEP 1)

Hammer Tone (HM1)	Polished (Mirror)	Smoked
\$1,115	\$1,115	\$1,115
\$1,115	\$1,115	\$1,115
\$1,115	\$1,115	\$1,115
\$1,115	\$1,115	\$1,115
\$1,595	\$1,355	\$1,235
\$1,595	\$1,355	\$1,235
\$1,595	\$1,355	\$1,235

3. INTERNAL MOTOR OPTIONS

Item #	Description:	Each
	No Blower	\$0
IN200	Internal 200cfm (7" duct)	\$500
IN325	Internal 325cfm (7" duct)	\$500
IN450	Internal 450cfm (7" duct)	\$500
IN600	Internal 600cfm (8" duct)	\$500
RE600	Recirculating internal 600cfm	\$600
IN900	Internal 900cfm (10" duct)	\$1,200
IN1200	Internal 1200cfm (10" duct)	\$1,200

4. EXTERNAL MOTOR OPTIONS

Item #	Description:	Each
EMIL800	Inline blower only (8" duct)	\$1,005
EMIL800K	Inliner blower with duct accessories.	\$1,350
EMIL1200	Inline blower only (10" duct)	\$1,265
EMIL1200K	Inliner blower with duct accessories.	\$1,770
EMIL800 = 836cfm EMIL1200 = 1266cfm		
EM1400 EC	External 1400cfm (10" duct)	\$1,400

5. DUCT ACCESSORIES

Item #	Description:	Each
S8	Duct Silencer 8"	\$252
S10	Duct Silencer 10"	\$390
BD8	inline Damper 8"	\$48
BD10	inline Damper 10"	\$65
MC8	Mounting Clamps 8"Duct	\$45
MC10	Mounting Clamps 10"Duct	\$50

6. HOOD ACCESSORIES (The pricing below is for all standard sizes, colors and finishes. Custom sizes and colors are available for an extra charge)

PRICED	Description:	PRICE
Per Inch	Crown 1 1/2" High	\$10
Per Inch	Tiered Crown - 3 1/2" High	\$12
Per Inch	Lip Treatment	\$12
Per Inch	Pot Rail	\$15
Each	Banding - 1 1/2" Wide	\$120
Per Band	Rivets - 4" Spacing	\$200
	CUSTOM DUCT LOCATION	\$240

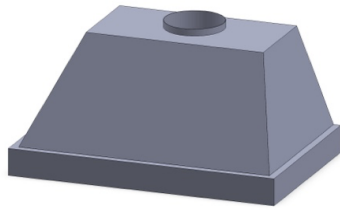
PRICED	HM1 Hammertone	PRICE
Per Inch	Crown 1 1/2" High	\$12
Per Inch	Tiered Crown 3 1/2" High	\$15
Per Inch	Lip Treatment	\$15
Each	Banding - 1 1/2" Wide	\$180

STANDARD COLORS	
Over 200 powder coat colors in stock	
STANDARD FINISHES	
Stainless Steel: Brushed, Polished, Jitterbug	
Copper: Brushed, Polished, Smoked	
Brass: Brushed, Polished, Smoked	
We also offer clear coats for an extra charge	

FREIGHT

Zone Prices	
The freight charge is determined by what zone your state is in. Please refer to the zone map for the freight charge to your area.	
Oversized hoods are subject to additional pricing	

Standing bands available upon request. Please contact us for more information.



PS1218 Professional Series Hood Information

Width 30", 36", 42", 48", 54", 60", 66"	Top Width 12" Less Than Bottom
Bottom Depth 24" - Top Depth 12"	3000K LED Lighting
Height 18"	
4" tall lip	

1. PS1218 STANDARD SIZE PRICING - BLOWER NOT INCLUDED

Model #	Powder Coat <small>Non standard colors are an additional fee</small>	Brushed Stainless 304 #4	Brushed Copper - Brushed Brass
PS1218-030	\$2,655	\$2,655	\$4,501
PS1218-036	\$2,852	\$2,852	\$4,758
PS1218-042	\$3,001	\$3,001	\$5,164
PS1218-048	\$3,563	\$3,563	\$6,209
PS1218-054	\$4,154	\$4,154	\$6,749
PS1218-060	\$4,449	\$4,449	\$7,038
PS1218-066	\$4,655	\$4,655	\$7,379

2. SPECIAL FINISH (OPTIONAL - ADD TO STEP 1)

Hammer Tone (HM1)	Polished (Mirror)	Smoked
\$1,115	\$1,115	\$1,115
\$1,115	\$1,115	\$1,115
\$1,115	\$1,115	\$1,115
\$1,115	\$1,115	\$1,115
\$1,595	\$1,355	\$1,235
\$1,595	\$1,355	\$1,235
\$1,595	\$1,355	\$1,235

3. INTERNAL MOTOR OPTIONS

Item #	Description:	Each
	No Blower	\$0
IN200	Internal 200cfm (7" duct)	\$500
IN325	Internal 325cfm (7" duct)	\$500
IN450	Internal 450cfm (7" duct)	\$500
IN600	Internal 600cfm (8" duct)	\$500
RE600	Recirculating internal 600cfm	\$600
IN900	Internal 900cfm (10" duct)	\$1,200
IN1200	Internal 1200cfm (10" duct)	\$1,200

4. EXTERNAL MOTOR OPTIONS

Item #	Description:	Each
EMIL800	Inline blower only (8" duct)	\$1,005
EMIL800K	Inliner blower with duct accessories.	\$1,350
EMIL1200	Inline blower only (10" duct)	\$1,265
EMIL1200K	Inliner blower with duct accessories.	\$1,770
EMIL800 = 836cfm EMIL1200 = 1266cfm		
EM1400 EC	External 1400cfm (10" duct)	\$1,400

5. DUCT ACCESSORIES

Item #	Description:	Each
S8	Duct Silencer 8"	\$252
S10	Duct Silencer 10"	\$390
BD8	inline Damper 8"	\$48
BD10	inline Damper 10"	\$65
MC8	Mounting Clamps 8"Duct	\$45
MC10	Mounting Clamps 10"Duct	\$50

6. HOOD ACCESSORIES (The pricing below is for all standard sizes, colors and finishes. Custom sizes and colors are available for an extra charge)

PRICED	Description:	PRICE
Per Inch	Crown 1 1/2" High	\$10
Per Inch	Tiered Crown - 3 1/2" High	\$12
Per Inch	Lip Treatment	\$12
Per Inch	Pot Rail	\$15
Each	Banding - 1 1/2" Wide	\$120
Per Band	Rivets - 4" Spacing	\$200
	CUSTOM DUCT LOCATION	\$240

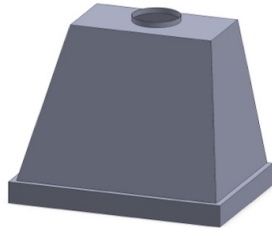
PRICED	HM1 Hammertone	PRICE
Per Inch	Crown 1 1/2" High	\$12
Per Inch	Tiered Crown 3 1/2" High	\$15
Per Inch	Lip Treatment	\$15
Each	Banding - 1 1/2" Wide	\$180

STANDARD COLORS	
Over 200 powder coat colors in stock	
STANDARD FINISHES	
Stainless Steel: Brushed, Polished, Jitterbug	
Copper: Brushed, Polished, Smoked	
Brass: Brushed, Polished, Smoked	
We also offer clear coats for an extra charge	

FREIGHT

Zone Prices	
The freight charge is determined by what zone your state is in. Please refer to the zone map for the freight charge to your area.	
Oversized hoods are subject to additional pricing	

Standing bands available upon request. Please contact us for more information.



PS1230 Professional Series Hood Information

Width 30", 36", 42", 48", 54", 60", 66"	Top Width 12" Less Than Bottom
Bottom Depth 24" - 12" Top Depth	3000K LED Lighting
Height 30"	
4" tall lip	

1. PS1230 STANDARD SIZE PRICING - BLOWER NOT INCLUDED

Model #	Powder Coat <small>Non standard colors are an additional fee</small>	Brushed Stainless 304 #4	Brushed Copper - Brushed Brass
PS1230-030	\$2,981	\$2,981	\$5,197
PS1230-036	\$3,236	\$3,236	\$5,570
PS1230-042	\$3,408	\$3,408	\$6,075
PS1230-048	\$4,049	\$4,049	\$7,263
PS1230-054	\$4,604	\$4,604	\$7,818
PS1230-060	\$4,879	\$4,879	\$8,087
PS1230-066	\$5,107	\$5,107	\$8,485

2. SPECIAL FINISH (OPTIONAL - ADD TO STEP 1)

Hammer Tone (HM1)	Polished (Mirror)	Smoked
\$1,115	\$1,115	\$1,115
\$1,115	\$1,115	\$1,115
\$1,115	\$1,115	\$1,115
\$1,115	\$1,115	\$1,115
\$1,595	\$1,355	\$1,235
\$1,595	\$1,355	\$1,235
\$1,595	\$1,355	\$1,235

3. INTERNAL MOTOR OPTIONS

Item #	Description:	Each
	No Blower	\$0
IN200	Internal 200cfm (7" duct)	\$500
IN325	Internal 325cfm (7" duct)	\$500
IN450	Internal 450cfm (7" duct)	\$500
IN600	Internal 600cfm (8" duct)	\$500
RE600	Recirculating internal 600cfm	\$600
IN900	Internal 900cfm (10" duct)	\$1,200
IN1200	Internal 1200cfm (10" duct)	\$1,200

4. EXTERNAL MOTOR OPTIONS

Item #	Description:	Each
EMIL800	Inline blower only (8" duct)	\$1,005
EMIL800K	Inliner blower with duct accessories.	\$1,350
EMIL1200	Inline blower only (10" duct)	\$1,265
EMIL1200K	Inliner blower with duct accessories.	\$1,770
EMIL800 = 836cfm EMIL1200 = 1266cfm		
EM1400 EC	External 1400cfm (10" duct)	\$1,400

5. DUCT ACCESSORIES

Item #	Description:	Each
S8	Duct Silencer 8"	\$252
S10	Duct Silencer 10"	\$390
BD8	inline Damper 8"	\$48
BD10	inline Damper 10"	\$65
MC8	Mounting Clamps 8"Duct	\$45
MC10	Mounting Clamps 10"Duct	\$50

6. HOOD ACCESSORIES (The pricing below is for all standard sizes, colors and finishes. Custom sizes and colors are available for an extra charge)

PRICED	Description:	PRICE
Per Inch	Crown 1 1/2" High	\$10
Per Inch	Tiered Crown - 3 1/2" High	\$12
Per Inch	Lip Treatment	\$12
Per Inch	Pot Rail	\$15
Each	Banding - 1 1/2" Wide	\$120
Per Band	Rivets - 4" Spacing	\$200
	CUSTOM DUCT LOCATION	\$240

PRICED	HM1 Hammertone	PRICE
Per Inch	Crown 1 1/2" High	\$12
Per Inch	Tiered Crown 3 1/2" High	\$15
Per Inch	Lip Treatment	\$15
Each	Banding - 1 1/2" Wide	\$180

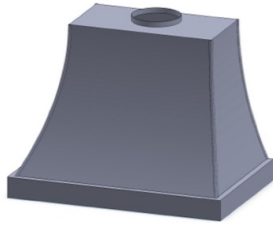
STANDARD COLORS
Over 200 powder coat colors in stock
STANDARD FINISHES
Stainless Steel: Brushed, Polished, Jitterbug
Copper: Brushed, Polished, Smoked
Brass: Brushed, Polished, Smoked
We also offer clear coats for an extra charge

FREIGHT

Zone Prices
The freight charge is determined by what zone your state is in. Please refer to the zone map for the freight charge to your area.
Oversized hoods are subject to additional pricing

Standing bands available upon request. Please contact us for more information.

Clipped corners available by request. Please contact us for more information.



PS1530 Professional Series Hood Information

Width 30", 36", 42", 48", 54", 60", 66"	Top Width is 12" Less Than Bottom
Bottom Depth 24" - Top Depth 12"	Hood Has Corner Seam Caps
Height 30"	3000K LED Lighting
4" tall lip	

1. PS1530 STANDARD SIZE PRICING - BLOWER NOT INCLUDED

Model #	Powder Coat <small>Non standard colors are an additional fee</small>	Brushed Stainless 304 #4	Brushed Copper - Brushed Brass
PS1530-030	\$3,807	\$3,807	\$6,183
PS1530-036	\$4,076	\$4,076	\$6,633
PS1530-042	\$4,314	\$4,314	\$7,237
PS1530-048	\$5,041	\$5,041	\$8,578
PS1530-054	\$5,691	\$5,691	\$9,227
PS1530-060	\$6,001	\$6,001	\$9,538
PS1530-066	\$6,289	\$6,289	\$10,012

2. SPECIAL FINISH (OPTIONAL - ADD TO STEP 1)

Hammer Tone (HM1)	Polished (Mirror)	Smoked
\$1,115	\$1,115	\$1,115
\$1,115	\$1,115	\$1,115
\$1,115	\$1,115	\$1,115
\$1,115	\$1,115	\$1,115
\$1,595	\$1,355	\$1,235
\$1,595	\$1,355	\$1,235
\$1,595	\$1,355	\$1,235

3. INTERNAL MOTOR OPTIONS

Item #	Description:	Each
	No Blower	\$0
IN200	Internal 200cfm (7" duct)	\$500
IN325	Internal 325cfm (7" duct)	\$500
IN450	Internal 450cfm (7" duct)	\$500
IN600	Internal 600cfm (8" duct)	\$500
RE600	Recirculating internal 600cfm	\$600
IN900	Internal 900cfm (10" duct)	\$1,200
IN1200	Internal 1200cfm (10" duct)	\$1,200

4. EXTERNAL MOTOR OPTIONS

Item #	Description:	Each
EMIL800	Inline blower only (8" duct)	\$1,005
EMIL800K	Inliner blower with duct accessories.	\$1,350
EMIL1200	Inline blower only (10" duct)	\$1,265
EMIL1200K	Inliner blower with duct accessories.	\$1,770
EMIL800 = 836cfm EMIL1200 = 1266cfm		
EM1400 EC	External 1400cfm (10" duct)	\$1,400

5. DUCT ACCESSORIES

Item #	Description:	Each
S8	Duct Silencer 8"	\$252
S10	Duct Silencer 10"	\$390
BD8	inline Damper 8"	\$48
BD10	inline Damper 10"	\$65
MC8	Mounting Clamps 8"Duct	\$45
MC10	Mounting Clamps 10"Duct	\$50

6. HOOD ACCESSORIES (The pricing below is for all standard sizes, colors and finishes. Custom sizes and colors are available for an extra charge)

PRICED	Description:	PRICE
Per Inch	Crown 1 1/2" High	\$10
Per Inch	Tiered Crown - 3 1/2" High	\$12
Per Inch	Lip Treatment	\$12
Per Inch	Pot Rail	\$15
Each	Banding - 1 1/2" Wide	\$120
Per Band	Rivets - 4" Spacing	\$200
	CUSTOM DUCT LOCATION	\$240

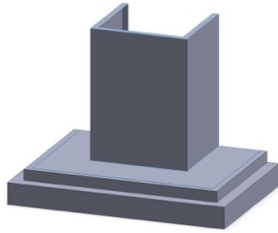
PRICED	HM1 Hammertone	PRICE
Per Inch	Crown 1 1/2" High	\$12
Per Inch	Tiered Crown 3 1/2" High	\$15
Per Inch	Lip Treatment	\$15
Each	Banding - 1 1/2" Wide	\$180
	Clipped corners available upon request. Please contact us for more information.	

STANDARD COLORS
Over 200 powder coat colors in stock
STANDARD FINISHES
Stainless Steel: Brushed, Polished, Jitterbug
Copper: Brushed, Polished, Smoked
Brass: Brushed, Polished, Smoked
We also offer clear coats for an extra charge

FREIGHT

Zone Prices
The freight charge is determined by what zone your state is in. Please refer to the zone map for the freight charge to your area.
Oversized hoods are subject to additional pricing

Clipped corners available upon request. Please contact us for more information.



PS1930 Professional Series Hood Information

Width 30", 36", 42", 48", 54", 60", 66"	1200cfm Has 24" Duct Cover
Bottom Depth 24" - DC Depth 14"	600cfm or Less Has 16" Wide Duct Cover
Height 30"	External Blower Has 16" Wide Duct Cover
6" tall Canopy (4" + 2")	3000K LED Lighting

1. PS1930 STANDARD SIZE PRICING - BLOWER NOT INCLUDED

Model #	Powder Coat <small>Non standard colors are an additional fee</small>	Brushed Stainless 304 #4	Brushed Copper - Brushed Brass
PS1930-030	\$3,115	\$3,115	\$6,712
PS1930-036	\$3,192	\$3,192	\$7,027
PS1930-042	\$3,289	\$3,289	\$7,284
PS1930-048	\$3,805	\$3,805	\$7,749
PS1930-054	\$4,229	\$4,229	\$8,263
PS1930-060	\$4,550	\$4,550	\$8,424
PS1930-066	\$5,000	\$5,000	\$8,886

2. SPECIAL FINISH (OPTIONAL - ADD TO STEP 1)

Hammer Tone (HM1)	Polished (Mirror)	Smoked
\$1,115	\$1,115	\$1,115
\$1,115	\$1,115	\$1,115
\$1,115	\$1,115	\$1,115
\$1,115	\$1,115	\$1,115
\$1,595	\$1,355	\$1,235
\$1,595	\$1,355	\$1,235
\$1,595	\$1,355	\$1,235

3. INTERNAL MOTOR OPTIONS

Item #	Description:	Each
	No Blower	\$0
IN200	Internal 200cfm (7" duct)	\$500
IN325	Internal 325cfm (7" duct)	\$500
IN450	Internal 450cfm (7" duct)	\$500
IN600	Internal 600cfm (8" duct)	\$500
RE600	Recirculating internal 600cfm	\$600
IN900	Internal 900cfm (10" duct)	\$1,200
IN1200	Internal 1200cfm (10" duct)	\$1,200

4. EXTERNAL MOTOR OPTIONS

Item #	Description:	Each
EMIL800	Inline blower only (8" duct)	\$1,005
EMIL800K	Inliner blower with duct accessories.	\$1,350
EMIL1200	Inline blower only (10" duct)	\$1,265
EMIL1200K	Inliner blower with duct accessories.	\$1,770
EMIL800 = 836cfm EMIL1200 = 1266cfm		
EM1400 EC	External 1400cfm (10" duct)	\$1,400

5. DUCT ACCESSORIES

Item #	Description:	Each
S8	Duct Silencer 8"	\$252
S10	Duct Silencer 10"	\$390
BD8	inline Damper 8"	\$48
BD10	inline Damper 10"	\$65
MC8	Mounting Clamps 8"Duct	\$45
MC10	Mounting Clamps 10"Duct	\$50

6. HOOD ACCESSORIES (The pricing below is for all standard sizes, colors and finishes. Custom sizes and colors are available for an extra charge)

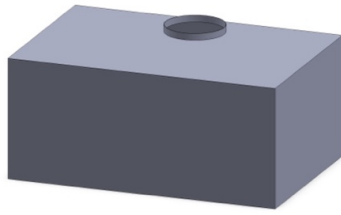
PRICED	Description:	PRICE
Per Inch	Crown 1 1/2" High	\$10
Per Inch	Tiered Crown - 3 1/2" High	\$12
Per Inch	Lip Treatment	\$12
Per Inch	Pot Rail	\$15
Each	Banding - 1 1/2" Wide	\$120
Per Band	Rivets - 4" Spacing	\$200
	CUSTOM DUCT LOCATION	\$240

PRICED	HM1 Hammertone	PRICE
Per Inch	Crown 1 1/2" High	\$12
Per Inch	Tiered Crown 3 1/2" High	\$15
Per Inch	Lip Treatment	\$15
Each	Banding - 1 1/2" Wide	\$180

STANDARD COLORS	
Over 200 powder coat colors in stock	
STANDARD FINISHES	
Stainless Steel: Brushed, Polished, Jitterbug	
Copper: Brushed, Polished, Smoked	
Brass: Brushed, Polished, Smoked	
Zinc: Brushed, Jitterbug, Anthra	
We also offer clear coats for an extra charge	

FREIGHT

Zone Prices	
The freight charge is determined by what zone your state is in. Please refer to the zone map for the freight charge to your area.	
Oversized hoods are subject to additional pricing	



PS2218 Professional Series Hood Information

Width 30", 36", 42", 48", 54", 60", 66"	3000K LED Lighting
Depth 24"	
Height 18"	

1. PS2218 STANDARD SIZE PRICING - BLOWER NOT INCLUDED

Model #	Powder Coat <small>Non standard colors are an additional fee</small>	Brushed Stainless 304 #4	Brushed Copper - Brushed Brass
PS2218-030	\$2,445	\$2,445	\$5,721
PS2218-036	\$2,560	\$2,560	\$6,003
PS2218-042	\$2,663	\$2,663	\$6,235
PS2218-048	\$3,315	\$3,315	\$7,293
PS2218-054	\$3,964	\$3,964	\$7,942
PS2218-060	\$4,268	\$4,268	\$8,246
PS2218-066	\$4,464	\$4,464	\$8,652

2. SPECIAL FINISH (OPTIONAL - ADD TO STEP 1)

Hammer Tone (HM1)	Polished (Mirror)	Smoked
\$1,115	\$1,115	\$1,115
\$1,115	\$1,115	\$1,115
\$1,115	\$1,115	\$1,115
\$1,115	\$1,115	\$1,115
\$1,595	\$1,355	\$1,235
\$1,595	\$1,355	\$1,235
\$1,595	\$1,355	\$1,235

3. INTERNAL MOTOR OPTIONS

Item #	Description:	Each
	No Blower	\$0
IN200	Internal 200cfm (7" duct)	\$500
IN325	Internal 325cfm (7" duct)	\$500
IN450	Internal 450cfm (7" duct)	\$500
IN600	Internal 600cfm (8" duct)	\$500
RE600	Recirculating internal 600cfm	\$600
IN900	Internal 900cfm (10" duct)	\$1,200
IN1200	Internal 1200cfm (10" duct)	\$1,200

4. EXTERNAL MOTOR OPTIONS

Item #	Description:	Each
EMIL800	Inline blower only (8" duct)	\$1,005
EMIL800K	Inliner blower with duct accessories.	\$1,350
EMIL1200	Inline blower only (10" duct)	\$1,265
EMIL1200K	Inliner blower with duct accessories.	\$1,770
EMIL800 = 836cfm EMIL1200 = 1266cfm		
EM1400 EC	External 1400cfm (10" duct)	\$1,400

5. DUCT ACCESSORIES

Item #	Description:	Each
S8	Duct Silencer 8"	\$252
S10	Duct Silencer 10"	\$390
BD8	inline Damper 8"	\$48
BD10	inline Damper 10"	\$65
MC8	Mounting Clamps 8"Duct	\$45
MC10	Mounting Clamps 10"Duct	\$50

6. HOOD ACCESSORIES (The pricing below is for all standard sizes, colors and finishes. Custom sizes and colors are available for an extra charge)

PRICED	Description:	PRICE
Per Inch	Crown 1 1/2" High	\$10
Per Inch	Tiered Crown - 3 1/2" High	\$12
Per Inch	Lip Treatment	\$12
Per Inch	Pot Rail	\$15
Each	Banding - 1 1/2" Wide	\$120
Per Band	Rivets - 4" Spacing	\$200
	CUSTOM DUCT LOCATION	\$240

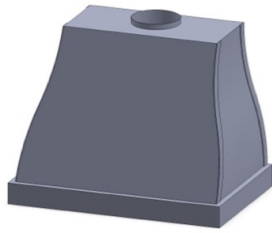
PRICED	HM1 Hammertone	PRICE
Per Inch	Crown 1 1/2" High	\$12
Per Inch	Tiered Crown 3 1/2" High	\$15
Per Inch	Lip Treatment	\$15
Each	Banding - 1 1/2" Wide	\$180

STANDARD COLORS	
Over 200 powder coat colors in stock	
STANDARD FINISHES	
Stainless Steel: Brushed, Polished, Jitterbug	
Copper: Brushed, Polished, Smoked	
Brass: Brushed, Polished, Smoked	
We also offer clear coats for an extra charge	

FREIGHT

Zone Prices	
The freight charge is determined by what zone your state is in. Please refer to the zone map for the freight charge to your area.	
Oversized hoods are subject to additional pricing	

Standing bands available upon request. Please contact us for more information.



PS2330 Professional Series Hood Information

Width 30", 36", 42", 48", 54", 60", 66"	Top Width 12" Less Than Bottom
Depth 24"	3000K LED Lighting
Height 30"	
4" tall lip	

1. PS2330 STANDARD SIZE PRICING - BLOWER NOT INCLUDED

Model #	Powder Coat <small>Non standard colors are an additional fee</small>	Brushed Stainless 304 #4	Brushed Copper - Brushed Brass
PS2330-030	\$4,368	\$4,368	\$6,508
PS2330-036	\$4,519	\$4,519	\$6,760
PS2330-042	\$4,676	\$4,676	\$7,107
PS2330-048	\$5,419	\$5,419	\$8,246
PS2330-054	\$6,055	\$6,055	\$8,923
PS2330-060	\$6,439	\$6,439	\$9,217
PS2330-066	\$6,735	\$6,735	\$9,654

2. SPECIAL FINISH (OPTIONAL - ADD TO STEP 1)

Hammer Tone (HM1)	Polished (Mirror)	Smoked
\$1,115	\$1,115	\$1,115
\$1,115	\$1,115	\$1,115
\$1,115	\$1,115	\$1,115
\$1,115	\$1,115	\$1,115
\$1,595	\$1,355	\$1,235
\$1,595	\$1,355	\$1,235
\$1,595	\$1,355	\$1,235

3. INTERNAL MOTOR OPTIONS

Item #	Description:	Each
	No Blower	\$0
IN200	Internal 200cfm (7" duct)	\$500
IN325	Internal 325cfm (7" duct)	\$500
IN450	Internal 450cfm (7" duct)	\$500
IN600	Internal 600cfm (8" duct)	\$500
RE600	Recirculating internal 600cfm	\$600
IN900	Internal 900cfm (10" duct)	\$1,200
IN1200	Internal 1200cfm (10" duct)	\$1,200

4. EXTERNAL MOTOR OPTIONS

Item #	Description:	Each
EMIL800	Inline blower only (8" duct)	\$1,005
EMIL800K	Inliner blower with duct accessories.	\$1,350
EMIL1200	Inline blower only (10" duct)	\$1,265
EMIL1200K	Inliner blower with duct accessories.	\$1,770
EMIL800 = 836cfm EMIL1200 = 1266cfm		
EM1400 EC	External 1400cfm (10" duct)	\$1,400

5. DUCT ACCESSORIES

Item #	Description:	Each
S8	Duct Silencer 8"	\$252
S10	Duct Silencer 10"	\$390
BD8	inline Damper 8"	\$48
BD10	inline Damper 10"	\$65
MC8	Mounting Clamps 8"Duct	\$45
MC10	Mounting Clamps 10"Duct	\$50

6. HOOD ACCESSORIES (The pricing below is for all standard sizes, colors and finishes. Custom sizes and colors are available for an extra charge)

PRICED	Description:	PRICE
Per Inch	Crown 1 1/2" High	\$10
Per Inch	Tiered Crown - 3 1/2" High	\$12
Per Inch	Lip Treatment	\$12
Per Inch	Pot Rail	\$15
Each	Banding - 1 1/2" Wide	\$120
Per Band	Rivets - 4" Spacing	\$200
	CUSTOM DUCT LOCATION	\$240

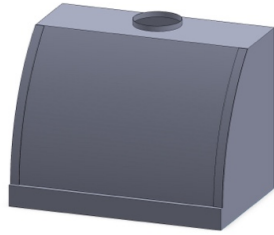
PRICED	HM1 Hammertone	PRICE
Per Inch	Crown 1 1/2" High	\$12
Per Inch	Tiered Crown 3 1/2" High	\$15
Per Inch	Lip Treatment	\$15
Each	Banding - 1 1/2" Wide	\$180

STANDARD COLORS	
Over 200 powder coat colors in stock	
STANDARD FINISHES	
Stainless Steel: Brushed, Polished, Jitterbug	
Copper: Brushed, Polished, Smoked	
Brass: Brushed, Polished, Smoked	
We also offer clear coats for an extra charge	

FREIGHT

Zone Prices	
The freight charge is determined by what zone your state is in. Please refer to the zone map for the freight charge to your area.	
Oversized hoods are subject to additional pricing	

Standing bands available upon request. Please contact us for more information.



PS2630 Professional Series Hood Information

Width 30", 36", 42", 48", 54", 60", 66"	Two vertical bands same finish included
Bottom Depth 24" - Top Depth 12"	3000K LED Lighting
Height 30"	
4" tall lip (front only)	

1. PS2630 STANDARD SIZE PRICING - BLOWER NOT INCLUDED

Model #	Powder Coat <small>Non standard colors are an additional fee</small>	Brushed Stainless 304 #4	Brushed Copper - Brushed Brass
PS2630-030	\$3,704	\$3,704	\$5,425
PS2630-036	\$3,858	\$3,858	\$5,644
PS2630-042	\$4,025	\$4,025	\$6,003
PS2630-048	\$4,689	\$4,689	\$7,038
PS2630-054	\$5,235	\$5,235	\$7,673
PS2630-060	\$5,649	\$5,649	\$7,908
PS2630-066	\$5,919	\$5,919	\$8,296

2. SPECIAL FINISH (OPTIONAL - ADD TO STEP 1)

Hammer Tone (HM1)	Polished (Mirror)	Smoked
\$1,115	\$1,115	\$1,115
\$1,115	\$1,115	\$1,115
\$1,115	\$1,115	\$1,115
\$1,115	\$1,115	\$1,115
\$1,595	\$1,355	\$1,235
\$1,595	\$1,355	\$1,235
\$1,595	\$1,355	\$1,235

3. INTERNAL MOTOR OPTIONS

Item #	Description:	Each
	No Blower	\$0
IN200	Internal 200cfm (7" duct)	\$500
IN325	Internal 325cfm (7" duct)	\$500
IN450	Internal 450cfm (7" duct)	\$500
IN600	Internal 600cfm (8" duct)	\$500
RE600	Recirculating internal 600cfm	\$600
IN900	Internal 900cfm (10" duct)	\$1,200
IN1200	Internal 1200cfm (10" duct)	\$1,200

4. EXTERNAL MOTOR OPTIONS

Item #	Description:	Each
EMIL800	Inline blower only (8" duct)	\$1,005
EMIL800K	Inliner blower with duct accessories.	\$1,350
EMIL1200	Inline blower only (10" duct)	\$1,265
EMIL1200K	Inliner blower with duct accessories.	\$1,770
EMIL800 = 836cfm EMIL1200 = 1266cfm		
EM1400 EC	External 1400cfm (10" duct)	\$1,400

5. DUCT ACCESSORIES

Item #	Description:	Each
S8	Duct Silencer 8"	\$252
S10	Duct Silencer 10"	\$390
BD8	inline Damper 8"	\$48
BD10	inline Damper 10"	\$65
MC8	Mounting Clamps 8"Duct	\$45
MC10	Mounting Clamps 10"Duct	\$50

6. HOOD ACCESSORIES (The pricing below is for all standard sizes, colors and finishes. Custom sizes and colors are available for an extra charge)

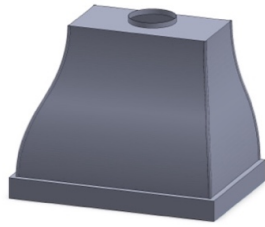
PRICED	Description:	PRICE
Per Inch	Crown 1 1/2" High	\$10
Per Inch	Tiered Crown - 3 1/2" High	\$12
Per Inch	Lip Treatment	\$12
Per Inch	Pot Rail	\$15
Each	Banding - 1 1/2" Wide	\$120
Per Band	Rivets - 4" Spacing	\$200
	CUSTOM DUCT LOCATION	\$240

PRICED	HM1 Hammertone	PRICE
Per Inch	Crown 1 1/2" High	\$12
Per Inch	Tiered Crown 3 1/2" High	\$15
Per Inch	Lip Treatment	\$15
Each	Banding - 1 1/2" Wide	\$180

STANDARD COLORS	
Over 200 powder coat colors in stock	
STANDARD FINISHES	
Stainless Steel: Brushed, Polished, Jitterbug	
Copper: Brushed, Polished, Smoked	
Brass: Brushed, Polished, Smoked	
We also offer clear coats for an extra charge	

FREIGHT

Zone Prices	
The freight charge is determined by what zone your state is in. Please refer to the zone map for the freight charge to your area.	
Oversized hoods are subject to additional pricing	



PS3230 Professional Series Hood Information

Width 30", 36", 42", 48", 54", 60", 66"	Top Width is 18" Less Than Bottom
Bottom Depth 24" - 12" top Depth	Hood has Corner Seam Caps
Height 30"	3000K LED Lighting
4" tall lip	

1. PS3230 STANDARD SIZE PRICING - BLOWER NOT INCLUDED

Model #	Powder Coat <small>Non standard colors are an additional fee</small>	Brushed Stainless 304 #4	Brushed Copper - Brushed Brass
PS3230-030	\$5,522	\$5,522	\$8,405
PS3230-036	\$5,646	\$5,646	\$8,734
PS3230-042	\$5,770	\$5,770	\$8,997
PS3230-048	\$6,686	\$6,686	\$10,335
PS3230-054	\$7,423	\$7,423	\$11,057
PS3230-060	\$7,777	\$7,777	\$11,418
PS3230-066	\$8,158	\$8,158	\$11,991

2. SPECIAL FINISH (OPTIONAL - ADD TO STEP 1)

Hammer Tone (HM1)	Polished (Mirror)	Smoked
\$1,115	\$1,115	\$1,115
\$1,115	\$1,115	\$1,115
\$1,115	\$1,115	\$1,115
\$1,115	\$1,115	\$1,115
\$1,595	\$1,355	\$1,235
\$1,595	\$1,355	\$1,235
\$1,595	\$1,355	\$1,235

3. INTERNAL MOTOR OPTIONS

Item #	Description:	Each
	No Blower	\$0
IN200	Internal 200cfm (7" duct)	\$500
IN325	Internal 325cfm (7" duct)	\$500
IN450	Internal 450cfm (7" duct)	\$500
IN600	Internal 600cfm (8" duct)	\$500
RE600	Recirculating internal 600cfm	\$600
IN900	Internal 900cfm (10" duct)	\$1,200
IN1200	Internal 1200cfm (10" duct)	\$1,200

4. EXTERNAL MOTOR OPTIONS

Item #	Description:	Each
EMIL800	Inline blower only (8" duct)	\$1,005
EMIL800K	Inliner blower with duct accessories.	\$1,350
EMIL1200	Inline blower only (10" duct)	\$1,265
EMIL1200K	Inliner blower with duct accessories.	\$1,770
EMIL800 = 836cfm EMIL1200 = 1266cfm		
EM1400 EC	External 1400cfm (10" duct)	\$1,400

5. DUCT ACCESSORIES

Item #	Description:	Each
S8	Duct Silencer 8"	\$252
S10	Duct Silencer 10"	\$390
BD8	inline Damper 8"	\$48
BD10	inline Damper 10"	\$65
MC8	Mounting Clamps 8"Duct	\$45
MC10	Mounting Clamps 10"Duct	\$50

6. HOOD ACCESSORIES (The pricing below is for all standard sizes, colors and finishes. Custom sizes and colors are available for an extra charge)

PRICED	Description:	PRICE
Per Inch	Crown 1 1/2" High	\$10
Per Inch	Tiered Crown - 3 1/2" High	\$12
Per Inch	Lip Treatment	\$12
Per Inch	Pot Rail	\$15
Each	Banding - 1 1/2" Wide	\$120
Per Band	Rivets - 4" Spacing	\$200
	CUSTOM DUCT LOCATION	\$240

PRICED	HM1 Hammertone	PRICE
Per Inch	Crown 1 1/2" High	\$12
Per Inch	Tiered Crown 3 1/2" High	\$15
Per Inch	Lip Treatment	\$15
Each	Banding - 1 1/2" Wide	\$180

STANDARD COLORS	
Over 200 powder coat colors in stock	
STANDARD FINISHES	
Stainless Steel: Brushed, Polished, Jitterbug	
Copper: Brushed, Polished, Smoked	
Brass: Brushed, Polished, Smoked	
We also offer clear coats for an extra charge	

FREIGHT

Zone Prices	
The freight charge is determined by what zone your state is in. Please refer to the zone map for the freight charge to your area.	
Oversized hoods are subject to additional pricing	



PS3342 Professional Series Hood Information

Width 30", 36", 42", 48", 54", 60", 66"	Vertical Bands and Corner Rivets Included
Bottom Depth 24" - 14" top Depth	Can be Made Without Quilted Pattern
Height 42"	Hood has Corner Seam Caps
6" Tall Lower Lip - 7" tall Top Crown	3000K LED Lighting

1. PS3342 STANDARD SIZE PRICING - BLOWER NOT INCLUDED

Model #	Powder Coat <small>Non standard colors are an additional fee</small>	Brushed Stainless 304 #4	Brushed Copper - Brushed Brass
PS3342-030	\$5,511	\$5,511	\$7,887
PS3342-036	\$5,787	\$5,787	\$8,337
PS3342-042	\$6,018	\$6,018	\$8,941
PS3342-048	\$6,699	\$6,699	\$10,235
PS3342-054	\$7,348	\$7,348	\$10,885
PS3342-060	\$7,659	\$7,659	\$11,195
PS3342-066	\$8,033	\$8,033	\$11,756

2. SPECIAL FINISH (OPTIONAL - ADD TO STEP 1)

Hammer Tone (HM1)	Polished (Mirror)	Smoked
\$1,115	\$1,115	\$1,115
\$1,115	\$1,115	\$1,115
\$1,115	\$1,115	\$1,115
\$1,115	\$1,115	\$1,115
\$1,595	\$1,355	\$1,235
\$1,595	\$1,355	\$1,235
\$1,595	\$1,355	\$1,235

3. INTERNAL MOTOR OPTIONS

Item #	Description:	Each
	No Blower	\$0
IN200	Internal 200cfm (7" duct)	\$500
IN325	Internal 325cfm (7" duct)	\$500
IN450	Internal 450cfm (7" duct)	\$500
IN600	Internal 600cfm (8" duct)	\$500
RE600	Recirculating internal 600cfm	\$600
IN900	Internal 900cfm (10" duct)	\$1,200
IN1200	Internal 1200cfm (10" duct)	\$1,200

4. EXTERNAL MOTOR OPTIONS

Item #	Description:	Each
EMIL800	Inline blower only (8" duct)	\$1,005
EMIL800K	Inliner blower with duct accessories.	\$1,350
EMIL1200	Inline blower only (10" duct)	\$1,265
EMIL1200K	Inliner blower with duct accessories.	\$1,770
EMIL800 = 836cfm EMIL1200 = 1266cfm		
EMIL1400K	External 1400cfm (10" duct)	\$1,400

5. DUCT ACCESSORIES

Item #	Description:	Each
S8	Duct Silencer 8"	\$252
S10	Duct Silencer 10"	\$390
BD8	inline Damper 8"	\$48
BD10	inline Damper 10"	\$65
MC8	Mounting Clamps 8"Duct	\$45
MC10	Mounting Clamps 10"Duct	\$50

6. HOOD ACCESSORIES (The pricing below is for all standard sizes, colors and finishes. Custom sizes and colors are available for an extra charge)

PRICED	Description:	PRICE
Per Inch	Crown 1 1/2" High	\$10
Per Inch	Tiered Crown - 3 1/2" High	\$12
Per Inch	Lip Treatment	\$12
Per Inch	Pot Rail	\$15
Each	Banding - 1 1/2" Wide	\$120
Per Band	Rivets - 4" Spacing	\$200
	CUSTOM DUCT LOCATION	\$240

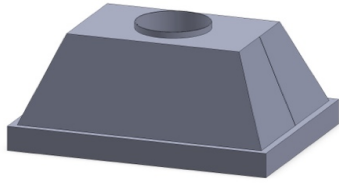
PRICED	HM1 Hammetone	PRICE
Per Inch	Crown 1 1/2" High	\$12
Per Inch	Tiered Crown 3 1/2" High	\$15
Per Inch	Lip Treatment	\$15
Each	Banding - 1 1/2" Wide	\$180

STANDARD COLORS	
Over 200 powder coat colors in stock	
STANDARD FINISHES	
Stainless Steel: Brushed, Polished, Jitterbug	
Copper: Brushed, Polished, Smoked	
Brass: Brushed, Polished, Smoked	
We also offer clear coats for an extra charge	

FREIGHT

Zone Prices	
The freight charge is determined by what zone your state is in. Please refer to the zone map for the freight charge to your area.	
Oversized hoods are subject to additional pricing	

Clipped corners available upon request. Please contact us for more information.



PS1418 Professional Series Hood Information

Width 30", 36", 42", 48", 54", 60", 66"	Top Width 12" Less Than Bottom
Bottom Depth 27" - Top Depth 15"	3000K LED Lighting
Height 18"	
4" tall lip	

1. PS1418 STANDARD SIZE PRICING - BLOWER NOT INCLUDED

Model #	Powder Coat <small>Non standard colors are an additional fee</small>	Brushed Stainless 304 #4	Brushed Copper - Brushed Brass
PS1418-030	\$3,053	\$3,053	\$5,035
PS1418-036	\$3,206	\$3,206	\$5,325
PS1418-042	\$3,385	\$3,385	\$5,743
PS1418-048	\$4,011	\$4,011	\$6,813
PS1418-054	\$4,658	\$4,658	\$7,462
PS1418-060	\$4,971	\$4,971	\$7,776
PS1418-066	\$5,420	\$5,420	\$8,226

2. SPECIAL FINISH (OPTIONAL - ADD TO STEP 1)

Hammer Tone (HM1)	Polished (Mirror)	Smoked
\$1,115	\$1,115	\$1,115
\$1,115	\$1,115	\$1,115
\$1,115	\$1,115	\$1,115
\$1,115	\$1,115	\$1,115
\$1,595	\$1,355	\$1,235
\$1,595	\$1,355	\$1,235
\$1,595	\$1,355	\$1,235

3. INTERNAL MOTOR OPTIONS

Item #	Description:	Each
	No Blower	\$0
IN200	Internal 200cfm (7" duct)	\$500
IN325	Internal 325cfm (7" duct)	\$500
IN450	Internal 450cfm (7" duct)	\$500
IN600	Internal 600cfm (8" duct)	\$500
RE600	Recirculating internal 600cfm	\$600
IN900	Internal 900cfm (10" duct)	\$1,200
IN1200	Internal 1200cfm (10" duct)	\$1,200

4. EXTERNAL MOTOR OPTIONS

Item #	Description:	Each
EMIL800	Inline blower only (8" duct)	\$1,005
EMIL800K	Inliner blower with duct accessories.	\$1,350
EMIL1200	Inline blower only (10" duct)	\$1,265
EMIL1200K	Inliner blower with duct accessories.	\$1,770
EMIL800 = 836cfm EMIL1200 = 1266cfm		
EM1400 EC	External 1400cfm (10" duct)	\$1,400

5. DUCT ACCESSORIES

Item #	Description:	Each
S8	Duct Silencer 8"	\$252
S10	Duct Silencer 10"	\$390
BD8	inline Damper 8"	\$48
BD10	inline Damper 10"	\$65
MC8	Mounting Clamps 8"Duct	\$45
MC10	Mounting Clamps 10"Duct	\$50

6. HOOD ACCESSORIES (The pricing below is for all standard sizes, colors and finishes. Custom sizes and colors are available for an extra charge)

PRICED	Description:	PRICE
Per Inch	Crown 1 1/2" High	\$10
Per Inch	Tiered Crown - 3 1/2" High	\$12
Per Inch	Lip Treatment	\$12
Per Inch	Pot Rail	\$15
Each	Banding - 1 1/2" Wide	\$120
Per Band	Rivets - 4" Spacing	\$200
	CUSTOM DUCT LOCATION	\$240

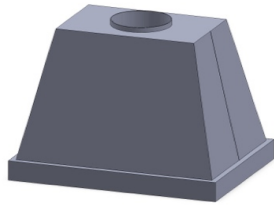
PRICED	HM1 Hammetone	PRICE
Per Inch	Crown 1 1/2" High	\$12
Per Inch	Tiered Crown 3 1/2" High	\$15
Per Inch	Lip Treatment	\$15
Each	Banding - 1 1/2" Wide	\$180

STANDARD COLORS
Over 200 powder coat colors in stock
STANDARD FINISHES
Stainless Steel: Brushed, Polished, Jitterbug
Copper: Brushed, Polished, Smoked
Brass: Brushed, Polished, Smoked
We also offer clear coats for an extra charge

FREIGHT

Zone Prices
The freight charge is determined by what zone your state is in. Please refer to the zone map for the freight charge to your area.
Oversized hoods are subject to additional pricing

Standing bands available upon request. Please contact us for more information.



PS1430 Professional Series Hood Information

Width 30", 36", 42", 48", 54", 60", 66"	Top Width is 12" Less Than Bottom
Bottom Depth 27" - 15" top Depth	3000K LED Lighting
Height 30"	
4" tall lip	

1. PS1430 STANDARD SIZE PRICING - BLOWER NOT INCLUDED

Model #	Powder Coat <small>Non standard colors are an additional fee</small>	Brushed Stainless 304 #4	Brushed Copper - Brushed Brass
PS1430-030	\$3,628	\$3,628	\$6,240
PS1430-036	\$3,903	\$3,903	\$6,615
PS1430-042	\$4,118	\$4,118	\$7,201
PS1430-048	\$4,847	\$4,847	\$8,553
PS1430-054	\$5,490	\$5,490	\$9,196
PS1430-060	\$5,804	\$5,804	\$9,575
PS1430-066	\$6,254	\$6,254	\$10,025

2. SPECIAL FINISH (OPTIONAL - ADD TO STEP 1)

Hammer Tone (HM1)	Polished (Mirror)	Smoked
\$1,115	\$1,115	\$1,115
\$1,115	\$1,115	\$1,115
\$1,115	\$1,115	\$1,115
\$1,115	\$1,115	\$1,115
\$1,595	\$1,355	\$1,235
\$1,595	\$1,355	\$1,235
\$1,595	\$1,355	\$1,235

3. INTERNAL MOTOR OPTIONS

Item #	Description:	Each
	No Blower	\$0
IN200	Internal 200cfm (7" duct)	\$500
IN325	Internal 325cfm (7" duct)	\$500
IN450	Internal 450cfm (7" duct)	\$500
IN600	Internal 600cfm (8" duct)	\$500
RE600	Recirculating internal 600cfm	\$600
IN900	Internal 900cfm (10" duct)	\$1,200
IN1200	Internal 1200cfm (10" duct)	\$1,200

4. EXTERNAL MOTOR OPTIONS

Item #	Description:	Each
EMIL800	Inline blower only (8" duct)	\$1,005
EMIL800K	Inliner blower with duct accessories.	\$1,350
EMIL1200	Inline blower only (10" duct)	\$1,265
EMIL1200K	Inliner blower with duct accessories.	\$1,770
EMIL800 = 836cfm EMIL1200 = 1266cfm		
EM1400 EC	External 1400cfm (10" duct)	\$1,400

5. DUCT ACCESSORIES

Item #	Description:	Each
S8	Duct Silencer 8"	\$252
S10	Duct Silencer 10"	\$390
BD8	inline Damper 8"	\$48
BD10	inline Damper 10"	\$65
MC8	Mounting Clamps 8"Duct	\$45
MC10	Mounting Clamps 10"Duct	\$50

6. HOOD ACCESSORIES (The pricing below is for all standard sizes, colors and finishes. Custom sizes and colors are available for an extra charge)

PRICED	Description:	PRICE
Per Inch	Crown 1 1/2" High	\$10
Per Inch	Tiered Crown - 3 1/2" High	\$12
Per Inch	Lip Treatment	\$12
Per Inch	Pot Rail	\$15
Each	Banding - 1 1/2" Wide	\$120
Per Band	Rivets - 4" Spacing	\$200
	CUSTOM DUCT LOCATION	\$240

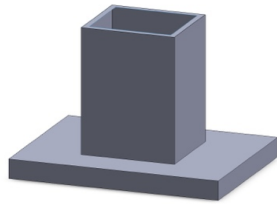
PRICED	HM1 Hammertone	PRICE
Per Inch	Crown 1 1/2" High	\$12
Per Inch	Tiered Crown 3 1/2" High	\$15
Per Inch	Lip Treatment	\$15
Each	Banding - 1 1/2" Wide	\$180

STANDARD COLORS	
Over 200 powder coat colors in stock	
STANDARD FINISHES	
Stainless Steel: Brushed, Polished, Jitterbug	
Copper: Brushed, Polished, Smoked	
Brass: Brushed, Polished, Smoked	
We also offer clear coats for an extra charge	

FREIGHT

Zone Prices	
The freight charge is determined by what zone your state is in. Please refer to the zone map for the freight charge to your area.	
Oversized hoods are subject to additional pricing	

Standing bands available upon request. Please contact us for more information.



PMI1630 Professional Series Hood Information

Width 30", 36", 42", 48", 54", 60", 66"	1200cfm Has 24" Wide Duct Cover
Bottom Depth 27" - DC Depth 14"	600cfm or Less Has 16" Wide Duct Cover
Height 30"	External Blower Has 16" Wide Duct Cover
4" tall Canopy	Standard Mesh Filters
	3000K LED Lighting

1. PMI1630 STANDARD SIZE PRICING - BLOWER NOT INCLUDED

Model #	Powder Coat <small>Non standard colors are an additional fee</small>	Brushed Stainless 304 #4	Brushed Copper - Brushed Brass
PMI1630-030	\$2,756	\$2,756	\$6,269
PMI1630-036	\$2,768	\$2,768	\$6,281
PMI1630-042	\$2,822	\$2,822	\$6,335
PMI1630-048	\$3,241	\$3,241	\$7,018
PMI1630-054	\$3,884	\$3,884	\$7,654
PMI1630-060	\$4,199	\$4,199	\$7,969
PMI1630-066	\$4,648	\$4,648	\$8,419

2. SPECIAL FINISH (OPTIONAL - ADD TO STEP 1)

Hammer Tone (HM1)	Polished (Mirror)	Smoked
\$1,115	\$1,115	\$1,115
\$1,115	\$1,115	\$1,115
\$1,115	\$1,115	\$1,115
\$1,115	\$1,115	\$1,115
\$1,595	\$1,355	\$1,235
\$1,595	\$1,355	\$1,235
\$1,595	\$1,355	\$1,235

3. INTERNAL MOTOR OPTIONS

Item #	Description:	Each
	No Blower	\$0
IN200	Internal 200cfm (7" duct)	\$500
IN325	Internal 325cfm (7" duct)	\$500
IN450	Internal 450cfm (7" duct)	\$500
IN600	Internal 600cfm (8" duct)	\$500
RE600	Recirculating internal 600cfm	\$600
IN900	Internal 900cfm (10" duct)	\$1,200
IN1200	Internal 1200cfm (10" duct)	\$1,200

4. EXTERNAL MOTOR OPTIONS

Item #	Description:	Each
EMIL800	Inline blower only (8" duct)	\$1,005
EMIL800K	Inliner blower with duct accessories.	\$1,350
EMIL1200	Inline blower only (10" duct)	\$1,265
EMIL1200K	Inliner blower with duct accessories.	\$1,770
EMIL800 = 836cfm EMIL1200 = 1266cfm		
EM1400 EC	External 1400cfm (10" duct)	\$1,400

5. DUCT ACCESSORIES

Item #	Description:	Each
S8	Duct Silencer 8"	\$252
S10	Duct Silencer 10"	\$390
BD8	inline Damper 8"	\$48
BD10	inline Damper 10"	\$65
MC8	Mounting Clamps 8"Duct	\$45
MC10	Mounting Clamps 10"Duct	\$50

6. HOOD ACCESSORIES (The pricing below is for all standard sizes, colors and finishes. Custom sizes and colors are available for an extra charge)

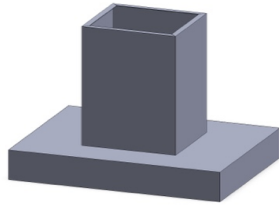
PRICED	Description:	PRICE
Per Inch	Crown 1 1/2" High	\$10
Per Inch	Tiered Crown - 3 1/2" High	\$12
Per Inch	Lip Treatment	\$12
Per Inch	Pot Rail	\$15
Each	Banding - 1 1/2" Wide	\$120
Per Band	Rivets - 4" Spacing	\$200
	CUSTOM DUCT LOCATION	\$240

PRICED	HM1 Hammertone	PRICE
Per Inch	Crown 1 1/2" High	\$12
Per Inch	Tiered Crown 3 1/2" High	\$15
Per Inch	Lip Treatment	\$15
Each	Banding - 1 1/2" Wide	\$180

STANDARD COLORS	
Over 200 powder coat colors in stock	
STANDARD FINISHES	
Stainless Steel: Brushed, Polished, Jitterbug	
Copper: Brushed, Polished, Smoked	
Brass: Brushed, Polished, Smoked	
We also offer clear coats for an extra charge	

FREIGHT

Zone Prices	
The freight charge is determined by what zone your state is in. Please refer to the zone map for the freight charge to your area.	
Oversized hoods are subject to additional pricing	



PSI1630 Professional Series Hood Information

Width 30", 36", 42", 48", 54", 60", 66"	1200cfm Has 24" Wide Duct Cover
Bottom Depth 27" - DC Depth 14"	600cfm or Less Has 16" Wide Duct Cover
Height 30"	External Blower Has 16" Wide Duct Cover
6" Tall Canopy	3000K LED Lighting

1. PSI1630 STANDARD SIZE PRICING - BLOWER NOT INCLUDED

Model #	Powder Coat <small>Non standard colors are an additional fee</small>	Brushed Stainless 304 #4	Brushed Copper - Brushed Brass
PSI1630-030	\$3,306	\$3,306	\$6,825
PSI1630-036	\$3,318	\$3,318	\$6,836
PSI1630-042	\$3,372	\$3,372	\$6,884
PSI1630-048	\$3,832	\$3,832	\$7,609
PSI1630-054	\$4,475	\$4,475	\$8,252
PSI1630-060	\$4,789	\$4,789	\$8,566
PSI1630-066	\$5,239	\$5,239	\$9,016

2. SPECIAL FINISH (OPTIONAL - ADD TO STEP 1)

Hammer Tone (HM1)	Polished (Mirror)	Smoked
\$1,115	\$1,115	\$1,115
\$1,115	\$1,115	\$1,115
\$1,115	\$1,115	\$1,115
\$1,115	\$1,115	\$1,115
\$1,595	\$1,355	\$1,235
\$1,595	\$1,355	\$1,235
\$1,595	\$1,355	\$1,235

3. INTERNAL MOTOR OPTIONS

Item #	Description:	Each
	No Blower	\$0
IN200	Internal 200cfm (7" duct)	\$500
IN325	Internal 325cfm (7" duct)	\$500
IN450	Internal 450cfm (7" duct)	\$500
IN600	Internal 600cfm (8" duct)	\$500
RE600	Recirculating internal 600cfm	\$600
IN900	Internal 900cfm (10" duct)	\$1,200
IN1200	Internal 1200cfm (10" duct)	\$1,200

4. EXTERNAL MOTOR OPTIONS

Item #	Description:	Each
EMIL800	Inline blower only (8" duct)	\$1,005
EMIL800K	Inliner blower with duct accessories.	\$1,350
EMIL1200	Inline blower only (10" duct)	\$1,265
EMIL1200K	Inliner blower with duct accessories.	\$1,770
EMIL800 = 836cfm EMIL1200 = 1266cfm		
EM1400 EC	External 1400cfm (10" duct)	\$1,400

5. DUCT ACCESSORIES

Item #	Description:	Each
S8	Duct Silencer 8"	\$252
S10	Duct Silencer 10"	\$390
BD8	inline Damper 8"	\$48
BD10	inline Damper 10"	\$65
MC8	Mounting Clamps 8"Duct	\$45
MC10	Mounting Clamps 10"Duct	\$50

6. HOOD ACCESSORIES (The pricing below is for all standard sizes, colors and finishes. Custom sizes and colors are available for an extra charge)

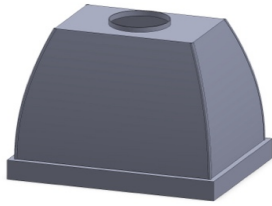
PRICED	Description:	PRICE
Per Inch	Crown 1 1/2" High	\$10
Per Inch	Tiered Crown - 3 1/2" High	\$12
Per Inch	Lip Treatment	\$12
Per Inch	Pot Rail	\$15
Each	Banding - 1 1/2" Wide	\$120
Per Band	Rivets - 4" Spacing	\$200
	CUSTOM DUCT LOCATION	\$240

PRICED	HM1 Hammertone	PRICE
Per Inch	Crown 1 1/2" High	\$12
Per Inch	Tiered Crown 3 1/2" High	\$15
Per Inch	Lip Treatment	\$15
Each	Banding - 1 1/2" Wide	\$180

STANDARD COLORS	
Over 200 powder coat colors in stock	
STANDARD FINISHES	
Stainless Steel: Brushed, Polished, Jitterbug	
Copper: Brushed, Polished, Smoked	
Brass: Brushed, Polished, Smoked	
We also offer clear coats for an extra charge	

FREIGHT

Zone Prices	
The freight charge is determined by what zone your state is in. Please refer to the zone map for the freight charge to your area.	
Oversized hoods are subject to additional pricing	



PS3030 Professional Series Hood Information

Width 30", 36", 42", 48", 54", 60", 66"	Top Width is 12" Less Than Bottom
Bottom Depth 27" - Top Depth is 15"	Hood has Corner Seam Caps
Height 30"	3000K LED Lighting
4" tall lip	

1. PS3030 STANDARD SIZE PRICING - BLOWER NOT INCLUDED

Model #	Powder Coat <small>Non standard colors are an additional fee</small>	Brushed Stainless 304 #4	Brushed Copper - Brushed Brass
PS3030-030	\$5,128	\$5,128	\$7,667
PS3030-036	\$5,235	\$5,235	\$7,738
PS3030-042	\$5,337	\$5,337	\$7,930
PS3030-048	\$6,170	\$6,170	\$9,703
PS3030-054	\$6,813	\$6,813	\$10,487
PS3030-060	\$7,076	\$7,076	\$10,667
PS3030-066	\$7,526	\$7,526	\$11,116

2. SPECIAL FINISH (OPTIONAL - ADD TO STEP 1)

Hammer Tone (HM1)	Polished (Mirror)	Smoked
\$1,115	\$1,115	\$1,115
\$1,115	\$1,115	\$1,115
\$1,115	\$1,115	\$1,115
\$1,115	\$1,115	\$1,115
\$1,595	\$1,355	\$1,235
\$1,595	\$1,355	\$1,235
\$1,595	\$1,355	\$1,235

3. INTERNAL MOTOR OPTIONS

Item #	Description:	Each
	No Blower	\$0
IN200	Internal 200cfm (7" duct)	\$500
IN325	Internal 325cfm (7" duct)	\$500
IN450	Internal 450cfm (7" duct)	\$500
IN600	Internal 600cfm (8" duct)	\$500
RE600	Recirculating internal 600cfm	\$600
IN900	Internal 900cfm (10" duct)	\$1,200
IN1200	Internal 1200cfm (10" duct)	\$1,200

4. EXTERNAL MOTOR OPTIONS

Item #	Description:	Each
EMIL800	Inline blower only (8" duct)	\$1,005
EMIL800K	Inliner blower with duct accessories.	\$1,350
EMIL1200	Inline blower only (10" duct)	\$1,265
EMIL1200K	Inliner blower with duct accessories.	\$1,770
EMIL800 = 836cfm EMIL1200 = 1266cfm		
EM1400 EC	External 1400cfm (10" duct)	\$1,400

5. DUCT ACCESSORIES

Item #	Description:	Each
S8	Duct Silencer 8"	\$252
S10	Duct Silencer 10"	\$390
BD8	inline Damper 8"	\$48
BD10	inline Damper 10"	\$65
MC8	Mounting Clamps 8"Duct	\$45
MC10	Mounting Clamps 10"Duct	\$50

6. HOOD ACCESSORIES (The pricing below is for all standard sizes, colors and finishes. Custom sizes and colors are available for an extra charge)

PRICED	Description:	PRICE
Per Inch	Crown 1 1/2" High	\$10
Per Inch	Tiered Crown - 3 1/2" High	\$12
Per Inch	Lip Treatment	\$12
Per Inch	Pot Rail	\$15
Each	Banding - 1 1/2" Wide	\$120
Per Band	Rivets - 4" Spacing	\$200
	CUSTOM DUCT LOCATION	\$240

PRICED	HM1 Hammertone	PRICE
Per Inch	Crown 1 1/2" High	\$12
Per Inch	Tiered Crown 3 1/2" High	\$15
Per Inch	Lip Treatment	\$15
Each	Banding - 1 1/2" Wide	\$180

STANDARD COLORS	
Over 200 powder coat colors in stock	
STANDARD FINISHES	
Stainless Steel: Brushed, Polished, Jitterbug	
Copper: Brushed, Polished, Smoked	
Brass: Brushed, Polished, Smoked	
We also offer clear coats for an extra charge	

FREIGHT

Zone Prices	
The freight charge is determined by what zone your state is in. Please refer to the zone map for the freight charge to your area.	
Oversized hoods are subject to additional pricing	



PSI3342 Professional Series Hood Information

Width 30", 36", 42", 48", 54", 60", 66"	Hood has Corner Seam Caps
Bottom Depth 27"	Vertical Bands and Corner Rivets Included
Height 42"	Can be Made Without Quilted Pattern
6" tall bottom lip - 7" tall top crown	3000K LED Lighting

1. PSI3342 STANDARD SIZE PRICING - BLOWER NOT INCLUDED

Model #	Powder Coat <small>Non standard colors are an additional fee</small>	Brushed Stainless 304 #4	Brushed Copper - Brushed Brass
PSI3342-030	\$6,767	\$6,767	\$9,738
PSI3342-036	\$7,112	\$7,112	\$10,300
PSI3342-042	\$7,401	\$7,401	\$11,054
PSI3342-048	\$8,243	\$8,243	\$12,663
PSI3342-054	\$9,054	\$9,054	\$13,475
PSI3342-060	\$9,443	\$9,443	\$13,863
PSI3342-066	\$9,911	\$9,911	\$14,564

2. SPECIAL FINISH (OPTIONAL - ADD TO STEP 1)

Hammer Tone (HM1)	Polished (Mirror)	Smoked
\$1,115	\$1,115	\$1,115
\$1,115	\$1,115	\$1,115
\$1,115	\$1,115	\$1,115
\$1,115	\$1,115	\$1,115
\$1,595	\$1,355	\$1,235
\$1,595	\$1,355	\$1,235
\$1,595	\$1,355	\$1,235

3. INTERNAL MOTOR OPTIONS

Item #	Description:	Each
	No Blower	\$0
IN200	Internal 200cfm (7" duct)	\$500
IN325	Internal 325cfm (7" duct)	\$500
IN450	Internal 450cfm (7" duct)	\$500
IN600	Internal 600cfm (8" duct)	\$500
RE600	Recirculating internal 600cfm	\$600
IN900	Internal 900cfm (10" duct)	\$1,200
IN1200	Internal 1200cfm (10" duct)	\$1,200

4. EXTERNAL MOTOR OPTIONS

Item #	Description:	Each
EMIL800	Inline blower only (8" duct)	\$1,005
EMIL800K	Inliner blower with duct accessories.	\$1,350
EMIL1200	Inline blower only (10" duct)	\$1,265
EMIL1200K	Inliner blower with duct accessories.	\$1,770
EMIL800 = 836cfm EMIL1200 = 1266cfm		
EM1400 EC	External 1400cfm (10" duct)	\$1,400

5. DUCT ACCESSORIES

Item #	Description:	Each
S8	Duct Silencer 8"	\$252
S10	Duct Silencer 10"	\$390
BD8	inline Damper 8"	\$48
BD10	inline Damper 10"	\$65
MC8	Mounting Clamps 8"Duct	\$45
MC10	Mounting Clamps 10"Duct	\$50

6. HOOD ACCESSORIES (The pricing below is for all standard sizes, colors and finishes. Custom sizes and colors are available for an extra charge)

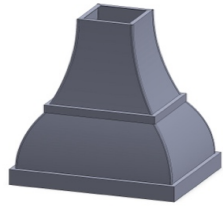
PRICED	Description:	PRICE
Per Inch	Crown 1 1/2" High	\$10
Per Inch	Tiered Crown - 3 1/2" High	\$12
Per Inch	Lip Treatment	\$12
Per Inch	Pot Rail	\$15
Each	Banding - 1 1/2" Wide	\$120
Per Band	Rivets - 4" Spacing	\$200
	CUSTOM DUCT LOCATION	\$240

PRICED	HM1 Hammertone	PRICE
Per Inch	Crown 1 1/2" High	\$12
Per Inch	Tiered Crown 3 1/2" High	\$15
Per Inch	Lip Treatment	\$15
Each	Banding - 1 1/2" Wide	\$180

STANDARD COLORS	
Over 200 powder coat colors in stock	
STANDARD FINISHES	
Stainless Steel: Brushed, Polished, Jitterbug	
Copper: Brushed, Polished, Smoked	
Brass: Brushed, Polished, Smoked	
We also offer clear coats for an extra charge	

FREIGHT

Zone Prices	
The freight charge is determined by what zone your state is in. Please refer to the zone map for the freight charge to your area.	
Oversized hoods are subject to additional pricing	



PSI3542 Professional Series Hood Information

Width 30", 36", 42", 48", 54", 60", 66"	Hood Has Corner Seam Caps
Depth 27"	3000K LED Lighting
Height 42"	
4" tall lip - 2" tall trim in center	

1. PSI3542 STANDARD SIZE PRICING - BLOWER NOT INCLUDED

Model #	Powder Coat Non standard colors are an additional fee	Brushed Stainless 304 #4	Brushed Copper - Brushed Brass
PSI3542-030	\$9,127	\$9,127	\$12,112
PSI3542-036	\$9,218	\$9,218	\$12,203
PSI3542-042	\$9,384	\$9,384	\$12,437
PSI3542-048	\$10,383	\$10,383	\$14,543
PSI3542-054	\$11,139	\$11,139	\$15,299
PSI3542-060	\$11,512	\$11,512	\$15,673
PSI3542-066	\$11,935	\$11,935	\$16,315

2. SPECIAL FINISH (OPTIONAL - ADD TO STEP 1)

Hammer Tone (HM1)	Polished (Mirror)	Smoked
\$1,115	\$1,115	\$1,115
\$1,115	\$1,115	\$1,115
\$1,115	\$1,115	\$1,115
\$1,115	\$1,115	\$1,115
\$1,595	\$1,355	\$1,235
\$1,595	\$1,355	\$1,235
\$1,595	\$1,355	\$1,235

3. INTERNAL MOTOR OPTIONS

Item #	Description:	Each
	No Blower	\$0
IN200	Internal 200cfm (7" duct)	\$500
IN325	Internal 325cfm (7" duct)	\$500
IN450	Internal 450cfm (7" duct)	\$500
IN600	Internal 600cfm (8" duct)	\$500
RE600	Recirculating internal 600cfm	\$600
IN900	Internal 900cfm (10" duct)	\$1,200
IN1200	Internal 1200cfm (10" duct)	\$1,200

4. EXTERNAL MOTOR OPTIONS

Item #	Description:	Each
EMIL800	Inline blower only (8" duct)	\$1,005
EMIL800K	Inliner blower with duct accessories.	\$1,350
EMIL1200	Inline blower only (10" duct)	\$1,265
EMIL1200K	Inliner blower with duct accessories.	\$1,770
EMIL800 = 836cfm EMIL1200 = 1266cfm		
EM1400 EC	External 1400cfm (10" duct)	\$1,400

5. DUCT ACCESSORIES

Item #	Description:	Each
S8	Duct Silencer 8"	\$252
S10	Duct Silencer 10"	\$390
BD8	inline Damper 8"	\$48
BD10	inline Damper 10"	\$65
MC8	Mounting Clamps 8"Duct	\$45
MC10	Mounting Clamps 10"Duct	\$50

6. HOOD ACCESSORIES (The pricing below is for all standard sizes, colors and finishes. Custom sizes and colors are available for an extra charge)

PRICED	Description:	PRICE
Per Inch	Crown 1 1/2" High	\$10
Per Inch	Tiered Crown - 3 1/2" High	\$12
Per Inch	Lip Treatment	\$12
Per Inch	Pot Rail	\$15
Each	Banding - 1 1/2" Wide	\$120
Per Band	Rivets - 4" Spacing	\$200
	CUSTOM DUCT LOCATION	\$240

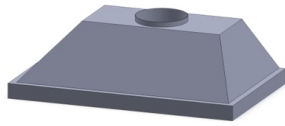
PRICED	HM1 Hammertone	PRICE
Per Inch	Crown 1 1/2" High	\$12
Per Inch	Tiered Crown 3 1/2" High	\$15
Per Inch	Lip Treatment	\$15
Each	Banding - 1 1/2" Wide	\$180

STANDARD COLORS	
Over 200 powder coat colors in stock	
STANDARD FINISHES	
Stainless Steel: Brushed, Polished, Jitterbug	
Copper: Brushed, Polished, Smoked	
Brass: Brushed, Polished, Smoked	
We also offer clear coats for an extra charge	

FREIGHT

Zone Prices	
	The freight charge is determined by what zone your state is in. Please refer to the zone map for the freight charge to your area.
	Oversized hoods are subject to additional charges

Professional Series Liner Information



Baffle Filters Included	U.L. Listed for Indoor & Outdoor use
Top Vent Standard - Duct Collar Included	Custom Sizes Available
Variable Fan and Light Switch (Samp)	Mounting Height 30" - 36" above cook top
3000K LED Lighting	

PSL19- 1 (400cfm)		PSL19- 2 (600cfm)		PSL19- 3 (1200cfm)		PSL19- 0 (NO BLOWER)	
Model #	400 CFM	Model #	600 CFM	Model #	1200 CFM	Model #	0 CFM
PSL19 - 128	\$1,644	PSL19 - 228	\$1,644	PSL19 - 328	N/A	PSL19 - 028	\$1,423
PSL19 - 134	\$1,714	PSL19 - 234	\$1,714	PSL19 - 334	N/A	PSL19 - 034	\$1,493
PSL19 - 140	\$1,778	PSL19 - 240	\$1,778	PSL19 - 340	\$2,301	PSL19 - 040	\$1,556
PSL19 - 146	\$1,838	PSL19 - 246	\$1,838	PSL19 - 346	\$2,427	PSL19 - 046	\$1,617
PSL19 - 152	\$2,357	PSL19 - 252	\$2,357	PSL19 - 352	\$3,110	PSL19 - 052	\$2,135
PSL19 - 158	\$2,628	PSL19 - 258	\$2,628	PSL19 - 358	\$3,381	PSL19 - 058	\$2,407
12" tall (+ MB) x 19 1/4" deep		12" tall (+ MB) x 19 1/4" deep		12" tall (+ MB) x 19 1/4" deep		12" tall x 19 1/4" deep	

PSL22- 1 (400cfm)		PSL22- 2 (600cfm)		PSL22- 3 (1200cfm)		PSL22- 0 (NO BLOWER)	
Model #	400 CFM	Model #	600 CFM	Model #	1200 CFM	Model #	0 CFM
PSL22 - 128	\$1,644	PSL22 - 228	\$1,644	PSL22 - 328	N/A	PSL22 - 028	\$1,423
PSL22 - 134	\$1,714	PSL22 - 234	\$1,714	PSL22 - 334	N/A	PSL22 - 034	\$1,493
PSL22 - 140	\$1,778	PSL22 - 240	\$1,778	PSL22 - 340	\$2,301	PSL22 - 040	\$1,556
PSL22 - 146	\$1,838	PSL22 - 246	\$1,838	PSL22 - 346	\$2,427	PSL22 - 046	\$1,617
PSL22 - 152	\$2,357	PSL22 - 252	\$2,357	PSL22 - 352	\$3,110	PSL22 - 052	\$2,135
PSL22 - 158	\$2,628	PSL22 - 258	\$2,628	PSL22 - 358	\$3,381	PSL22 - 058	\$2,407
12" tall (+ MB) x 22 1/2" deep		12" tall (+ MB) x 22 1/2" deep		12" tall (+ MB) x 22 1/2" deep		12" tall x 22 1/2" deep	

ISLAND PSLI - 1 (400cfm)		ISLAND PSLI - 2 (600cfm)		ISLAND PSLI - 3 (1200cfm)		ISLAND PSLI - 0 (NO BLOWER)	
Model #	400 CFM	Model #	600 CFM	Model #	1200 CFM	Model #	0 CFM
PSLI - 128	\$2,433	PSLI - 228	\$2,433	PSLI - 328	N/A	PSLI-028	\$2,153
PSLI - 134	\$2,465	PSLI - 234	\$2,465	PSLI - 334	N/A	PSLI-034	\$2,213
PSLI - 140	\$2,498	PSLI - 240	\$2,498	PSLI - 340	\$2,847	PSLI - 040	\$2,276
PSLI - 146	\$2,566	PSLI - 246	\$2,566	PSLI - 346	\$3,022	PSLI - 046	\$2,345
PSLI - 152	\$3,117	PSLI - 252	\$3,117	PSLI - 352	\$3,542	PSLI - 052	\$2,895
PSLI - 158	\$3,408	PSLI - 258	\$3,408	PSLI - 358	\$3,814	PSLI - 058	\$3,187
12" tall (+ MB) x 25 1/2" deep		12" tall (+ MB) x 25 1/2" deep		12" tall (+ MB) x 25 1/2" deep		12" tall x 25 1/2" deep	

4. EXTERNAL MOTOR OPTIONS

Item #	Description:	Each
EMIL800	Inline blower only (8" duct)	\$1,005
EMIL800K	Inliner blower with duct accessories.	\$1,350
EMIL1200	Inline blower only (10" duct)	\$1,265
EMIL1200K	Inliner blower with duct accessories.	\$1,770
EMIL800 = 836cfm EMIL1200 = 1266cfm		
EM1400 EC	External 1400cfm (10" duct)	\$1,400

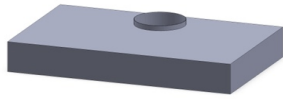
DUCT ACCESSORIES

Item #	Description:	Each
S8	Duct Silencer 8"	\$252
S10	Duct Silencer 10"	\$390
BD8	inline Damper 8"	\$48
BD10	inline Damper 10"	\$65
MC8	Mounting Clamps 8"Duct	\$45
MC10	Mounting Clamps 10"Duct	\$50

FREIGHT

Zone Prices
The freight charge is determined by what zone your state is in. Please refer to the zone map for the freight charge to your area.
Oversized liners are subject to additional pricing

Professional Series Box Liner Information



Baffle Filters Included	U.L. Listed for Indoor & Outdoor use
Top Vent Standard - Duct Collar Included	Custom Sizes Available
Variable Fan and Light Switch (5amp)	Mounting Height 30" - 36" above cook top
3000K LED Lighting	

PSBL - 1 (400cfm)		PSBL - 2 (600cfm)		PSBL - 3 (1200cfm)		PSBL - 0 (NO BLOWER)	
Model #	400 CFM	Model #	600 CFM	Model #	1200 CFM	Model #	0 CFM
PSBL - 128	\$1,644	PSBL - 228	\$1,644	PSBL - 328	N/A	PSBL - 028	\$1,423
PSBL - 134	\$1,714	PSBL - 234	\$1,714	PSBL - 334	N/A	PSBL - 034	\$1,493
PSBL - 140	\$1,778	PSBL - 240	\$1,778	PSBL - 340	\$2,301	PSBL - 040	\$1,556
PSBL - 146	\$1,838	PSBL - 246	\$1,838	PSBL - 346	\$2,427	PSBL - 046	\$1,617
PSBL - 152	\$2,357	PSBL - 252	\$2,357	PSBL - 352	\$3,110	PSBL - 052	\$2,135
PSBL - 158	\$2,628	PSBL - 258	\$2,628	PSBL - 358	\$3,381	PSBL - 058	\$2,407
6" tall (+ MB) x 22 1/2" deep		6" tall (+ MB) x 22 1/2" deep		6" tall (+ MB) x 22 1/2" deep		6" tall x 22 1/2" deep	

4. EXTERNAL MOTOR OPTIONS

Item #	Description:	Each
EMIL800	Inline blower only (8" duct)	\$1,005
EMIL800K	Inliner blower with duct accessories.	\$1,350
EMIL1200	Inline blower only (10" duct)	\$1,265
EMIL1200K	Inliner blower with duct accessories.	\$1,770
EMIL800 = 836cfm EMIL1200 = 1266cfm		
EM1400 EC	External 1400cfm (10" duct)	\$1,400

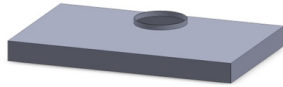
DUCT ACCESSORIES

Item #	Description:	Each
S8	Duct Silencer 8"	\$252
S10	Duct Silencer 10"	\$390
BD8	inline Damper 8"	\$48
BD10	inline Damper 10"	\$65
MC8	Mounting Clamps 8"Duct	\$45
MC10	Mounting Clamps 10"Duct	\$50

FREIGHT

	Zone Prices
	The freight charge is determined by what zone your state is in. Please refer to the zone map for the freight charge to your area.
	Oversized liners are subject to additional pricing

Professional Mesh Liner Information



Mesh Filters Included	U.L. Listed for Indoor & Outdoor use
Top Vent Standard - Duct Collar Included	Custom Sizes Available
Variable Fan and Light Switch (5amp)	Mounting Height 30" - 36" above cook top
3000K LED Lighting	

WALL MOUNT - 18 1/8" DEPTH

Model #	Width	Price
PML18-28	28 3/8"	\$548
PML18-34	34 3/8"	\$637
PML18-40	40 3/8"	\$674
PML18-46	46 3/8"	\$717
PML18-52	52 3/8"	\$978
PML18-58	58 3/8"	\$1,085
4" tall x 18 1/8" deep		

WALL MOUNT - 22 1/2" DEPTH

Model #	Width	Price
PML22-28	28 3/8"	\$895
PML22-34	34 3/8"	\$941
PML22-40	40 3/8"	\$987
PML22-46	46 3/8"	\$1,034
PML22-52	52 3/8"	\$1,295
PML22-58	58 3/8"	\$1,401
4" tall x 22 1/2" deep		

ISLAND MOUNT - 22 1/2" DEPTH

Model #	Width	Price
PMLI22-28	28 3/8"	\$1,292
PMLI22-34	34 3/8"	\$1,338
PMLI22-40	40 3/8"	\$1,383
PMLI22-46	46 3/8"	\$1,430
PMLI22-52	52 3/8"	\$1,732
PMLI22-58	58 3/8"	\$1,838
4" tall x 22 1/2" deep		

INTERNAL MOTOR OPTIONS

Item #	Description:	Each
	No Blower	\$0
LP8*	8" Round Top Collar Plate	\$48
LP10*	10" Round Top Collar Plate	\$48
M400	Internal 400cfm (7" duct)	\$600
M600	Internal 600cfm (8" duct)	\$620
M1200	Internal 1000cfm (10" duct)	\$1,200
*	No Charge if purchase with External	

4. EXTERNAL MOTOR OPTIONS

Item #	Description:	Each
EMIL800	Inline blower only (8"duct)	\$1,005
EMIL800K	Inliner blower with duct accessories.	\$1,350
EMIL1200	Inline blower only (10" duct)	\$1,265
EMIL1200K	Inliner blower with duct accessories.	\$1,770
EMIL800 = 836cfm EMIL1200 = 1266cfm		
EM1400 EC	External 1400cfm (10" duct)	\$1,400

DUCT ACCESSORIES

Item #	Description:	Each
S8	Duct Silencer 8"	\$252
S10	Duct Silencer 10"	\$390
BD8	inline Damper 8"	\$48
BD10	inline Damper 10"	\$65
MC8	Mounting Clamps 8"Duct	\$45
MC10	Mounting Clamps 10"Duct	\$50

FREIGHT

Item #	Zone Prices
	The freight charge is determined by what zone your state is in. Please refer to the zone map for the freight charge to your area.
	Oversized liners are subject to additional pricing



Modern-Aire Ventilating • 7319 Lankershim Blvd. • North Hollywood, CA 91605
Phone: 818.765.9870 • Toll Free: 866.731.2007 • Fax: 818.765.4916
Website: www.modernaire.com